

**Rabbit Anti-CTGF Polyclonal Antibody**  
**Purified Rabbit Polyclonal Antibody (Pab)**  
**Catalog # AP52180****Specification**

---

**Rabbit Anti-CTGF Polyclonal Antibody - Product Information**

Application	WB, IHC-P
Primary Accession	<a href="#">P29279</a>
Reactivity	Human, Mouse, Rat
Host	Rabbit
Clonality	Polyclonal

**Rabbit Anti-CTGF Polyclonal Antibody - Additional Information****Gene ID** 1490**Other Names**

CCN2; NOV2; HCS24; IGFBP8; Connective tissue growth factor; CCN family member 2; Hypertrophic chondrocyte-specific protein 24; Insulin-like growth factor-binding protein 8; IBP-8; IGF-binding protein 8; IGFBP-8; CTGF

**Dilution**

<span class = "dilution\_WB">WB~1:100~1:500</span><br \><span class = "dilution\_IHC-P">IHC-P~1:100~1:500</span>

**Format**

0.01M TBS(pH7.4), 0.09% (W/V) sodium azide and 50% Glyce

**Storage**

Store at -20 °C for one year. Avoid repeated freeze/thaw cycles. When reconstituted in sterile pH 7.4 0.01M PBS or diluent of antibody the antibody is stable for at least two weeks at 2-4 °C.

**Rabbit Anti-CTGF Polyclonal Antibody - Protein Information****Name** CCN2 ([HGNC:2500](#))**Function**

Major connective tissue mitogen secreted by vascular endothelial cells. Promotes proliferation and differentiation of chondrocytes. Mediates heparin- and divalent cation-dependent cell adhesion in many cell types including fibroblasts, myofibroblasts, endothelial and epithelial cells. Enhances fibroblast growth factor- induced DNA synthesis.

**Cellular Location**

Secreted, extracellular space, extracellular matrix {ECO:0000250|UniProtKB:P29268}. Secreted {ECO:0000250|UniProtKB:P29268}

**Tissue Location**

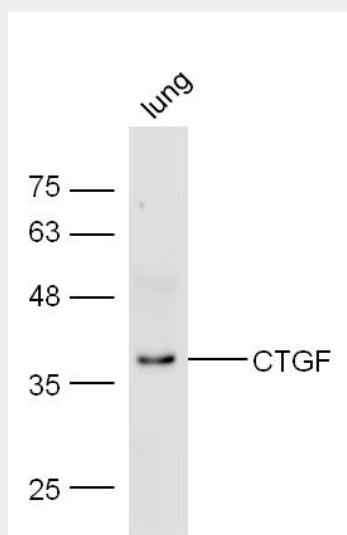
Expressed in bone marrow and thymic cells. Also expressed one of two Wilms tumors tested.

## Rabbit Anti-CTGF Polyclonal Antibody - Protocols

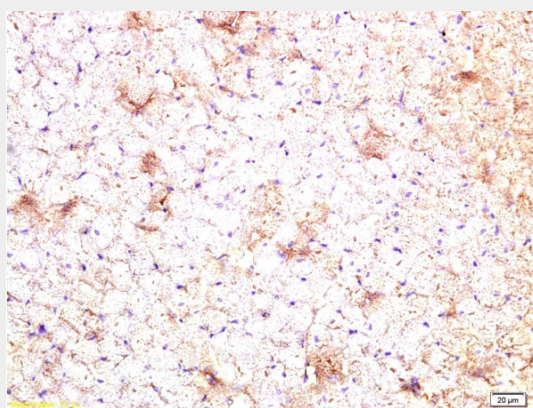
Provided below are standard protocols that you may find useful for product applications.

- [Western Blot](#)
- [Blocking Peptides](#)
- [Dot Blot](#)
- [Immunohistochemistry](#)
- [Immunofluorescence](#)
- [Immunoprecipitation](#)
- [Flow Cytometry](#)
- [Cell Culture](#)

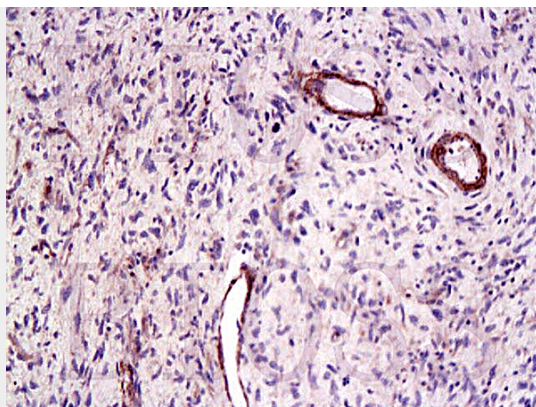
## Rabbit Anti-CTGF Polyclonal Antibody - Images



Mouse lung lysate probed with Anti-CTGF Polyclonal Antibody (AP52180) at 1:300 overnight in 4°C. Followed by conjugation to the secondary antibody at 1:5000 90min in 37°C.



Formalin-fixed and paraffin embedded rat heart tissue labeled Anti-CTGF Polyclonal Antibody, Unconjugated (AP52180) at 1:200, followed by conjugation to the secondary antibody and DAB staining



Formalin-fixed and paraffin embedded human laryngeal cancer labeled Anti-CTGF Polyclonal Antibody, Unconjugated AP52180 at 1:200, followed by conjugation to the secondary antibody and DAB staining

#### **Rabbit Anti-CTGF Polyclonal Antibody - Background**

Major connective tissue mitogen secreted by vascular endothelial cells. Promotes proliferation and differentiation of chondrocytes. Mediates heparin- and divalent cation-dependent cell adhesion in many cell types including fibroblasts, myofibroblasts, endothelial and epithelial cells. Enhances fibroblast growth factor-induced DNA synthesis.