

**FBXL15 Antibody (C-term)**  
**Affinity Purified Rabbit Polyclonal Antibody (Pab)**  
**Catalog # AP5221B****Specification**

---

**FBXL15 Antibody (C-term) - Product Information**

Application	WB, IHC-P,E
Primary Accession	<a href="#">Q9H469</a>
Other Accession	<a href="#">D4ABB4</a> , <a href="#">Q91W61</a> , <a href="#">E1BNS0</a>
Reactivity	Human
Predicted	Bovine, Mouse, Rat
Host	Rabbit
Clonality	Polyclonal
Isotype	Rabbit IgG
Calculated MW	32998
Antigen Region	252-280

**FBXL15 Antibody (C-term) - Additional Information****Gene ID** 79176**Other Names**

F-box/LRR-repeat protein 15, F-box only protein 37, FBXL15, FBXO37

**Target/Specificity**

This FBXL15 antibody is generated from rabbits immunized with a KLH conjugated synthetic peptide between 252-280 amino acids from the C-terminal region of human FBXL15.

**Dilution**

WB~~1:1000

IHC-P~~1:50~100

**Format**

Purified polyclonal antibody supplied in PBS with 0.09% (W/V) sodium azide. This antibody is purified through a protein A column, followed by peptide affinity purification.

**Storage**

Maintain refrigerated at 2-8°C for up to 2 weeks. For long term storage store at -20°C in small aliquots to prevent freeze-thaw cycles.

**Precautions**

FBXL15 Antibody (C-term) is for research use only and not for use in diagnostic or therapeutic procedures.

**FBXL15 Antibody (C-term) - Protein Information****Name** FBXL15

**Synonyms** FBXO37

**Function** Substrate recognition component of a SCF (SKP1-CUL1-F-box protein) E3 ubiquitin-protein ligase complex which mediates the ubiquitination and subsequent proteasomal degradation of SMURF1, thereby acting as a positive regulator of the BMP signaling pathway. Required for dorsal/ventral pattern formation and bone mass maintenance. Also mediates ubiquitination of SMURF2 and WWP2.

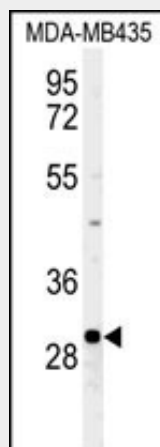
**Cellular Location**

Cytoplasm.

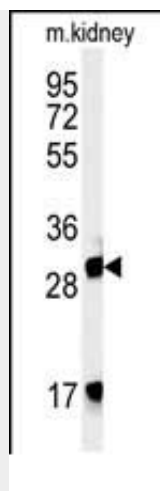
**FBXL15 Antibody (C-term) - Protocols**

Provided below are standard protocols that you may find useful for product applications.

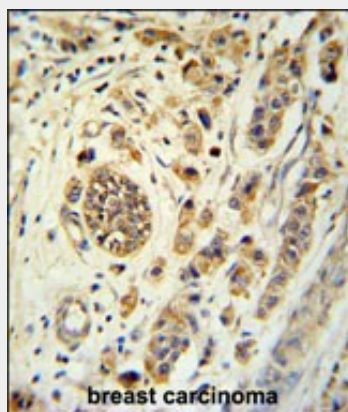
- [Western Blot](#)
- [Blocking Peptides](#)
- [Dot Blot](#)
- [Immunohistochemistry](#)
- [Immunofluorescence](#)
- [Immunoprecipitation](#)
- [Flow Cytometry](#)
- [Cell Culture](#)

**FBXL15 Antibody (C-term) - Images**

Western blot analysis of FBXL15 Antibody (C-term) (RB26324) in MDA-MB435 cell line lysates (35ug/lane).FBXL15 (arrow) was detected using the purified Pab.



Western blot analysis of FBXL15 Antibody (C-term) (Cat. #AP5221b) in mouse kidney tissue lysates (35ug/lane).FBXL15 (arrow) was detected using the purified Pab.



FBXL15 Antibody (C-term) (Cat. #AP5221b) immunohistochemistry analysis in formalin fixed and paraffin embedded human breast carcinoma followed by peroxidase conjugation of the secondary antibody and DAB staining. This data demonstrates the use of the FBXL15 Antibody (C-term) for immunohistochemistry. Clinical relevance has not been evaluated.

#### **FBXL15 Antibody (C-term) - Background**

FBXL15 is probably recognizes and binds to some phosphorylated proteins and promotes their ubiquitination and degradation.

#### **FBXL15 Antibody (C-term) - References**

Deloukas, P., et al. Nature 429(6990):375-381(2004)