

**FYTD1 Antibody (N-term)**  
**Affinity Purified Rabbit Polyclonal Antibody (Pab)**  
**Catalog # AP5223a**

**Specification**

---

**FYTD1 Antibody (N-term) - Product Information**

Application	WB, IHC-P,E
Primary Accession	<a href="#">O96QD9</a>
Other Accession	<a href="#">O91Z49</a> , <a href="#">O17OU6</a>
Reactivity	Human, Mouse
Predicted	Bovine
Host	Rabbit
Clonality	Polyclonal
Isotype	Rabbit IgG
Calculated MW	35818
Antigen Region	26-54

**FYTD1 Antibody (N-term) - Additional Information**

**Gene ID** 84248

**Other Names**

UAP56-interacting factor, Forty-two-three domain-containing protein 1, Protein 40-2-3, FYTTD1, UIF

**Target/Specificity**

This FYTD1 antibody is generated from rabbits immunized with a KLH conjugated synthetic peptide between 26-54 amino acids from the N-terminal region of human FYTD1.

**Dilution**

WB~~1:1000  
IHC-P~~1:50~100

**Format**

Purified polyclonal antibody supplied in PBS with 0.09% (W/V) sodium azide. This antibody is purified through a protein A column, followed by peptide affinity purification.

**Storage**

Maintain refrigerated at 2-8°C for up to 2 weeks. For long term storage store at -20°C in small aliquots to prevent freeze-thaw cycles.

**Precautions**

FYTD1 Antibody (N-term) is for research use only and not for use in diagnostic or therapeutic procedures.

**FYTD1 Antibody (N-term) - Protein Information**

**Name** FYTTD1

## Synonyms UIF

**Function** Required for mRNA export from the nucleus to the cytoplasm. Acts as an adapter that uses the DDX39B/UAP56-NFX1 pathway to ensure efficient mRNA export and delivering to the nuclear pore. Associates with spliced and unspliced mRNAs simultaneously with ALYREF/THOC4.

## Cellular Location

Nucleus, nucleoplasm. Nucleus speckle

## Tissue Location

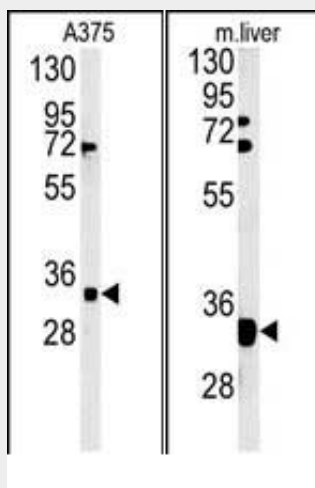
Expressed in a wide variety of cancer types.

## FYTD1 Antibody (N-term) - Protocols

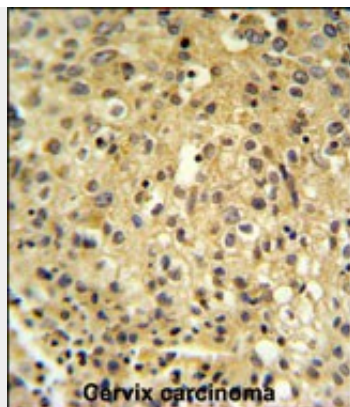
Provided below are standard protocols that you may find useful for product applications.

- [Western Blot](#)
- [Blocking Peptides](#)
- [Dot Blot](#)
- [Immunohistochemistry](#)
- [Immunofluorescence](#)
- [Immunoprecipitation](#)
- [Flow Cytometry](#)
- [Cell Culture](#)

## FYTD1 Antibody (N-term) - Images



(LEFT)Western blot analysis of FYTD1 Antibody (N-term) (Cat. #AP5223a) in A375 cell line lysates (35ug/lane).FYTD1 (arrow) was detected using the purified Pab.(RIGHT)Western blot analysis of FYTD1 Antibody (N-term) (Cat. #AP5223a) in mouse liver tissue lysates (35ug/lane).FYTD1 (arrow) was detected using the purified Pab.



FYTD1 Antibody (N-term) (Cat. #AP5223a) IHC analysis in formalin fixed and paraffin embedded human cervix carcinoma followed by peroxidase conjugation of the secondary antibody and DAB staining. This data demonstrates the use of the FYTD1 Antibody (N-term) for immunohistochemistry. Clinical relevance has not been evaluated.

#### **FYTD1 Antibody (N-term) - Background**

FYTD1 required for mRNA export from the nucleus to the cytoplasm. This protein acts as an adapter that uses the BAT1/UAP56-NFX1 pathway to ensure efficient mRNA export and delivering to the nuclear pore. FYTD1 associates with spliced and unspliced mRNAs simultaneously with THOC4.

#### **FYTD1 Antibody (N-term) - References**

Hautbergue, G.M., et al. Curr. Biol. 19(22):1918-1924(2009)  
Pope, S.N., et al. J. Steroid Biochem. Mol. Biol. 94 (1-3), 203-208 (2005)