

Rabbit Anti-MCL1 Polyclonal Antibody
Purified Rabbit Polyclonal Antibody (Pab)
Catalog # AP52249**Specification**

Rabbit Anti-MCL1 Polyclonal Antibody - Product Information

Application	WB
Primary Accession	Q07820
Reactivity	Human, Mouse, Rat
Host	Rabbit
Clonality	Polyclonal
Calculated MW	37337

Rabbit Anti-MCL1 Polyclonal Antibody - Additional Information**Gene ID** 4170**Other Names**

TM; EAT; MCL1L; MCL1S; Mcl-1; BCL2L3; MCL1-ES; bcl2-L-3; mcl1/EAT; Induced myeloid leukemia cell differentiation protein Mcl-1; Bcl-2-like protein 3; Bcl-2-related protein EAT/mcl1; MCL1

Dilution

WB~~1:100~1:500

Format

0.01M TBS(pH7.4), 0.09% (W/V) sodium azide and 50% Glyce

Storage

Store at -20 °C for one year. Avoid repeated freeze/thaw cycles. When reconstituted in sterile pH 7.4 0.01M PBS or diluent of antibody the antibody is stable for at least two weeks at 2-4 °C.

Rabbit Anti-MCL1 Polyclonal Antibody - Protein Information**Name** MCL1**Synonyms** BCL2L3**Function**

Involved in the regulation of apoptosis versus cell survival, and in the maintenance of viability but not of proliferation. Mediates its effects by interactions with a number of other regulators of apoptosis. Isoform 1 inhibits apoptosis. Isoform 2 promotes apoptosis.

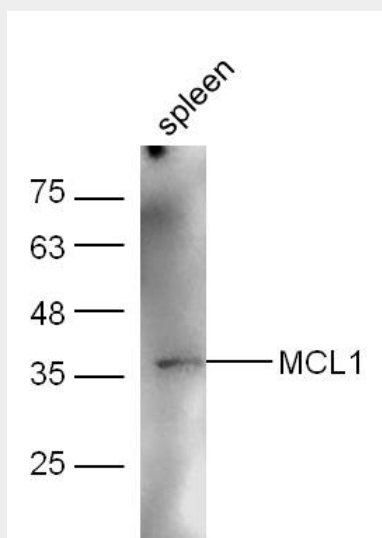
Cellular LocationMembrane; Single-pass membrane protein. Cytoplasm. Mitochondrion. Nucleus, nucleoplasm
Note=Cytoplasmic, associated with mitochondria

Rabbit Anti-MCL1 Polyclonal Antibody - Protocols

Provided below are standard protocols that you may find useful for product applications.

- [Western Blot](#)
- [Blocking Peptides](#)
- [Dot Blot](#)
- [Immunohistochemistry](#)
- [Immunofluorescence](#)
- [Immunoprecipitation](#)
- [Flow Cytometry](#)
- [Cell Culture](#)

Rabbit Anti-MCL1 Polyclonal Antibody - Images



Mouse spleen lysates probed with Rabbit Anti-MCL1 Polyclonal Antibody, Unconjugated (AP52249) at 1:300 overnight at 4°C. Followed by conjugation to secondary antibody at 1:5000 for 90 min at 37°C.

Rabbit Anti-MCL1 Polyclonal Antibody - Background

Involved in the regulation of apoptosis versus cell survival, and in the maintenance of viability but not of proliferation. Mediates its effects by interactions with a number of other regulators of apoptosis. Isoform 1 inhibits apoptosis. Isoform 2 promotes apoptosis.