

Rabbit Anti-beta III Tubulin Polyclonal Antibody
Purified Rabbit Polyclonal Antibody (Pab)
Catalog # AP52263**Specification****Rabbit Anti-beta III Tubulin Polyclonal Antibody - Product Information**

Application	WB, IHC-P
Primary Accession	Q13509
Reactivity	Human, Mouse, Rat
Host	Rabbit
Clonality	Polyclonal
Calculated MW	50433

Rabbit Anti-beta III Tubulin Polyclonal Antibody - Additional Information**Gene ID** 10381**Other Names**

CDCBM; FEOM3; TUBB4; CDCBM1; CFEOM3; beta-4; CFEOM3A; Tubulin beta-3 chain; Tubulin beta-4 chain; Tubulin beta-III; TUBB3

DilutionWB~1:100~1:500<br \>IHC-P~1:100~1:500**Format**

0.01M TBS(pH7.4), 0.09% (W/V) sodium azide and 50% Glyce

Storage

Store at -20 °C for one year. Avoid repeated freeze/thaw cycles. When reconstituted in sterile pH 7.4 0.01M PBS or diluent of antibody the antibody is stable for at least two weeks at 2-4 °C.

Rabbit Anti-beta III Tubulin Polyclonal Antibody - Protein Information**Name** TUBB3**Synonyms** TUBB4**Function**

Tubulin is the major constituent of microtubules, a cylinder consisting of laterally associated linear protofilaments composed of alpha- and beta-tubulin heterodimers (PubMed:34996871). Microtubules grow by the addition of GTP-tubulin dimers to the microtubule end, where a stabilizing cap forms (PubMed:34996871). Below the cap, tubulin dimers are in GDP-bound state, owing to GTPase activity of alpha- tubulin (PubMed:34996871). TUBB3 plays a critical role in proper axon guidance and maintenance (PubMed:20074521). Binding of

NTN1/Netrin-1 to its receptor UNC5C might cause dissociation of UNC5C from polymerized TUBB3 in microtubules and thereby lead to increased microtubule dynamics and axon repulsion (PubMed:28483977). Plays a role in dorsal root ganglion axon projection towards the spinal cord (PubMed:28483977).

Cellular Location

Cytoplasm, cytoskeleton. Cell projection, growth cone {ECO:0000250|UniProtKB:Q9ERD7}. Cell projection, lamellipodium {ECO:0000250|UniProtKB:Q9ERD7}. Cell projection, filopodium {ECO:0000250|UniProtKB:Q9ERD7}

Tissue Location

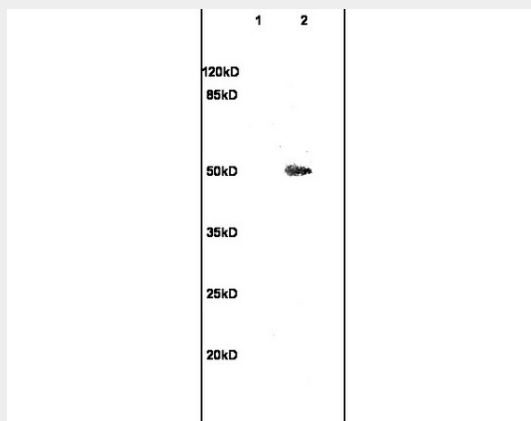
Expression is primarily restricted to central and peripheral nervous system. Greatly increased expression in most cancerous tissues.

Rabbit Anti-beta III Tubulin Polyclonal Antibody - Protocols

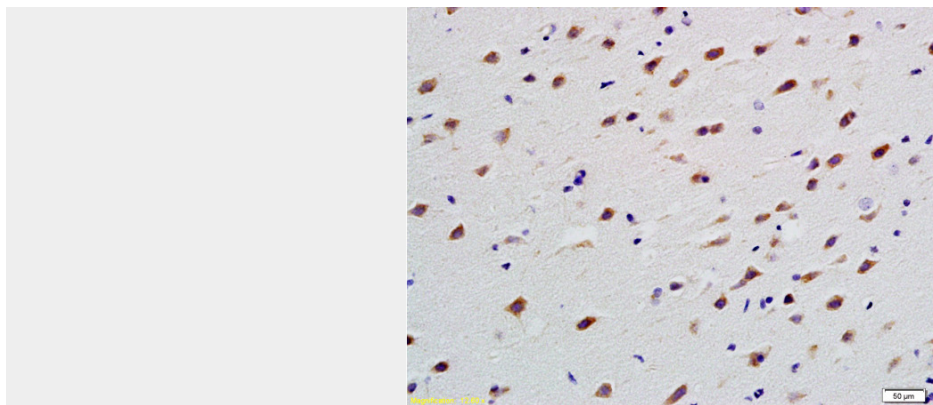
Provided below are standard protocols that you may find useful for product applications.

- [Western Blot](#)
- [Blocking Peptides](#)
- [Dot Blot](#)
- [Immunohistochemistry](#)
- [Immunofluorescence](#)
- [Immunoprecipitation](#)
- [Flow Cytometry](#)
- [Cell Culture](#)

Rabbit Anti-beta III Tubulin Polyclonal Antibody - Images



L1 rat brain lysates L2 rat kidney lysates probed with Anti TUBB3 Polyclonal Antibody, Unconjugated (AP52263) at 1:200 overnight at 4°C. Followed by conjugation to secondary antibody at 1:3000 for 90 min at 37°C. Predicted band 50kD. Observed band size:50kD.



Formalin-fixed and paraffin embedded rat brain labeled with Anti-TUBB3 Polyclonal Antibody, Unconjugated (AP52263) at 1:200 followed by conjugation to the secondary antibody and DAB staining

Rabbit Anti-beta III Tubulin Polyclonal Antibody - Background

Tubulin is the major constituent of microtubules. It binds two moles of GTP, one at an exchangeable site on the beta chain and one at a non-exchangeable site on the alpha chain. TUBB3 plays a critical role in proper axon guidance and maintenance.

Rabbit Anti-beta III Tubulin Polyclonal Antibody - Citations

- [Identification of molecular markers for superior quantitative traits in a novel sea cucumber strain by comparative microRNA-mRNA expression profiling](#)