

**Rabbit Anti-CD34 Polyclonal Antibody**  
**Purified Rabbit Polyclonal Antibody (Pab)**  
**Catalog # AP52283****Specification**

---

**Rabbit Anti-CD34 Polyclonal Antibody - Product Information**

Application	IF, WB, IHC-P
Primary Accession	<a href="#">Q64314</a>
Reactivity	Human, Mouse, Rat
Host	Rabbit
Clonality	Polyclonal

**Rabbit Anti-CD34 Polyclonal Antibody - Additional Information****Gene ID** 12490**Other Names**

AU496; Hematopoietic progenitor cell antigen CD34; CD34

**Dilution**

<span class = "dilution\_IF">IF~1:100~1:200</span><br \><span class = "dilution\_WB">WB~1:100~1:500</span><br \><span class = "dilution\_IHC-P">IHC-P~1:100~1:500</span>

**Format**

0.01M TBS(pH7.4), 0.09% (W/V) sodium azide and 50% Glyce

**Storage**

Store at -20 °C for one year. Avoid repeated freeze/thaw cycles. When reconstituted in sterile pH 7.4 0.01M PBS or diluent of antibody the antibody is stable for at least two weeks at 2-4 °C.

**Rabbit Anti-CD34 Polyclonal Antibody - Protein Information****Name** Cd34**Function**

Possible adhesion molecule with a role in early hematopoiesis by mediating the attachment of stem cells to the bone marrow extracellular matrix or directly to stromal cells. Could act as a scaffold for the attachment of lineage specific glycans, allowing stem cells to bind to lectins expressed by stromal cells or other marrow components. Presents carbohydrate ligands to selectins (By similarity).

**Cellular Location**

Membrane; Single-pass type I membrane protein.

**Tissue Location**

Expressed in the kidney where it is detected in the thin limb of Henle's loop (at protein level) (PubMed:31605441). Highly expressed in hematopoietic progenitor cell lines, brain and testis, and

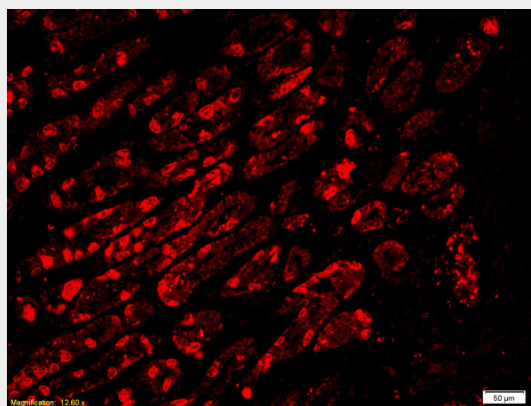
moderately in the thymus, spleen, and bone marrow, but not in adult liver (PubMed:1709048).

### Rabbit Anti-CD34 Polyclonal Antibody - Protocols

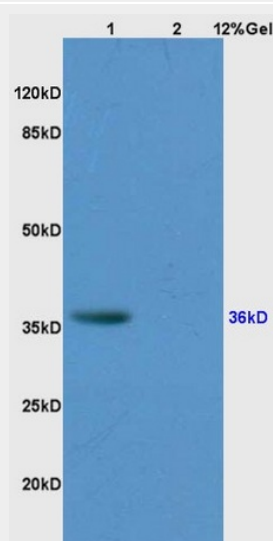
Provided below are standard protocols that you may find useful for product applications.

- [Western Blot](#)
- [Blocking Peptides](#)
- [Dot Blot](#)
- [Immunohistochemistry](#)
- [Immunofluorescence](#)
- [Immunoprecipitation](#)
- [Flow Cytometry](#)
- [Cell Culture](#)

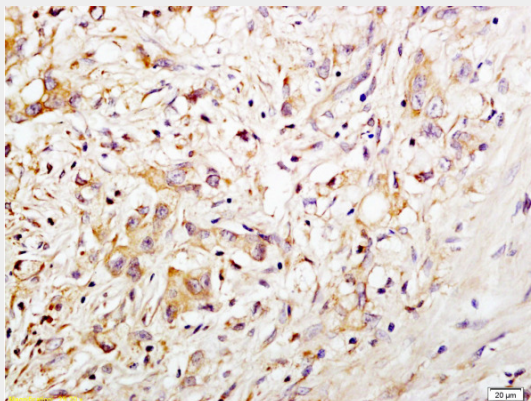
### Rabbit Anti-CD34 Polyclonal Antibody - Images



Formalin-fixed and paraffin embedded human gastric adenocarcinoma tissue labeled with Anti-CD34 Polyclonal Antibody, Unconjugated AP52283 at 1:200 followed by conjugation to the secondary antibody, Goat Anti-Rabbit IgG, Cy3 conjugated, and DAPI staining



Lane 1: human colon carcinoma Lane 2: rat kidney lysates probed with Anti CD34 Polyclonal Antibody, Unconjugated (AP52283) at 1:200 in 4°C. Followed by conjugation to secondary antibody at 1:3000 90min in 37°C. Predicted band 39kD. Observed band size: 39kD.



Formalin-fixed and paraffin embedded human gastric carcinoma tissue labeled with Anti-CD34 Polyclonal Antibody, Unconjugated(AP52283) at 1:200 followed by conjugation to the secondary antibody and DAB staining

#### **Rabbit Anti-CD34 Polyclonal Antibody - Background**

Possible adhesion molecule with a role in early hematopoiesis by mediating the attachment of stem cells to the bone marrow extracellular matrix or directly to stromal cells. Could act as a scaffold for the attachment of lineage specific glycans, allowing stem cells to bind to lectins expressed by stromal cells or other marrow components. Presents carbohydrate ligands to selectins (By similarity).

#### **Rabbit Anti-CD34 Polyclonal Antibody - Citations**

- [MicroRNA let-7c-5p promotes osteogenic differentiation of dental pulp stem cells by inhibiting lipopolysaccharide-induced inflammation via HMGA2/PI3K/Akt signal blockade.](#)