

Rabbit Anti-Smac/DIABLO Polyclonal Antibody
Purified Rabbit Polyclonal Antibody (Pab)
Catalog # AP52328**Specification**

Rabbit Anti-Smac/DIABLO Polyclonal Antibody - Product Information

| | |
|-------------------|------------------------|
| Application | WB, IHC-P, ICC |
| Primary Accession | Q9NR28 |
| Reactivity | Human, Mouse, Rat |
| Host | Rabbit |
| Clonality | Polyclonal |

Rabbit Anti-Smac/DIABLO Polyclonal Antibody - Additional Information**Gene ID** 56616**Other Names**

SMAC; DFNA64; Diablo homolog, mitochondrial; Direct IAP-binding protein with low pI; Second mitochondria-derived activator of caspase; DIABLO

Dilution

WB~~1:100~1:500<br \>IHC-P~~1:100~1:500<br \>ICC~~1:20~1:100>

Format

0.01M TBS(pH7.4), 0.09% (W/V) sodium azide and 50% Glyce

Storage

Store at -20 °C for one year. Avoid repeated freeze/thaw cycles. When reconstituted in sterile pH 7.4 0.01M PBS or diluent of antibody the antibody is stable for at least two weeks at 2-4 °C.

Rabbit Anti-Smac/DIABLO Polyclonal Antibody - Protein Information**Name** DIABLO ([HGNC:21528](#))**Function**

Promotes apoptosis by activating caspases in the cytochrome c/Apaf-1/caspase-9 pathway. Acts by opposing the inhibitory activity of inhibitor of apoptosis proteins (IAP). Inhibits the activity of BIRC6/bruce by inhibiting its binding to caspases.

Cellular Location

Mitochondrion. Cytoplasm, cytosol Note=Released into the cytosol in a PARL-dependent manner when cells undergo apoptosis.

Tissue Location

Ubiquitously expressed with highest expression in testis. Expression is also high in heart, liver, kidney, spleen, prostate and ovary. Low in brain, lung, thymus and peripheral blood leukocytes.

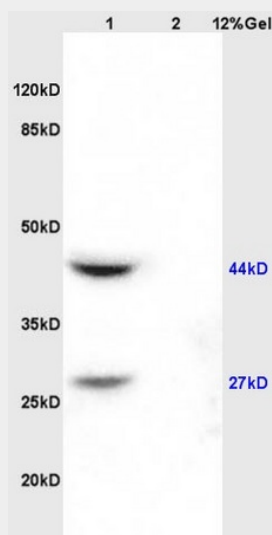
Isoform 3 is ubiquitously expressed

Rabbit Anti-Smac/DIABLO Polyclonal Antibody - Protocols

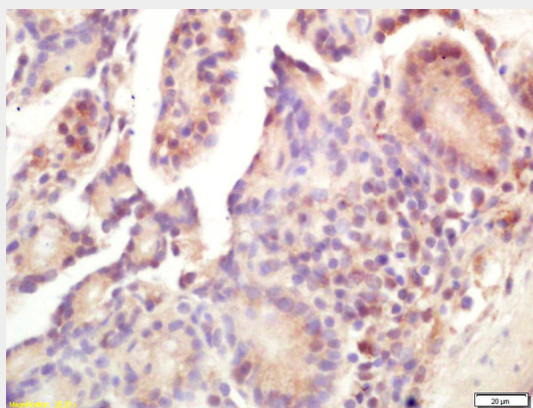
Provided below are standard protocols that you may find useful for product applications.

- [Western Blot](#)
- [Blocking Peptides](#)
- [Dot Blot](#)
- [Immunohistochemistry](#)
- [Immunofluorescence](#)
- [Immunoprecipitation](#)
- [Flow Cytometry](#)
- [Cell Culture](#)

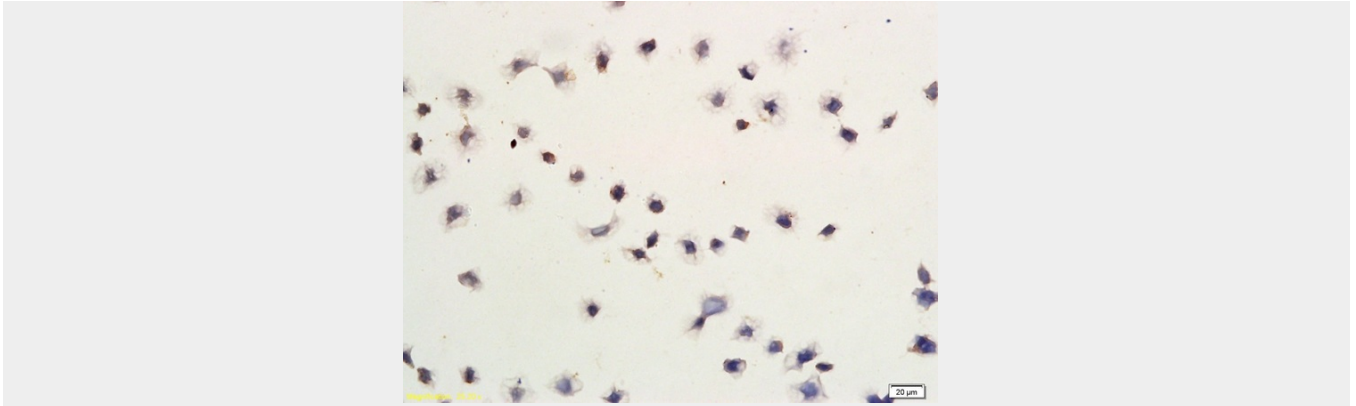
Rabbit Anti-Smac/DIABLO Polyclonal Antibody - Images



Lane 1: rat kidney lysates Lane 2: rat brain lysates probed with Anti AVPR2 Polyclonal Antibody, Unconjugated at 1:3000 90min in 37°C. Predicted band 40kD. Observed band size: 40kD



Formalin-fixed and paraffin embedded mouse intestine labeled with Rabbit Anti Smac/DIABLO Polyclonal Antibody, Unconjugated (AP52328) at 1:200 followed by conjugation to the secondary antibody and DAB staining



Gastric Cancer Cells labeled with Anti-Smac/DIABLO Polyclonal Antibody, Unconjugated AP52328 followed by conjugation to the secondary antibody

Rabbit Anti-Smac/DIABLO Polyclonal Antibody - Background

Promotes apoptosis by activating caspases in the cytochrome c/Apaf-1/caspase-9 pathway. Acts by opposing the inhibitory activity of inhibitor of apoptosis proteins (IAP). Inhibits the activity of BIRC6/bruce by inhibiting its binding to caspases. Isoform 3 attenuates the stability and apoptosis-inhibiting activity of XIAP/BIRC4 by promoting XIAP/BIRC4 ubiquitination and degradation through the ubiquitin-proteasome pathway. Isoform 3 also disrupts XIAP/BIRC4 interacting with processed caspase-9 and promotes caspase-3 activation. Isoform 1 is defective in the capacity to down-regulate the XIAP/BIRC4 abundance.