

**MFSD3 Antibody (Center)**  
**Affinity Purified Rabbit Polyclonal Antibody (Pab)**  
**Catalog # AP5245C****Specification**

---

**MFSD3 Antibody (Center) - Product Information**

Application	WB, IHC-P,E
Primary Accession	<a href="#">Q96ES6</a>
Reactivity	Human
Host	Rabbit
Clonality	Polyclonal
Isotype	Rabbit IgG
Calculated MW	42696
Antigen Region	174-202

**MFSD3 Antibody (Center) - Additional Information****Gene ID** 113655**Other Names**

Major facilitator superfamily domain-containing protein 3, MFSD3

**Target/Specificity**

This MFSD3 antibody is generated from rabbits immunized with a KLH conjugated synthetic peptide between 174-202 amino acids from the Central region of human MFSD3.

**Dilution**

WB~~1:1000

IHC-P~~1:50~100

**Format**

Purified polyclonal antibody supplied in PBS with 0.09% (W/V) sodium azide. This antibody is purified through a protein A column, followed by peptide affinity purification.

**Storage**

Maintain refrigerated at 2-8°C for up to 2 weeks. For long term storage store at -20°C in small aliquots to prevent freeze-thaw cycles.

**Precautions**

MFSD3 Antibody (Center) is for research use only and not for use in diagnostic or therapeutic procedures.

**MFSD3 Antibody (Center) - Protein Information****Name** MFSD3**Cellular Location**

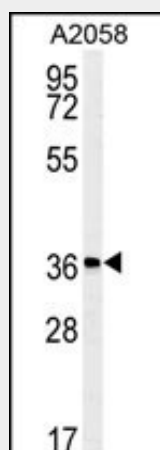
Membrane; Multi-pass membrane protein

### MFSD3 Antibody (Center) - Protocols

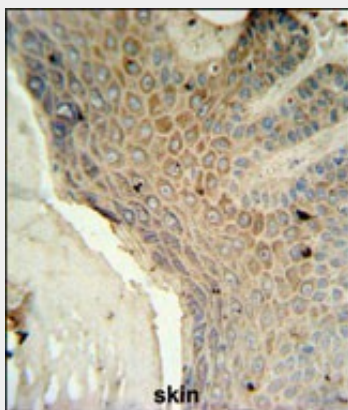
Provided below are standard protocols that you may find useful for product applications.

- [Western Blot](#)
- [Blocking Peptides](#)
- [Dot Blot](#)
- [Immunohistochemistry](#)
- [Immunofluorescence](#)
- [Immunoprecipitation](#)
- [Flow Cytometry](#)
- [Cell Culture](#)

### MFSD3 Antibody (Center) - Images



Western blot analysis of MFSD3 Antibody (Center) (Cat. #AP5245c) in A2058 cell line lysates (35ug/lane). MFSD3 (arrow) was detected using the purified Pab.



MFSD3 Antibody (Center) (Cat. #AP5245c) IHC analysis in formalin fixed and paraffin embedded human skin tissue followed by peroxidase conjugation of the secondary antibody and DAB staining. This data demonstrates the use of the MFSD3 Antibody (Center) for immunohistochemistry. Clinical relevance has not been evaluated.

### MFSD3 Antibody (Center) - Background

The function of this protein has not been specifically defined.

### **MFSD3 Antibody (Center) - References**

Gerhard, D.S., et al. Genome Res. 14 (10B), 2121-2127 (2004)