

Ezrin (Phospho-Tyr478) Antibody
Purified Rabbit Polyclonal Antibody (Pab)
Catalog # AP52487**Specification**

Ezrin (Phospho-Tyr478) Antibody - Product Information

Application	WB
Primary Accession	P15311
Reactivity	Human, Mouse
Host	Rabbit
Clonality	Polyclonal
Calculated MW	69413

Ezrin (Phospho-Tyr478) Antibody - Additional Information**Gene ID** 7430**Other Names**

Ezrin, Cytovillin, Villin-2, p81, EZR, VIL2

Dilution

WB~~1:1000

FormatRabbit IgG in phosphate buffered saline (without Mg²⁺ and Ca²⁺), pH 7.4, 150mM NaCl, 0.09% (W/V) sodium azide and 50% glycerol.**Storage Conditions**

-20°C

Ezrin (Phospho-Tyr478) Antibody - Protein Information**Name** EZR**Synonyms** VIL2**Function**

Probably involved in connections of major cytoskeletal structures to the plasma membrane. In epithelial cells, required for the formation of microvilli and membrane ruffles on the apical pole. Along with PLEKHG6, required for normal macropinocytosis.

Cellular Location

Apical cell membrane; Peripheral membrane protein; Cytoplasmic side. Cell projection. Cell projection, microvillus membrane; Peripheral membrane protein; Cytoplasmic side. Cell projection, ruffle membrane; Peripheral membrane protein; Cytoplasmic side. Cytoplasm, cell cortex. Cytoplasm, cytoskeleton. Cell projection, microvillus {ECO:0000250|UniProtKB:P26040}. Note=Localization to the apical membrane of parietal cells depends on the interaction with PALS1. Localizes to cell extensions and peripheral processes of astrocytes (By similarity). Microvillar

peripheral membrane protein (cytoplasmic side). {ECO:0000250|UniProtKB:P31977}

Tissue Location

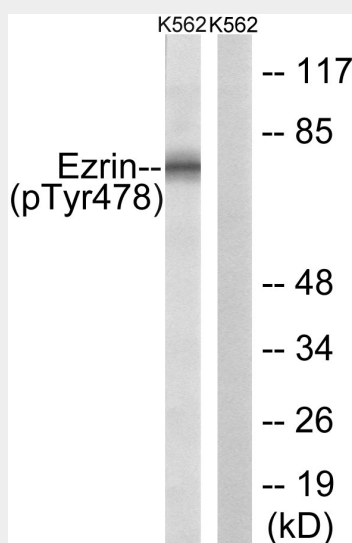
Expressed in cerebral cortex, basal ganglia, hippocampus, hypophysis, and optic nerve. Weakly expressed in brain stem and diencephalon. Stronger expression was detected in gray matter of frontal lobe compared to white matter (at protein level). Component of the microvilli of intestinal epithelial cells. Preferentially expressed in astrocytes of hippocampus, frontal cortex, thalamus, parahippocampal cortex, amygdala, insula, and corpus callosum. Not detected in neurons in most tissues studied

Ezrin (Phospho-Tyr478) Antibody - Protocols

Provided below are standard protocols that you may find useful for product applications.

- [Western Blot](#)
- [Blocking Peptides](#)
- [Dot Blot](#)
- [Immunohistochemistry](#)
- [Immunofluorescence](#)
- [Immunoprecipitation](#)
- [Flow Cytometry](#)
- [Cell Culture](#)

Ezrin (Phospho-Tyr478) Antibody - Images



Lane 1: The extracts from K562 cells treated with Na₃VO₄ (0.3nM, 40mins) using Ezrin (Phospho-Tyr478) antibody Lane 2: The extracts from K562 cells treated with Na₃VO₄ (0.3nM, 40mins) plus phosphopeptide using Ezrin (Phospho-Tyr478) antibody

Ezrin (Phospho-Tyr478) Antibody - Background

Probably involved in connections of major cytoskeletal structures to the plasma membrane. In epithelial cells, required for the formation of microvilli and membrane ruffles on the apical pole. Along with PLEKHG6, required for normal macropinocytosis.

Ezrin (Phospho-Tyr478) Antibody - References

Gould K.L.,et al.EMBO J. 8:4133-4142(1989).
Turunen O.,et al.J. Biol. Chem. 264:16727-16732(1989).
Bechtel S.,et al.BMC Genomics 8:399-399(2007).
Mungall A.J.,et al.Nature 425:805-811(2003).
Mural R.J.,et al.Submitted (SEP-2005) to the EMBL/GenBank/DDBJ databases.