

**RPA43 Antibody (C-term)**  
**Affinity Purified Rabbit Polyclonal Antibody (Pab)**  
**Catalog # AP5260b**

**Specification**

---

**RPA43 Antibody (C-term) - Product Information**

Application	WB, IHC-P,E
Primary Accession	<a href="#">Q3B726</a>
Reactivity	Human
Host	Rabbit
Clonality	Polyclonal
Isotype	Rabbit IgG
Calculated MW	37432
Antigen Region	298-326

**RPA43 Antibody (C-term) - Additional Information**

**Gene ID** 221830

**Other Names**

DNA-directed RNA polymerase I subunit RPA43, Twist neighbor protein, TWISTNB

**Target/Specificity**

This RPA43 antibody is generated from rabbits immunized with a KLH conjugated synthetic peptide between 298-326 amino acids from the C-terminal region of human RPA43.

**Dilution**

WB~~1:1000  
IHC-P~~1:50~100

**Format**

Purified polyclonal antibody supplied in PBS with 0.09% (W/V) sodium azide. This antibody is purified through a protein A column, followed by peptide affinity purification.

**Storage**

Maintain refrigerated at 2-8°C for up to 2 weeks. For long term storage store at -20°C in small aliquots to prevent freeze-thaw cycles.

**Precautions**

RPA43 Antibody (C-term) is for research use only and not for use in diagnostic or therapeutic procedures.

**RPA43 Antibody (C-term) - Protein Information**

**Name** POLR1F ([HGNC:18027](#))

**Function** Component of RNA polymerase I (Pol I), a DNA-dependent RNA polymerase which synthesizes ribosomal RNA precursors using the four ribonucleoside triphosphates as substrates.

Through its association with RRN3/TIF-IA may be involved in recruitment of Pol I to rDNA promoters.

**Cellular Location**

Nucleus, nucleolus.

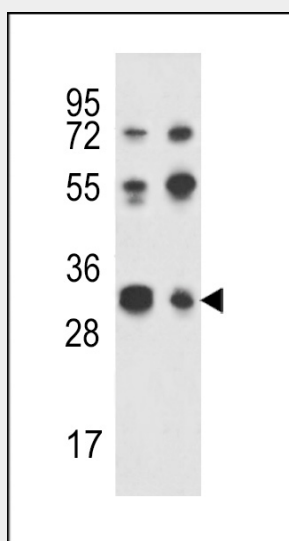
**Tissue Location**

Widely expressed. Expressed in all fetal and adult tissues tested, with highest expression in fetal lung, liver, and kidney, and low expression in all adult tissues

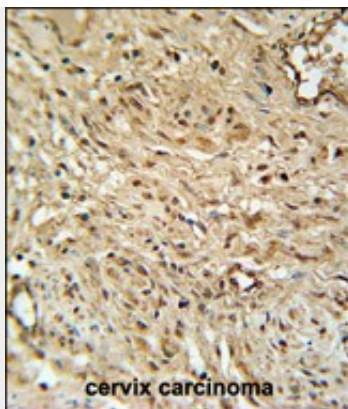
**RPA43 Antibody (C-term) - Protocols**

Provided below are standard protocols that you may find useful for product applications.

- [Western Blot](#)
- [Blocking Peptides](#)
- [Dot Blot](#)
- [Immunohistochemistry](#)
- [Immunofluorescence](#)
- [Immunoprecipitation](#)
- [Flow Cytometry](#)
- [Cell Culture](#)

**RPA43 Antibody (C-term) - Images**

Western blot analysis of RPA43 Antibody (C-term) (Cat. #AP5260b) in Jurkat, K562 cell line lysates (35ug/lane). RPA43 (arrow) was detected using the purified Pab.



RPA43 Antibody (C-term) (Cat. #AP5260b) immunohistochemistry analysis in formalin fixed and paraffin embedded human cervix carcinoma followed by peroxidase conjugation of the secondary antibody and DAB staining. This data demonstrates the use of the RPA43 Antibody (C-term) for immunohistochemistry. Clinical relevance has not been evaluated.

#### **RPA43 Antibody (C-term) - Background**

RPA43 is DNA-dependent RNA polymerase catalyzes the transcription of DNA into RNA using the four ribonucleoside triphosphates as substrates. It is component of RNA polymerase I which synthesizes ribosomal RNA precursors. Through its association with RRN3/TIF-IA may be involved in recruitment of Pol I to rDNA promoters.

#### **RPA43 Antibody (C-term) - References**

Olsen, J.V., et al. Cell 127(3):635-648(2006)  
Yuan, X., et al. EMBO Rep. 3(11):1082-1087(2002)  
Kosan, C., et al. Cytogenet. Genome Res. 97 (3-4), 167-170 (2002)