

**RPS26 Antibody (N-term)**  
**Affinity Purified Rabbit Polyclonal Antibody (Pab)**  
**Catalog # AP5261a****Specification**

---

**RPS26 Antibody (N-term) - Product Information**

Application	WB,E
Primary Accession	<a href="#">P62854</a>
Other Accession	<a href="#">P62856</a> , <a href="#">P49171</a> , <a href="#">P62855</a> , <a href="#">P61251</a> , <a href="#">Q56JV1</a> , <a href="#">Q6Q312</a> , <a href="#">G1TFE8</a>
Reactivity	Human
Predicted	Bovine, Monkey, Mouse, Pig, Rabbit, Rat, Sheep
Host	Rabbit
Clonality	Polyclonal
Isotype	Rabbit IgG
Calculated MW	13015
Antigen Region	1-30

**RPS26 Antibody (N-term) - Additional Information****Gene ID** 6231**Other Names**

40S ribosomal protein S26, RPS26

**Target/Specificity**

This RPS26 antibody is generated from rabbits immunized with a KLH conjugated synthetic peptide between 1-30 amino acids from the N-terminal region of human RPS26.

**Dilution**

WB~~1:1000

**Format**

Purified polyclonal antibody supplied in PBS with 0.09% (W/V) sodium azide. This antibody is purified through a protein A column, followed by peptide affinity purification.

**Storage**

Maintain refrigerated at 2-8°C for up to 2 weeks. For long term storage store at -20°C in small aliquots to prevent freeze-thaw cycles.

**Precautions**

RPS26 Antibody (N-term) is for research use only and not for use in diagnostic or therapeutic procedures.

**RPS26 Antibody (N-term) - Protein Information****Name** RPS26

**Function** Component of the small ribosomal subunit (PubMed:[23636399](#), PubMed:[25901680](#), PubMed:[25957688](#)). The ribosome is a large ribonucleoprotein complex responsible for the synthesis of proteins in the cell (PubMed:[23636399](#), PubMed:[25901680](#), PubMed:[25957688](#)).

#### Cellular Location

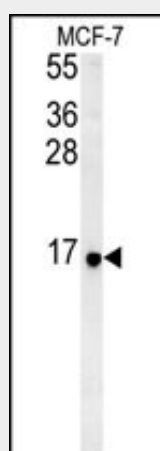
Cytoplasm, cytosol. Cytoplasm Rough endoplasmic reticulum {ECO:0000250|UniProtKB:P49171}  
Note=Detected on cytosolic polysomes (PubMed:25957688). Detected in ribosomes that are associated with the rough endoplasmic reticulum (By similarity).  
{ECO:0000250|UniProtKB:P49171, ECO:0000269|PubMed:25957688}

#### RPS26 Antibody (N-term) - Protocols

Provided below are standard protocols that you may find useful for product applications.

- [Western Blot](#)
- [Blocking Peptides](#)
- [Dot Blot](#)
- [Immunohistochemistry](#)
- [Immunofluorescence](#)
- [Immunoprecipitation](#)
- [Flow Cytometry](#)
- [Cell Culture](#)

#### RPS26 Antibody (N-term) - Images



RPS26 Antibody (N-term) Cat. #AP5261a western blot analysis in MCF-7 cell line lysates (35ug/lane). This demonstrates the RPS26 antibody detected the RPS26 protein (arrow).

#### RPS26 Antibody (N-term) - Background

Ribosomes, the organelles that catalyze protein synthesis, consist of a small 40S subunit and a large 60S subunit. Together these subunits are composed of 4 RNA species and approximately 80 structurally distinct proteins. This gene encodes a ribosomal protein that is a component of the 40S subunit. The protein belongs to the S26E family of ribosomal proteins. It is located in the cytoplasm. As is typical for genes encoding ribosomal proteins, there are multiple processed pseudogenes of this gene dispersed through the genome.

#### RPS26 Antibody (N-term) - References

Doherty, L., et al. Am. J. Hum. Genet. 86(2):222-228(2010)

Venkatesan, K., et al. Nat. Methods 6(1):83-90(2009)  
Nature 447(7145):661-678(2007)