

**TBLR1 Antibody**  
**Purified Mouse Monoclonal Antibody (Mab)**  
**Catalog # AP52686****Specification**

---

**TBLR1 Antibody - Product Information**

Application	WB, IHC, ICC
Primary Accession	<a href="#">Q9BZK7</a>
Reactivity	Human, Mouse
Host	Mouse
Clonality	Monoclonal
Isotype	IgG1
Calculated MW	60 KDa

**TBLR1 Antibody - Additional Information****Gene ID** 79718**Other Names**

C21;DC42;F box like/WD repeat containing protein TBL1XR1;F-box-like/WD repeat-containing protein TBL1XR1;FLJ12894;IRA1;Nuclear receptor corepressor/HDAC3 complex subunit;Nuclear receptor corepressor/HDAC3 complex subunit TBLR1;TBL1 related protein 1;TBL1-related protein 1;TBL1R\_HUMAN;TBL1XR1;Transducin (beta) like 1 X linked receptor 1;Transducin beta like 1X related protein 1;Transducin beta-like 1X-related protein 1.

**Dilution**

WB~~1:1000

IHC~~1:100

ICC~~1:200

**Format**

Purified mouse monoclonal in buffer containing 0.1M Tris-Glycine (pH 7.4, 150 mM NaCl) with 0.09% (W/V) sodium azide, 50%,glycerol

**Storage**

Store at -20 °C.Stable for 12 months from date of receipt

**TBLR1 Antibody - Protein Information****Name** TBL1XR1**Synonyms** IRA1, TBLR1**Function**

F-box-like protein involved in the recruitment of the ubiquitin/19S proteasome complex to nuclear receptor-regulated transcription units. Plays an essential role in transcription activation mediated by nuclear receptors. Probably acts as integral component of the N-Cor corepressor complex that mediates the recruitment of the 19S proteasome complex, leading to the subsequent proteasomal

degradation of N-Cor complex, thereby allowing cofactor exchange, and transcription activation.

**Cellular Location**

Nucleus.

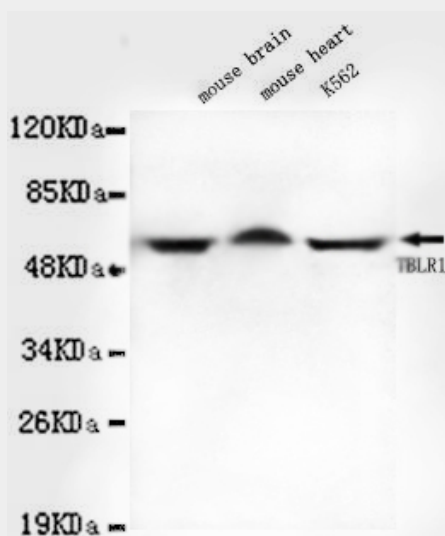
**Tissue Location**

Widely expressed including the pituitary, hypothalamus, white and brown adipose tissue, muscle and liver

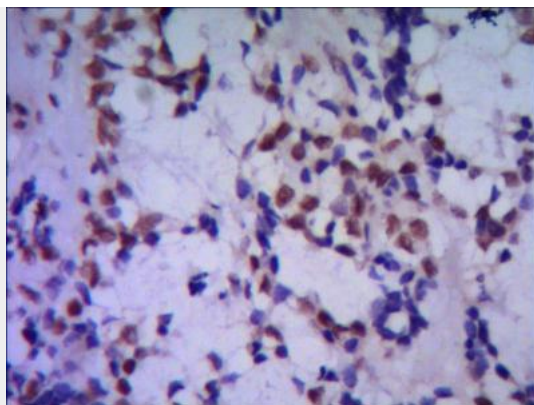
**TBLR1 Antibody - Protocols**

Provided below are standard protocols that you may find useful for product applications.

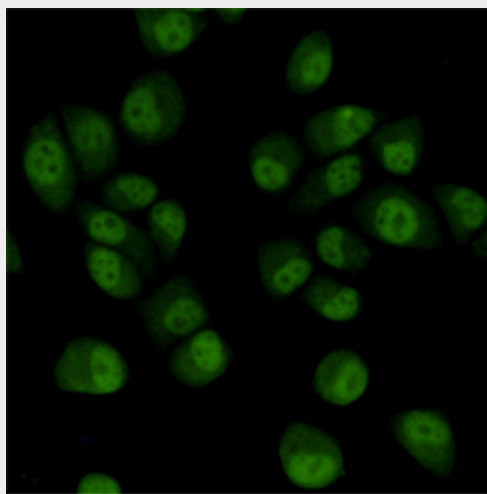
- [Western Blot](#)
- [Blocking Peptides](#)
- [Dot Blot](#)
- [Immunohistochemistry](#)
- [Immunofluorescence](#)
- [Immunoprecipitation](#)
- [Flow Cytometry](#)
- [Cell Culture](#)

**TBLR1 Antibody - Images**

Western blot detection of TBLR1 in Mouse brain, Mouse heart and K562 cell lysates using TBLR1 mouse mAb (1:1000 diluted). Predicted band size: 60KDa. Observed band size: 60KDa.



IHC of paraffin-embedded human breast cancer using anti-TBLR1 mouse mAb diluted 1/500-1/1000



Immunocytochemistry staining of HeLa cells fixed with 4% Paraformaldehyde and using TBLR1 mouse mAb (dilution 1:200).

### **TBLR1 Antibody - Background**

F-box-like protein involved in the recruitment of the ubiquitin/19S proteasome complex to nuclear receptor-regulated transcription units. Plays an essential role in transcription activation mediated by nuclear receptors. Probably acts as integral component of the N-CoR corepressor complex that mediates the recruitment of the 19S proteasome complex, leading to the subsequent proteasomal degradation of N-CoR complex, thereby allowing cofactor exchange, and transcription activation.

### **TBLR1 Antibody - References**

- Zhang J., et al. Mol. Cell 9:611-623(2002).  
Zhang X., et al. Exp. Hematol. 28:1286-1296(2000).  
Ota T., et al. Nat. Genet. 36:40-45(2004).  
Mural R.J., et al. Submitted (SEP-2005) to the EMBL/GenBank/DDBJ databases.  
Yoon H.-G., et al. EMBO J. 22:1336-1346(2003).