

CSK Antibody
Purified Mouse Monoclonal Antibody (Mab)
Catalog # AP52740**Specification**

CSK Antibody - Product Information

Application	WB, ICC
Primary Accession	P41240
Reactivity	Human
Host	Mouse
Clonality	Monoclonal
Isotype	IgG2b
Calculated MW	50 KDa

CSK Antibody - Additional Information**Gene ID** 1445**Other Names**

C SRC;C SRC kinase;C src Tyrosine Kinase;C-SRC kinase;c-src tyrosine kinase;Csk A;CSK;
CSK_HUMAN;CYTOPLASMIC TYROSINE KINASE;EC
2.7.10.2;MGC112926;MGC117393;MGC154049;P60 Src; Protein tyrosine kinase
CYL;Protein-tyrosine kinase CYL;Proto oncogene tyrosine protein kinase;Tyrosine protein kinase
CSK;Tyrosine protein kinase CSK;Tyrosine-protein kinase CSK;zgc:154049.

Dilution

WB~~1:1000

ICC~~1:50

Format

Purified mouse monoclonal in buffer containing 0.1M Tris-Glycine(pH 7.4,150 mM NaCl)with 0.09%
(W/V) sodium azide,0.1mg/mlBSA and 50% glycerol.

Storage

Store at -20 °C.Stable for 12 months from date of receipt

CSK Antibody - Protein Information**Name** CSK**Function**

Non-receptor tyrosine-protein kinase that plays an important role in the regulation of cell growth, differentiation, migration and immune response. Phosphorylates tyrosine residues located in the C-terminal tails of Src-family kinases (SFKs) including LCK, SRC, HCK, FYN, LYN, CSK or YES1. Upon tail phosphorylation, Src-family members engage in intramolecular interactions between the phosphotyrosine tail and the SH2 domain that result in an inactive conformation. To inhibit SFKs, CSK is recruited to the plasma membrane via binding to transmembrane proteins or adapter proteins located near the plasma membrane. Suppresses signaling by various surface receptors,

including T-cell receptor (TCR) and B-cell receptor (BCR) by phosphorylating and maintaining inactive several positive effectors such as FYN or LCK.

Cellular Location

Cytoplasm. Cell membrane. Note=Mainly cytoplasmic, also present in lipid rafts

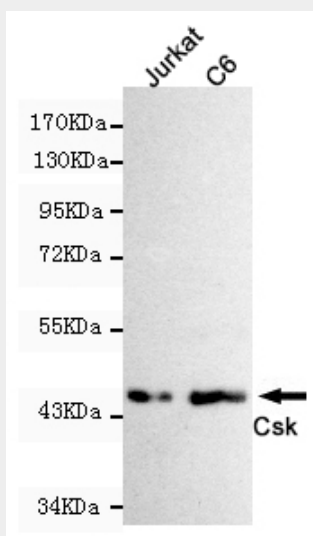
Tissue Location

Expressed in lung and macrophages.

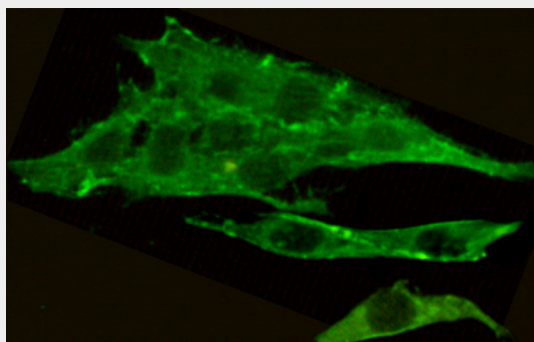
CSK Antibody - Protocols

Provided below are standard protocols that you may find useful for product applications.

- [Western Blot](#)
- [Blocking Peptides](#)
- [Dot Blot](#)
- [Immunohistochemistry](#)
- [Immunofluorescence](#)
- [Immunoprecipitation](#)
- [Flow Cytometry](#)
- [Cell Culture](#)

CSK Antibody - Images

Western blot detection of CSK in C6 and Jurkat cell lysates using CSK mouse mAb (1:1000 diluted). Predicted band size: 50KDa. Observed band size: 50KDa.



Immunocytochemistry staining of C6 cells fixed by anhydrous methanol for 2 h at -20°C and using anti-CSK mouse mAb (dilution 1:50).

CSK Antibody - Background

Non-receptor tyrosine-protein kinase that plays an important role in the regulation of cell growth, differentiation, migration and immune response. Phosphorylates tyrosine residues located in the C-terminal tails of Src-family kinases (SFKs) including LCK, SRC, HCK, FYN, LYN or YES1. Upon tail phosphorylation, Src-family members engage in intramolecular interactions between the phosphotyrosine tail and the SH2 domain that result in an inactive conformation. To inhibit SFKs, CSK is recruited to the plasma membrane via binding to transmembrane proteins or adapter proteins located near the plasma membrane. Suppresses signaling by various surface receptors, including T- cell receptor (TCR) and B-cell receptor (BCR) by phosphorylating and maintaining inactive several positive effectors such as FYN or LCK.

CSK Antibody - References

Partanen J.,et al.Oncogene 6:2013-2018(1991).
Braeuninger A.,et al.Proc. Natl. Acad. Sci. U.S.A. 88:10411-10415(1991).
Brauninger A.,et al.Gene 110:205-211(1992).
Braeuninger A.,et al.Oncogene 8:1365-1369(1993).
Halleck A.,et al.Submitted (JUN-2004) to the EMBL/GenBank/DDBJ databases.