

RhoG Antibody
Purified Rabbit Polyclonal Antibody (Pab)
Catalog # AP53317**Specification**

RhoG Antibody - Product Information

Application	WB
Primary Accession	P84095
Reactivity	Human, Mouse
Host	Rabbit
Clonality	Polyclonal
Calculated MW	21 KDa
Antigen Region	97-146

RhoG Antibody - Additional Information**Gene ID** 391**Other Names**

Rho-related GTP-binding protein RhoG, RHOG, ARHG

Dilution

WB~~ 1:1000

Format

Rabbit IgG in phosphate buffered saline , pH 7.4, 150mM NaCl, 0.09% (W/V) sodium azide and 50% glycerol

Storage

Store at -20 °C.Stable for 12 months from date of receipt

RhoG Antibody - Protein Information**Name** RHOG**Synonyms** ARHG**Function**

Plays a role in immunological synaptic F-actin density and architecture organization (PubMed:33513601). Regulates actin reorganization in lymphocytes, possibly through the modulation of Rac1 activity (PubMed:33513601). Required for the formation of membrane ruffles during macropinocytosis (PubMed:15133129). Plays a role in cell migration and is required for the formation of cup-like structures during trans-endothelial migration of leukocytes (PubMed:17875742). Binds phospholipids in an activation-dependent manner; thereby acting as an anchor for other proteins to the plasma membrane (PM) (PubMed:17875742).

href="http://www.uniprot.org/citations/33513601" target="_blank">33513601). Plays a role in exocytosis of cytotoxic granules (CG) by lymphocytes/Component of the exocytosis machinery in natural killer (NK) and CD8+ T cells (PubMed:33513601). Promotes the docking of cytotoxic granules (CG) to the plasma membrane through the interaction with UNC13D (PubMed:33513601). Involved in the cytotoxic activity of lymphocytes/primary CD8+ T cells (PubMed:33513601).

Cellular Location

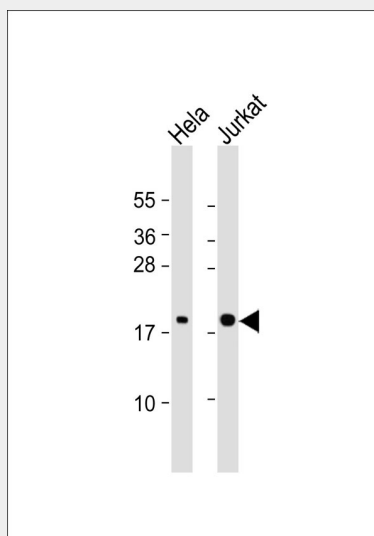
Cell membrane; Lipid-anchor; Cytoplasmic side

RhoG Antibody - Protocols

Provided below are standard protocols that you may find useful for product applications.

- [Western Blot](#)
- [Blocking Peptides](#)
- [Dot Blot](#)
- [Immunohistochemistry](#)
- [Immunofluorescence](#)
- [Immunoprecipitation](#)
- [Flow Cytometry](#)
- [Cell Culture](#)

RhoG Antibody - Images



All lanes : Anti-RhoG Antibody at 1:1000 dilution Lane 1: HeLa whole cell lysate Lane 2: Jurkat whole cell lysate Lysates/proteins at 20 µg per lane. Secondary Goat Anti-Rabbit IgG, (H+L), Peroxidase conjugated at 1/10000 dilution. Predicted band size : 21 kDa Blocking/Dilution buffer: 5% NFDM/TBST.

RhoG Antibody - Background

Required for the formation of membrane ruffles during macropinocytosis. Plays a role in cell migration and is required for the formation of cup-like structures during trans-endothelial migration of leukocytes. In case of Salmonella enterica infection, activated by SopB and ARHGEF26/SGEF,

which induces cytoskeleton rearrangements and promotes bacterial entry.

RhoG Antibody - References

Vincent S.,et al.Mol. Cell. Biol. 12:3138-3148(1992).
Miki T.,et al.Nature 362:462-465(1993).
Puhl H.L. III,et al.Submitted (FEB-2004) to the EMBL/GenBank/DDBJ databases.
Ellerbroek S.M.,et al.Mol. Biol. Cell 15:3309-3319(2004).
Patel J.C.,et al.J. Cell Biol. 175:453-463(2006).