

**Clipin A Antibody**  
**Purified Rabbit Polyclonal Antibody (Pab)**  
**Catalog # AP53337****Specification**

---

**Clipin A Antibody - Product Information**

Application	WB
Primary Accession	<a href="#">P31146</a>
Reactivity	Human
Host	Rabbit
Clonality	Polyclonal
Calculated MW	51 KDa
Antigen Region	187-236

**Clipin A Antibody - Additional Information****Gene ID** 11151**Dilution**

WB~~ 1:500

**Format**

Rabbit IgG in phosphate buffered saline , pH 7.4, 150mM NaCl, 0.09% (W/V) sodium azide and 50% glycerol

**Storage**

Store at -20 °C.Stable for 12 months from date of receipt

**Clipin A Antibody - Protein Information****Name** CORO1A**Synonyms** CORO1**Function**

May be a crucial component of the cytoskeleton of highly motile cells, functioning both in the invagination of large pieces of plasma membrane, as well as in forming protrusions of the plasma membrane involved in cell locomotion. In mycobacteria-infected cells, its retention on the phagosomal membrane prevents fusion between phagosomes and lysosomes.

**Cellular Location**

Cytoplasm, cytoskeleton. Cytoplasm, cell cortex. Cytoplasmic vesicle, phagosome membrane. Note=In non-infected macrophages, associated with the cortical microtubule network. In mycobacteria-infected macrophages, becomes progressively relocalized and retained around the mycobacterial phagosomes. Retention on the phagosomal membrane is strictly dependent on mycobacterial viability and not due to impaired acidification (By similarity).

**Tissue Location**

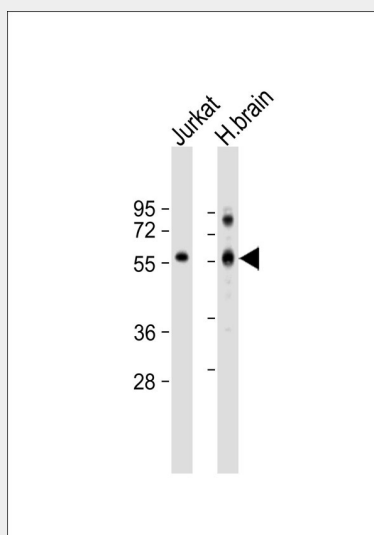
Expressed in brain, thymus, spleen, bone marrow and lymph node. Low in lung and gut

### Clipin A Antibody - Protocols

Provided below are standard protocols that you may find useful for product applications.

- [Western Blot](#)
- [Blocking Peptides](#)
- [Dot Blot](#)
- [Immunohistochemistry](#)
- [Immunofluorescence](#)
- [Immunoprecipitation](#)
- [Flow Cytometry](#)
- [Cell Culture](#)

### Clipin A Antibody - Images



All lanes : Anti-Clipin A Antibody at 1:500 dilution Lane 1: Jurkat whole cell lysate Lane 2: human brain lysate Lysates/proteins at 20 µg per lane. Secondary Goat Anti-Rabbit IgG, (H+L), Peroxidase conjugated at 1/10000 dilution. Predicted band size : 51 kDa Blocking/Dilution buffer: 5% NFDM/TBST.

### Clipin A Antibody - Background

May be a crucial component of the cytoskeleton of highly motile cells, functioning both in the invagination of large pieces of plasma membrane, as well as in forming protrusions of the plasma membrane involved in cell locomotion. In mycobacteria- infected cells, its retention on the phagosomal membrane prevents fusion between phagosomes and lysosomes.

### Clipin A Antibody - References

Suzuki K., et al. FEBS Lett. 364:283-288(1995).  
Grogan A., et al. Submitted (DEC-1995) to the EMBL/GenBank/DDBJ databases.  
Liau G., et al. Submitted (AUG-1995) to the EMBL/GenBank/DDBJ databases.  
Kohchi C., et al. Submitted (MAR-2002) to the EMBL/GenBank/DDBJ databases.  
Ota T., et al. Nat. Genet. 36:40-45(2004).