

NPM3 Antibody (N-term)
Affinity Purified Rabbit Polyclonal Antibody (Pab)
Catalog # AP5335a**Specification**

NPM3 Antibody (N-term) - Product Information

Application	WB, FC, E
Primary Accession	O75607
Other Accession	O9CPP0 , NP_008924.1
Reactivity	Human, Mouse
Host	Rabbit
Clonality	Polyclonal
Isotype	Rabbit IgG
Calculated MW	19344
Antigen Region	30-58

NPM3 Antibody (N-term) - Additional Information**Gene ID** 10360**Other Names**

Nucleoplasmin-3, NPM3

Target/Specificity

This NPM3 antibody is generated from rabbits immunized with a KLH conjugated synthetic peptide between 30-58 amino acids from the N-terminal region of human NPM3.

Dilution

WB~~1:1000

FC~~1:10~50

Format

Purified polyclonal antibody supplied in PBS with 0.09% (W/V) sodium azide. This antibody is purified through a protein A column, followed by peptide affinity purification.

Storage

Maintain refrigerated at 2-8°C for up to 2 weeks. For long term storage store at -20°C in small aliquots to prevent freeze-thaw cycles.

Precautions

NPM3 Antibody (N-term) is for research use only and not for use in diagnostic or therapeutic procedures.

NPM3 Antibody (N-term) - Protein Information**Name** NPM3**Function** Plays a role in the regulation of diverse cellular processes such as ribosome biogenesis,

chromatin remodeling or protein chaperoning (PubMed:[22362753](#), PubMed:[20073534](#)). Modulates the histone chaperone function and the RNA-binding activity of nucleolar phosphoprotein B23/NPM (PubMed:[22362753](#)). Efficiently mediates chromatin remodeling when included in a pentamer containing NPM3 and NPM (PubMed:[15596447](#)).

Cellular Location

Nucleus. Nucleus, nucleolus Note=Mainly found in the granular component of the nucleolus

Tissue Location

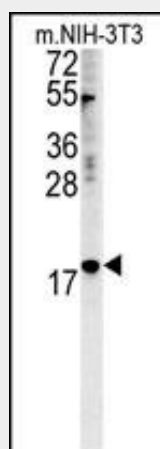
Ubiquitous..

NPM3 Antibody (N-term) - Protocols

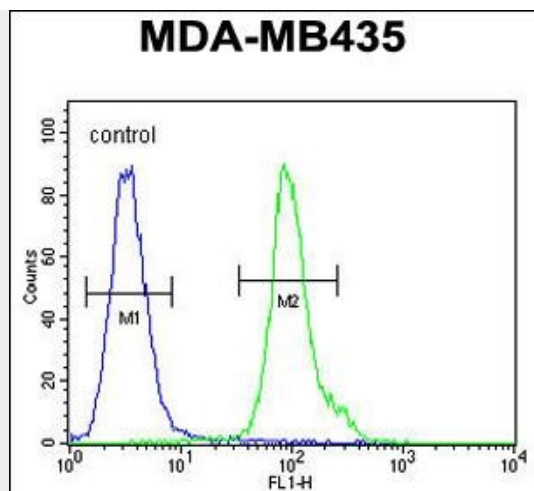
Provided below are standard protocols that you may find useful for product applications.

- [Western Blot](#)
- [Blocking Peptides](#)
- [Dot Blot](#)
- [Immunohistochemistry](#)
- [Immunofluorescence](#)
- [Immunoprecipitation](#)
- [Flow Cytometry](#)
- [Cell Culture](#)

NPM3 Antibody (N-term) - Images



NPM3 Antibody (N-term)(Cat. #AP5335a) western blot analysis in mouse NIH-3T3 cell line lysates (35ug/lane). This demonstrates the NPM3 antibody detected the NPM3 protein (arrow).



NPM3 Antibody (N-term) (Cat. #AP5335a) flow cytometric analysis of MDA-MB435 cells (right histogram) compared to a negative control cell (left histogram). FITC-conjugated goat-anti-rabbit secondary antibodies were used for the analysis.

NPM3 Antibody (N-term) - Background

NPM3 is related to the nuclear chaperone phosphoproteins, nucleoplasmin and nucleophosmin. This protein is strongly expressed in diverse cell types where it localizes primarily to the nucleus. Based on its similarity to nucleoplasmin and nucleophosmin, this protein likely functions as a molecular chaperone in the cell nucleus.

NPM3 Antibody (N-term) - References

Gadad, S.S., et al. Biochemistry 49(7):1355-1357(2010)
Pradeepa, M.M., et al. J. Biol. Chem. 284(43):29956-29967(2009)
Olsen, J.V., et al. Cell 127(3):635-648(2006)