

**Anti-HTRA2 Antibody**  
**Mouse Monoclonal Antibody**  
**Catalog # AP53418****Specification**

---

**Anti-HTRA2 Antibody - Product Information**

Application	IP, WB
Primary Accession	<a href="#">O43464</a>
Reactivity	Human
Host	Mouse
Clonality	Monoclonal
Isotype	IgG1
Immunogen	Recombinant human HtrA2/Omi protein.
Purification	Affinity purified

**Anti-HTRA2 Antibody - Additional Information****Gene ID** 27429**Other Names**

High temperature requirement protein A2;HTRA 2;HtrA like serine protease;HtrA serine peptidase 2;HtrA, E. coli, homolog of, 2;HtrA2;HTRA2\_HUMAN;mitochondrial;Omi stress regulated endoprotease;Omi stress-regulated endoprotease;PARK 13;PARK13;Protease serin

**Dilution**

WB~~1:500

**Format**

Purified mouse monoclonal antibody in PBS(pH 7.4) containing with 0.09% (W/V) sodium azide and 50% glycerol.

**Storage**

Store at -20 °C.Stable for 12 months from date of receipt

**Anti-HTRA2 Antibody - Protein Information****Name** HTRA2**Synonyms** OMI, PRSS25**Function**

Serine protease that shows proteolytic activity against a non-specific substrate beta-casein. Promotes or induces cell death either by direct binding to and inhibition of BIRC proteins (also called inhibitor of apoptosis proteins, IAPs), leading to an increase in caspase activity, or by a BIRC inhibition-independent, caspase- independent and serine protease activity-dependent mechanism. Cleaves THAP5 and promotes its degradation during apoptosis. Isoform 2 seems to be proteolytically inactive.

**Cellular Location**

Mitochondrion intermembrane space. Mitochondrion membrane; Single-pass membrane protein  
Note=Predominantly present in the intermembrane space. Released into the cytosol following apoptotic stimuli, such as UV treatment, and stimulation of mitochondria with caspase-8 truncated BID/tBID

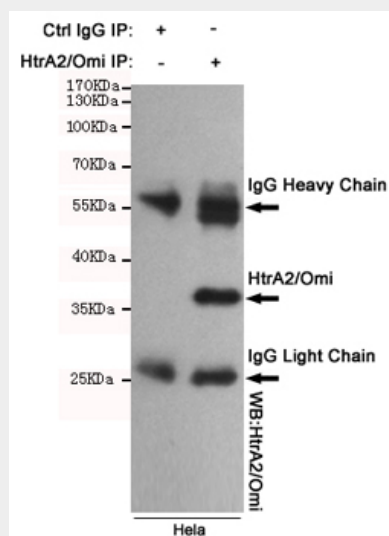
**Tissue Location**

[Isoform 1]: Ubiquitously expressed.

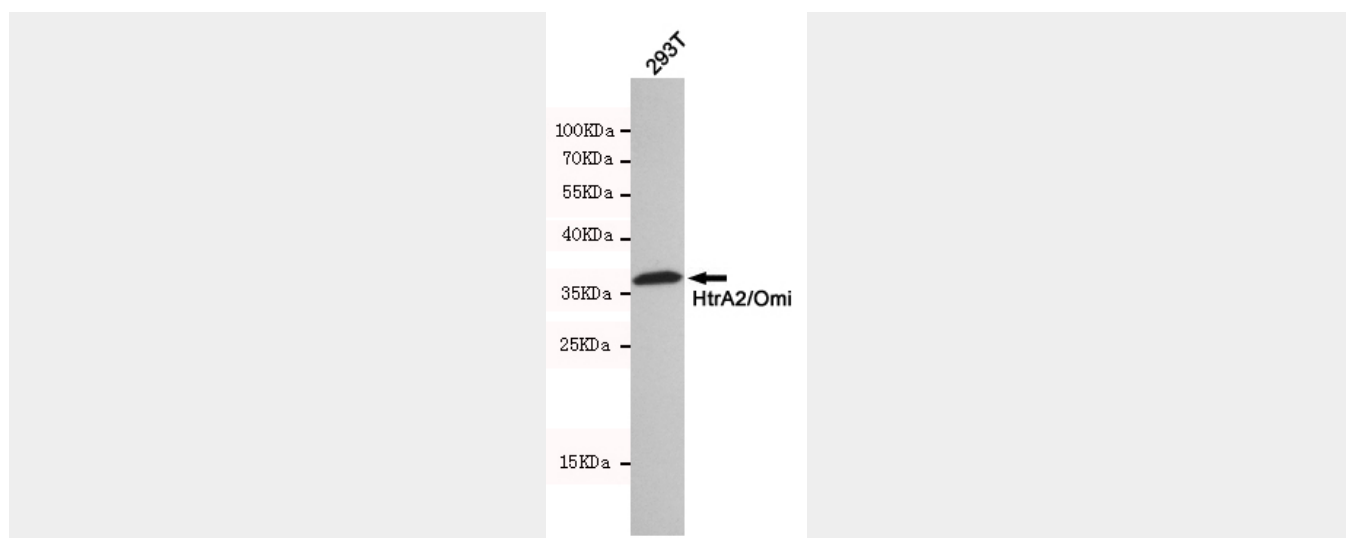
**Anti-HTRA2 Antibody - Protocols**

Provided below are standard protocols that you may find useful for product applications.

- [Western Blot](#)
- [Blocking Peptides](#)
- [Dot Blot](#)
- [Immunohistochemistry](#)
- [Immunofluorescence](#)
- [Immunoprecipitation](#)
- [Flow Cytometry](#)
- [Cell Culture](#)

**Anti-HTRA2 Antibody - Images**

Immunoprecipitation analysis of HeLa cell lysates using HtrA2/Omi mouse mAb.



Western blot detection of HtrA2/Omi in 293T cell lysates using HtrA2/Omi mouse mAb(dilution 1:500).Predicted band size:49kDa.Observed band size:36kDa.

#### **Anti-HTRA2 Antibody - Background**

Serine protease that shows proteolytic activity against a non-specific substrate beta-casein. Promotes or induces cell death either by direct binding to and inhibition of BIRC proteins (also called inhibitor of apoptosis proteins, IAPs), leading to an inc