

**Anti-Phospho-Tyrosine Antibody**  
**Mouse Anti Human Monoclonal Antibody**  
**Catalog # AP53420****Specification**

---

**Anti-Phospho-Tyrosine Antibody - Product Information**

Application	WB
Reactivity	Human, Mouse, Rat, All Species
Host	Mouse
Clonality	Monoclonal
Isotype	IgG2a
Immunogen	Phospho-tyrosine containing peptides.
Purification	Affinity purified

**Anti-Phospho-Tyrosine Antibody - Additional Information****Dilution**

WB~~1:1000

**Format**

Purified mouse monoclonal antibody in PBS(pH 7.4) containing with 0.09% (W/V) sodium azide and 50% glycerol.

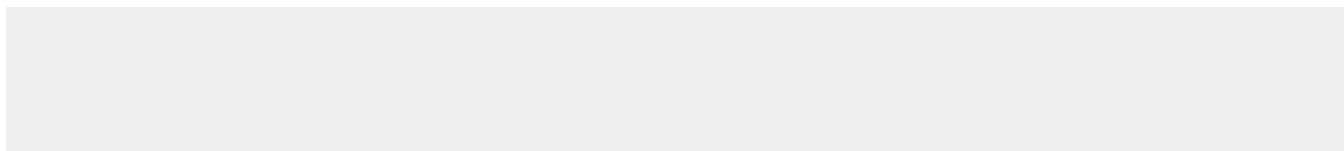
**Storage**

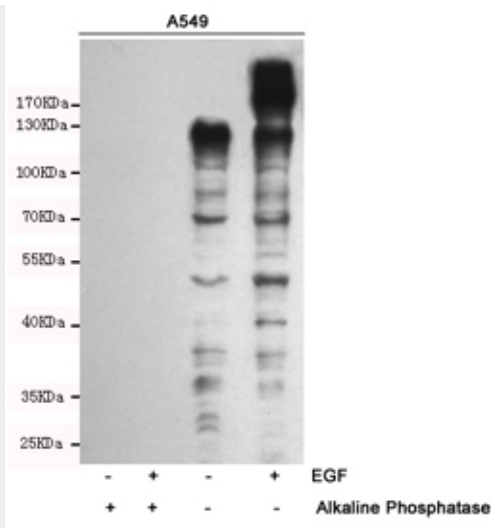
Store at -20 °C.Stable for 12 months from date of receipt

**Anti-Phospho-Tyrosine Antibody - Protein Information****Anti-Phospho-Tyrosine Antibody - Protocols**

Provided below are standard protocols that you may find useful for product applications.

- [Western Blot](#)
- [Blocking Peptides](#)
- [Dot Blot](#)
- [Immunohistochemistry](#)
- [Immunofluorescence](#)
- [Immunoprecipitation](#)
- [Flow Cytometry](#)
- [Cell Culture](#)

**Anti-Phospho-Tyrosine Antibody - Images**



Western blot analysis of extracts from A549 cells untreated and treated with Epidermal Growth Factor (10ng/ml,15min), using Phospho-Tyrosine Mouse mAb. The phospho-specificity of the antibody was further characterized by treating the membrane with alkaline phosphatase after Western transfer.