

**SMAD6 Antibody (Center)**  
**Affinity Purified Rabbit Polyclonal Antibody (Pab)**  
**Catalog # AP5344c****Specification**

---

**SMAD6 Antibody (Center) - Product Information**

|                   |  |
|-------------------|--|
| Application       | WB,E   |
| Primary Accession | <a href="#">O43541</a>                               |
| Other Accession   | <a href="#">O35182</a> , <a href="#">NP_005576.3</a> |
| Reactivity        | Human  |
| Predicted         | Mouse  |
| Host              | Rabbit   |
| Clonality         | Polyclonal   |
| Isotype           | Rabbit IgG   |
| Antigen Region    | 358-386  |

**SMAD6 Antibody (Center) - Additional Information****Gene ID** 4091**Other Names**

Mothers against decapentaplegic homolog 6, MAD homolog 6, Mothers against DPP homolog 6, SMAD family member 6, SMAD 6, Smad6, hSMAD6, SMAD6, MADH6

**Target/Specificity**

This SMAD6 antibody is generated from rabbits immunized with a KLH conjugated synthetic peptide between 358-386 amino acids from the Central region of human SMAD6.

**Dilution**

WB~~1:500

**Format**

Purified polyclonal antibody supplied in PBS with 0.09% (W/V) sodium azide. This antibody is purified through a protein A column, followed by peptide affinity purification.

**Storage**

Maintain refrigerated at 2-8°C for up to 2 weeks. For long term storage store at -20°C in small aliquots to prevent freeze-thaw cycles.

**Precautions**

SMAD6 Antibody (Center) is for research use only and not for use in diagnostic or therapeutic procedures.

**SMAD6 Antibody (Center) - Protein Information****Name** SMAD6**Synonyms** MADH6

**Function** Transforming growth factor-beta superfamily receptors signaling occurs through the Smad family of intracellular mediators. SMAD6 is an inhibitory Smad (i-Smad) that negatively regulates signaling downstream of type I transforming growth factor-beta (PubMed:[9436979](#), PubMed:[16951688](#), PubMed:[22275001](#), PubMed:[9759503](#), PubMed:[10647776](#), PubMed:[10708948](#), PubMed:[10708949](#), PubMed:[30848080](#)). Acts as a mediator of TGF-beta and BMP anti-inflammatory activities. Suppresses IL1R-TLR signaling through its direct interaction with PEL1, preventing NF-kappa-B activation, nuclear transport and NF-kappa-B- mediated expression of pro-inflammatory genes (PubMed:[16951688](#)). Blocks the BMP-SMAD1 signaling pathway by competing with SMAD4 for receptor- activated SMAD1-binding (PubMed:[9436979](#), PubMed:[30848080](#)). Binds to regulatory elements in target promoter regions (PubMed:[16491121](#)).

#### **Cellular Location**

Nucleus.

#### **Tissue Location**

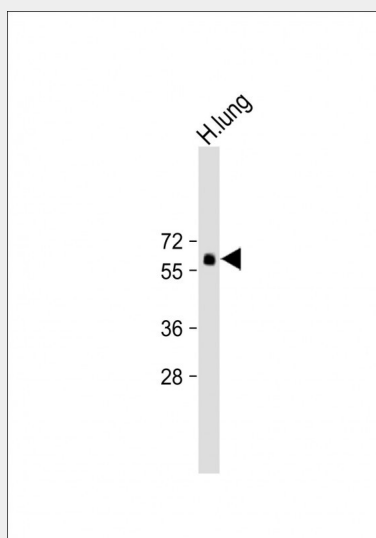
[Isoform B]: Expressed in the brain, heart, ovary, peripheral blood leukocytes, small intestine, spleen, thymus, bone marrow, fetal liver and lymph nodes.

### **SMAD6 Antibody (Center) - Protocols**

Provided below are standard protocols that you may find useful for product applications.

- [Western Blot](#)
- [Blocking Peptides](#)
- [Dot Blot](#)
- [Immunohistochemistry](#)
- [Immunofluorescence](#)
- [Immunoprecipitation](#)
- [Flow Cytometry](#)
- [Cell Culture](#)

### **SMAD6 Antibody (Center) - Images**



Anti-SMAD6 Antibody (Center) at 1:500 dilution + H. lung whole cell lysate Lysates/proteins at 20 µg per lane. Secondary Goat Anti-Rabbit IgG, (H+L), Peroxidase conjugated at 1/10000 dilution. Predicted band size : 53 kDa Blocking/Dilution buffer: 5% NFDm/TBST.

### **SMAD6 Antibody (Center) - Background**

SMAD6 belongs to the SMAD family of proteins, which are related to Drosophila 'mothers against decapentaplegic' (Mad) and C. elegans Sma. SMAD proteins are signal transducers and transcriptional modulators that mediate multiple signaling pathways. This protein functions in the negative regulation of BMP and TGF-beta/activin-signalling.

#### **SMAD6 Antibody (Center) - References**

Tseng, Z.H., et al. Heart Rhythm 6(12):1745-1750(2009)

Shintani, M., et al. J. Med. Genet. 46(5):331-337(2009)

Yu, H., et al. Acta Derm. Venereol. 89(4):351-356(2009)