

SFRS16 Antibody (Center)
Affinity Purified Rabbit Polyclonal Antibody (Pab)
Catalog # AP5351c**Specification**

SFRS16 Antibody (Center) - Product Information

| | |
|-------------------|--|
| Application | WB, FC,E |
| Primary Accession | Q8N2M8 |
| Other Accession | Q5HZB6 , Q8CFC7 , A0JN15 , NP_008987.2 |
| Reactivity | Human |
| Predicted | Bovine, Mouse, Rat |
| Host | Rabbit |
| Clonality | Polyclonal |
| Isotype | Rabbit IgG |
| Calculated MW | 77162 |
| Antigen Region | 254-283 |

SFRS16 Antibody (Center) - Additional Information**Gene ID** 11129**Other Names**

CLK4-associating serine/arginine rich protein, Splicing factor, arginine/serine-rich 16, Suppressor of white-apricot homolog 2, CLASRP, SFRS16, SWAP2

Target/Specificity

This SFRS16 antibody is generated from rabbits immunized with a KLH conjugated synthetic peptide between 254-283 amino acids from the Central region of human SFRS16.

Dilution

WB~~1:1000
FC~~1:10~50

Format

Purified polyclonal antibody supplied in PBS with 0.09% (W/V) sodium azide. This antibody is purified through a protein A column, followed by peptide affinity purification.

Storage

Maintain refrigerated at 2-8°C for up to 2 weeks. For long term storage store at -20°C in small aliquots to prevent freeze-thaw cycles.

Precautions

SFRS16 Antibody (Center) is for research use only and not for use in diagnostic or therapeutic procedures.

SFRS16 Antibody (Center) - Protein Information**Name** CLASRP

Synonyms SFRS16, SWAP2

Function Probably functions as an alternative splicing regulator. May regulate the mRNA splicing of genes such as CLK1. May act by regulating members of the CLK kinase family (By similarity).

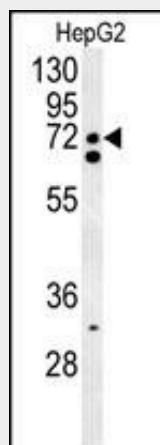
Cellular Location

Nucleus.

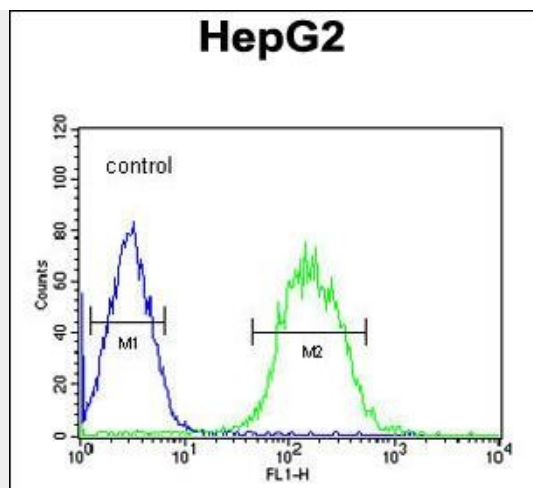
SFRS16 Antibody (Center) - Protocols

Provided below are standard protocols that you may find useful for product applications.

- [Western Blot](#)
- [Blocking Peptides](#)
- [Dot Blot](#)
- [Immunohistochemistry](#)
- [Immunofluorescence](#)
- [Immunoprecipitation](#)
- [Flow Cytometry](#)
- [Cell Culture](#)

SFRS16 Antibody (Center) - Images

SFRS16 Antibody (Center) (Cat. #AP5351c) western blot analysis in HepG2 cell line lysates (35ug/lane). This demonstrates the SFRS16 antibody detected the SFRS16 protein (arrow).



SFRS16 Antibody (Center) (Cat. #AP5351c) flow cytometric analysis of HepG2 cells (right histogram) compared to a negative control cell (left histogram). FITC-conjugated goat-anti-rabbit secondary antibodies were used for the analysis.

SFRS16 Antibody (Center) - Background

SFRS16 is probably functions as an alternative splicing regulator. SFRS16 may regulate the mRNA splicing of genes such as CLK1. This may act by regulating members of the CLK kinase family.

SFRS16 Antibody (Center) - References

Hosgood, H.D. III, et al. Occup Environ Med 66(12):848-853(2009)
Sugiyama, N., et al. Mol. Cell Proteomics 6(6):1103-1109(2007)
Olsen, J.V., et al. Cell 127(3):635-648(2006)