

**WDR18 Antibody (C-term)**  
**Affinity Purified Rabbit Polyclonal Antibody (Pab)**  
**Catalog # AP5355B****Specification**

---

**WDR18 Antibody (C-term) - Product Information**

Application	WB,E
Primary Accession	<a href="#">Q9BV38</a>
Other Accession	<a href="#">Q3SZD4</a> , <a href="#">NP_077005.2</a>
Reactivity	Human, Mouse
Predicted	Bovine
Host	Rabbit
Clonality	Polyclonal
Isotype	Rabbit IgG
Calculated MW	47405
Antigen Region	390-418

**WDR18 Antibody (C-term) - Additional Information****Gene ID** 57418**Other Names**

WD repeat-containing protein 18, WDR18

**Target/Specificity**

This WDR18 antibody is generated from rabbits immunized with a KLH conjugated synthetic peptide between 390-418 amino acids from the C-terminal region of human WDR18.

**Dilution**

WB~~1:1000

**Format**

Purified polyclonal antibody supplied in PBS with 0.09% (W/V) sodium azide. This antibody is purified through a protein A column, followed by peptide affinity purification.

**Storage**

Maintain refrigerated at 2-8°C for up to 2 weeks. For long term storage store at -20°C in small aliquots to prevent freeze-thaw cycles.

**Precautions**

WDR18 Antibody (C-term) is for research use only and not for use in diagnostic or therapeutic procedures.

**WDR18 Antibody (C-term) - Protein Information****Name** WDR18**Function** Functions as a component of the Five Friends of Methylated CHTOP (5FMC) complex; the

5FMC complex is recruited to ZNF148 by methylated CHTOP, leading to desumoylation of ZNF148 and subsequent transactivation of ZNF148 target genes (PubMed:[22872859](#)). Component of the PELP1 complex involved in the nucleolar steps of 28S rRNA maturation and the subsequent nucleoplasmic transit of the pre-60S ribosomal subunit (PubMed:[21326211](#)). May play a role during development (By similarity).

#### Cellular Location

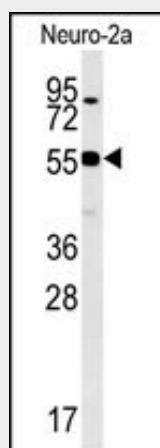
Nucleus, nucleolus. Nucleus, nucleoplasm {ECO:0000250|UniProtKB:Q4VBE8}. Cytoplasm {ECO:0000250|UniProtKB:Q4VBE8}. Dynein axonemal particle {ECO:0000250|UniProtKB:A0A1L8HX76}. Note=Mainly found in the nucleoplasm, with low levels detected in the cytoplasmic and chromatin fractions. {ECO:0000250|UniProtKB:Q4VBE8}

#### WDR18 Antibody (C-term) - Protocols

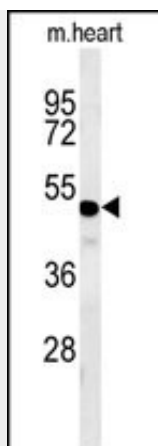
Provided below are standard protocols that you may find useful for product applications.

- [Western Blot](#)
- [Blocking Peptides](#)
- [Dot Blot](#)
- [Immunohistochemistry](#)
- [Immunofluorescence](#)
- [Immunoprecipitation](#)
- [Flow Cytometry](#)
- [Cell Culture](#)

#### WDR18 Antibody (C-term) - Images



WDR18 Antibody (C-term) (Cat. #AP5355b) western blot analysis in Neuro-2a cell line lysates (35ug/lane). This demonstrates the WDR18 antibody detected the WDR18 protein (arrow).



WDR18 Antibody (C-term) (Cat. #AP5355b) western blot analysis in mouse heart tissue lysates (35ug/lane). This demonstrates the WDR18 antibody detected the WDR18 protein (arrow).

#### **WDR18 Antibody (C-term) - Background**

WDR18 encodes a member of the WD repeat protein family. WD repeats are minimally conserved regions of approximately 40 amino acids typically bracketed by gly-his and trp-aspartic acid (GH-WD), which may facilitate formation of heterotrimeric or multiprotein complexes. Members of this family are involved in a variety of cellular processes, including cell cycle progression, signal transduction, apoptosis, and gene regulation.

#### **WDR18 Antibody (C-term) - References**

Rikova, K., et al. Cell 131(6):1190-1203(2007)  
Andersen, J.S., et al. Nature 433(7021):77-83(2005)  
Grimwood, J., et al. Nature 428(6982):529-535(2004)