

**KCTD21 Antibody (C-term)**  
**Affinity Purified Rabbit Polyclonal Antibody (Pab)**  
**Catalog # AP5408b****Specification**

---

**KCTD21 Antibody (C-term) - Product Information**

Application	WB, IHC-P, FC,E
Primary Accession	<a href="#">Q4G0X4</a>
Other Accession	<a href="#">Q3URF8</a> , <a href="#">NP_001025030.1</a>
Reactivity	Human, Mouse
Host	Rabbit
Clonality	Polyclonal
Isotype	Rabbit IgG
Calculated MW	29643
Antigen Region	232-260

**KCTD21 Antibody (C-term) - Additional Information****Gene ID** 283219**Other Names**

BTB/POZ domain-containing protein KCTD21, KCTD21

**Target/Specificity**

This KCTD21 antibody is generated from rabbits immunized with a KLH conjugated synthetic peptide between 232-260 amino acids from the C-terminal region of human KCTD21.

**Dilution**

WB~~1:1000  
IHC-P~~1:50~100  
FC~~1:10~50

**Format**

Purified polyclonal antibody supplied in PBS with 0.09% (W/V) sodium azide. This antibody is purified through a protein A column, followed by peptide affinity purification.

**Storage**

Maintain refrigerated at 2-8°C for up to 2 weeks. For long term storage store at -20°C in small aliquots to prevent freeze-thaw cycles.

**Precautions**

KCTD21 Antibody (C-term) is for research use only and not for use in diagnostic or therapeutic procedures.

**KCTD21 Antibody (C-term) - Protein Information****Name** KCTD21

**Function** Probable substrate-specific adapter of a BCR (BTB-CUL3-RBX1) E3 ubiquitin-protein ligase complex mediating the ubiquitination and subsequent proteasomal degradation of target proteins. Promotes the ubiquitination of HDAC1. Can function as antagonist of the Hedgehog pathway by affecting the nuclear transfer of transcription factor GLI1; the function probably occurs via HDAC1 down-regulation, keeping GLI1 acetylated and inactive. Inhibits cell growth and tumorigenicity of medulloblastoma (MDB) (PubMed:[21472142](#)).

**Tissue Location**

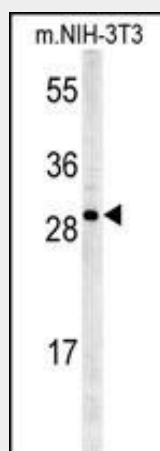
Highly expressed in cerebellum and brain. Expression is down-regulated in medulloblastoma

**KCTD21 Antibody (C-term) - Protocols**

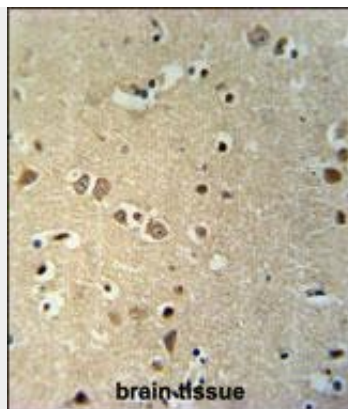
Provided below are standard protocols that you may find useful for product applications.

- [Western Blot](#)
- [Blocking Peptides](#)
- [Dot Blot](#)
- [Immunohistochemistry](#)
- [Immunofluorescence](#)
- [Immunoprecipitation](#)
- [Flow Cytometry](#)
- [Cell Culture](#)

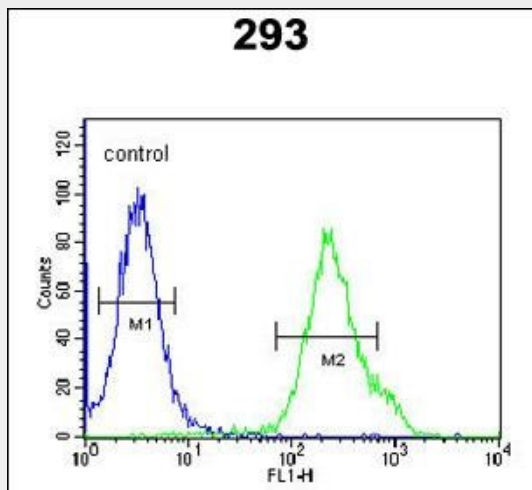
**KCTD21 Antibody (C-term) - Images**



KCTD21 Antibody (C-term)(Cat. #AP5408b) western blot analysis in mouse NIH-3T3 cell line lysates (35ug/lane). This demonstrates the KCTD21 antibody detected the KCTD21 protein (arrow).



KCTD21 Antibody (C-term) (Cat. #AP5408b) immunohistochemistry analysis in formalin fixed and paraffin embedded human brain tissue followed by peroxidase conjugation of the secondary antibody and DAB staining. This data demonstrates the use of the KCTD21 Antibody (C-term) for immunohistochemistry. Clinical relevance has not been evaluated.



KCTD21 Antibody (C-term) (Cat. #AP5408b) flow cytometric analysis of 293 cells (right histogram) compared to a negative control cell (left histogram). FITC-conjugated goat-anti-rabbit secondary antibodies were used for the analysis.

#### KCTD21 Antibody (C-term) - References

Gerhard, D.S., et al. Genome Res. 14 (10B), 2121-2127 (2004) :