

**PGD Antibody (Center)**  
**Affinity Purified Rabbit Polyclonal Antibody (Pab)**  
**Catalog # AP5448c**

**Specification**

---

**PGD Antibody (Center) - Product Information**

Application	WB, IHC-P, FC,E
Primary Accession	<a href="#">P52209</a>
Other Accession	<a href="#">P85968</a> , <a href="#">P14332</a> , <a href="#">Q9DCD0</a> , <a href="#">NP_002622.2</a> , <a href="#">P00349</a>
Reactivity	Human, Mouse
Predicted	Pig, Rat, Sheep
Host	Rabbit
Clonality	Polyclonal
Isotype	Rabbit IgG
Calculated MW	53140
Antigen Region	236-265

**PGD Antibody (Center) - Additional Information**

**Gene ID** 5226

**Other Names**

6-phosphogluconate dehydrogenase, decarboxylating, PGD, PGDH

**Target/Specificity**

This PGD antibody is generated from rabbits immunized with a KLH conjugated synthetic peptide between 236-265 amino acids from the Central region of human PGD.

**Dilution**

WB~~1:1000  
IHC-P~~1:50~100  
FC~~1:10~50

**Format**

Purified polyclonal antibody supplied in PBS with 0.09% (W/V) sodium azide. This antibody is purified through a protein A column, followed by peptide affinity purification.

**Storage**

Maintain refrigerated at 2-8°C for up to 2 weeks. For long term storage store at -20°C in small aliquots to prevent freeze-thaw cycles.

**Precautions**

PGD Antibody (Center) is for research use only and not for use in diagnostic or therapeutic procedures.

**PGD Antibody (Center) - Protein Information**

**Name** PGD

**Synonyms** PGDH

**Function** Catalyzes the oxidative decarboxylation of 6-phosphogluconate to ribulose 5-phosphate and CO(2), with concomitant reduction of NADP to NADPH.

**Cellular Location**

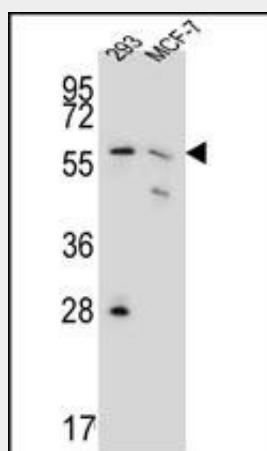
Cytoplasm.

### PGD Antibody (Center) - Protocols

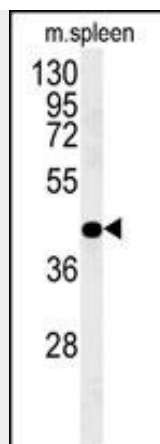
Provided below are standard protocols that you may find useful for product applications.

- [Western Blot](#)
- [Blocking Peptides](#)
- [Dot Blot](#)
- [Immunohistochemistry](#)
- [Immunofluorescence](#)
- [Immunoprecipitation](#)
- [Flow Cytometry](#)
- [Cell Culture](#)

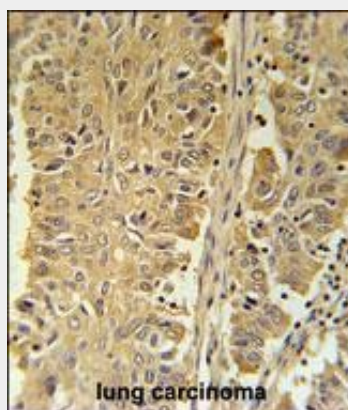
### PGD Antibody (Center) - Images



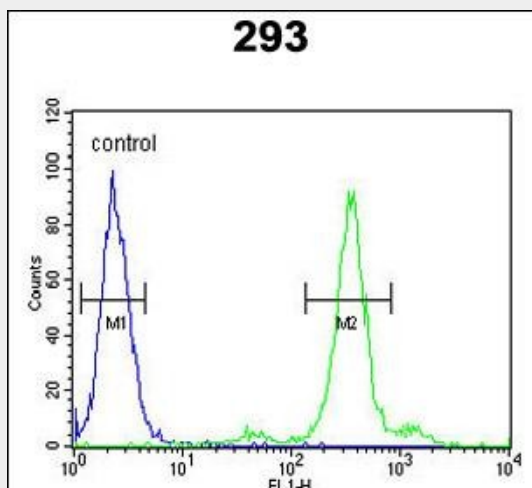
PGD Antibody (Center) (Cat.#AP5448c) western blot analysis in 293,MCF-7 cell line lysates (35ug/lane).This demonstrates the PGD antibody detected PGD protein (arrow).



PGD Antibody (Center) (Cat.#AP5448c) western blot analysis in mouse spleen tissue lysates (35ug/lane). This demonstrates the PGD antibody detected PGD protein (arrow).



PGD Antibody (Center) (Cat. #AP5448c) immunohistochemistry analysis in formalin fixed and paraffin embedded human lung carcinoma followed by peroxidase conjugation of the secondary antibody and DAB staining. This data demonstrates the use of the PGD Antibody (Center) for immunohistochemistry. Clinical relevance has not been evaluated.



PGD Antibody (Center) (Cat. #AP5448c) flow cytometric analysis of 293 cells (right histogram) compared to a negative control cell (left histogram). FITC-conjugated goat-anti-rabbit secondary antibodies were used for the analysis.

#### PGD Antibody (Center) - Background

6-phosphogluconate dehydrogenase is the second dehydrogenase in the pentose phosphate shunt. Deficiency of this enzyme is generally asymptomatic, and the inheritance of this disorder is autosomal dominant. Hemolysis results from combined deficiency of 6-phosphogluconate dehydrogenase and 6-phosphogluconolactonase suggesting a synergism of the two enzymopathies.

#### **PGD Antibody (Center) - References**

Lehner, B., et al. Genome Res. 14(7):1315-1323(2004)  
Kerimov, B.F. Vopr. Med. Khim. 48(5):490-496(2002)  
Rippa, M., et al. Biochim. Biophys. Acta 1429(1):83-92(1998)

#### **PGD Antibody (Center) - Citations**

- [TAp73-induced phosphofructokinase-1 transcription promotes the Warburg effect and enhances cell proliferation.](#)