

**C19orf39 Antibody (Center)**  
**Affinity Purified Rabbit Polyclonal Antibody (Pab)**  
**Catalog # AP5547c**

**Specification**

---

**C19orf39 Antibody (Center) - Product Information**

Application	WB, IHC-P,E
Primary Accession	<a href="#">Q6NVH7</a>
Other Accession	<a href="#">NP_787067.2</a>
Reactivity	Human, Mouse
Host	Rabbit
Clonality	Polyclonal
Isotype	Rabbit IgG
Calculated MW	24311
Antigen Region	84-110

**C19orf39 Antibody (Center) - Additional Information**

**Gene ID** 126074

**Other Names**

ATPase SWSAP1, SWIM-type zinc finger 7-associated protein 1, SWS1-associated protein 1, ZSWIM7-associated protein 1, ZSWIM7AP1, SWSAP1, C19orf39

**Target/Specificity**

This C19orf39 antibody is generated from rabbits immunized with a KLH conjugated synthetic peptide between 84-110 amino acids from the Central region of human C19orf39.

**Dilution**

WB~~1:1000  
IHC-P~~1:50~100

**Format**

Purified polyclonal antibody supplied in PBS with 0.09% (W/V) sodium azide. This antibody is purified through a protein A column, followed by peptide affinity purification.

**Storage**

Maintain refrigerated at 2-8°C for up to 2 weeks. For long term storage store at -20°C in small aliquots to prevent freeze-thaw cycles.

**Precautions**

C19orf39 Antibody (Center) is for research use only and not for use in diagnostic or therapeutic procedures.

**C19orf39 Antibody (Center) - Protein Information**

**Name** SWSAP1

**Synonyms** C19orf39

**Function** ATPase which is preferentially stimulated by single-stranded DNA and is involved in homologous recombination repair (HRR). Has a DNA-binding activity which is independent of its ATPase activity.

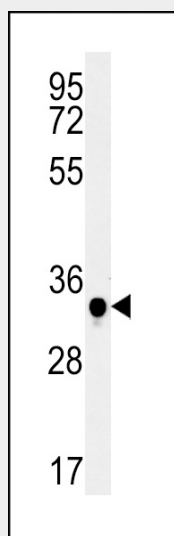
**Cellular Location**

Nucleus.

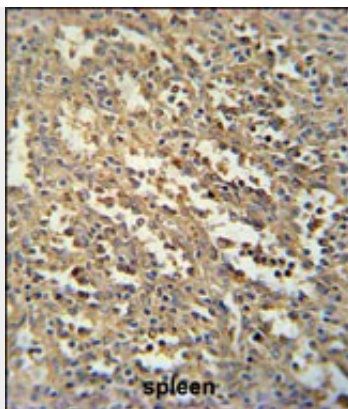
**C19orf39 Antibody (Center) - Protocols**

Provided below are standard protocols that you may find useful for product applications.

- [Western Blot](#)
- [Blocking Peptides](#)
- [Dot Blot](#)
- [Immunohistochemistry](#)
- [Immunofluorescence](#)
- [Immunoprecipitation](#)
- [Flow Cytometry](#)
- [Cell Culture](#)

**C19orf39 Antibody (Center) - Images**

C19orf39 Antibody (Center) (Cat. #AP5547c) western blot analysis in mouse spleen tissue lysates (15ug/lane). This demonstrates the C19orf39 antibody detected C19orf39 protein (arrow).



C19orf39 Antibody (Center) (Cat. #AP5547c) immunohistochemistry analysis in formalin fixed and paraffin embedded human spleen tissue followed by peroxidase conjugation of the secondary antibody and DAB staining. This data demonstrates the use of the C19orf39 Antibody (Center) for immunohistochemistry. Clinical relevance has not been evaluated.