

SC31B Antibody (C-term)
Affinity Purified Rabbit Polyclonal Antibody (Pab)
Catalog # AP5617b**Specification**

SC31B Antibody (C-term) - Product Information

Application	WB, FC,E
Primary Accession	O9NQW1
Other Accession	NP_056305.1
Reactivity	Human
Host	Rabbit
Clonality	Polyclonal
Isotype	Rabbit IgG
Calculated MW	128697
Antigen Region	1076-1104

SC31B Antibody (C-term) - Additional Information**Gene ID** 25956**Other Names**

Protein transport protein Sec31B, SEC31-like protein 2, SEC31-related protein B, SEC31B-1, SEC31B, SEC31L2

Target/Specificity

This SC31B antibody is generated from rabbits immunized with a KLH conjugated synthetic peptide between 1076-1104 amino acids from the C-terminal region of human SC31B.

DilutionWB~~1:1000
FC~~1:10~50**Format**

Purified polyclonal antibody supplied in PBS with 0.09% (W/V) sodium azide. This antibody is purified through a protein A column, followed by peptide affinity purification.

Storage

Maintain refrigerated at 2-8°C for up to 2 weeks. For long term storage store at -20°C in small aliquots to prevent freeze-thaw cycles.

Precautions

SC31B Antibody (C-term) is for research use only and not for use in diagnostic or therapeutic procedures.

SC31B Antibody (C-term) - Protein Information**Name** SEC31B

Synonyms SEC31L2

Function As a component of the coat protein complex II (COPII), may function in vesicle budding and cargo export from the endoplasmic reticulum.

Cellular Location

Cytoplasm. Cytoplasmic vesicle, COPII-coated vesicle membrane; Peripheral membrane protein; Cytoplasmic side. Endoplasmic reticulum membrane; Peripheral membrane protein

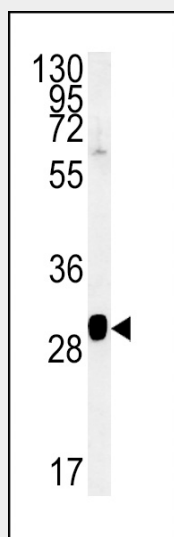
Tissue Location

Ubiquitously expressed at low levels with specific expression in thymus and testis. Expressed in testis by Sertoli cells, Leydig cells and spermatogonia and in cerebellum more prominently by Purkinje and granular cells (at protein level)

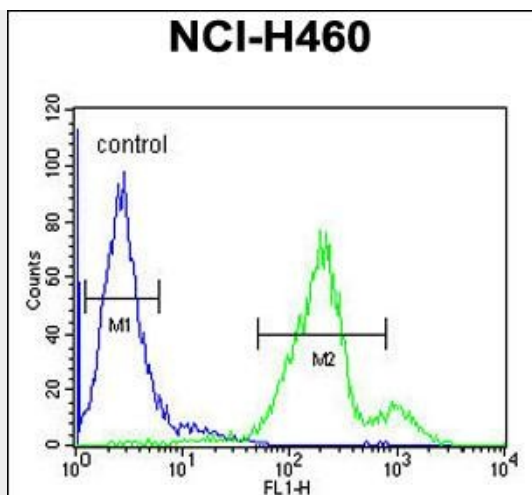
SC31B Antibody (C-term) - Protocols

Provided below are standard protocols that you may find useful for product applications.

- [Western Blot](#)
- [Blocking Peptides](#)
- [Dot Blot](#)
- [Immunohistochemistry](#)
- [Immunofluorescence](#)
- [Immunoprecipitation](#)
- [Flow Cytometry](#)
- [Cell Culture](#)

SC31B Antibody (C-term) - Images

SC31B Antibody (C-term) (Cat. #AP5617b) western blot analysis in NCI-H460 cell line lysates (15ug/lane). This demonstrates the SC31B antibody detected the SC31B protein (arrow).



SC31B Antibody (C-term) (Cat. #AP5617b) flow cytometric analysis of NCI-H460 cells (right histogram) compared to a negative control cell (left histogram). FITC-conjugated goat-anti-rabbit secondary antibodies were used for the analysis.

SC31B Antibody (C-term) - Background

This gene encodes a protein of unknown function. The protein has moderate similarity to rat VAP1 protein which is an endosomal membrane-associated protein, containing a putative Ca²⁺/calmodulin-dependent kinase II phosphorylation site.

SC31B Antibody (C-term) - References

Stankewich, M.C., et al. J. Cell. Sci. 119 (PT 5), 958-969 (2006) :
 Grupe, A., et al. Am. J. Hum. Genet. 78(1):78-88(2006)
 Tang, B.L., et al. J. Biol. Chem. 275(18):13597-13604(2000)