

**BTBD9 Antibody (Center)**  
**Affinity Purified Rabbit Polyclonal Antibody (Pab)**  
**Catalog # AP5672C****Specification**

---

**BTBD9 Antibody (Center) - Product Information**

Application	WB, IHC-P, FC,E
Primary Accession	<a href="#">Q96Q07</a>
Other Accession	<a href="#">Q5POR3</a> , <a href="#">Q8C726</a> , <a href="#">A4IFG2</a> , <a href="#">NP_443125.1</a>
Reactivity	Human
Predicted	Bovine, Mouse, Rat
Host	Rabbit
Clonality	Polyclonal
Isotype	Rabbit IgG
Calculated MW	69188
Antigen Region	237-262

**BTBD9 Antibody (Center) - Additional Information****Gene ID** 114781**Other Names**

BTB/POZ domain-containing protein 9, BTBD9, KIAA1880

**Target/Specificity**

This BTBD9 antibody is generated from rabbits immunized with a KLH conjugated synthetic peptide between 237-262 amino acids from the Central region of human BTBD9.

**Dilution**

WB~~1:1000  
IHC-P~~1:50~100  
FC~~1:10~50

**Format**

Purified polyclonal antibody supplied in PBS with 0.09% (W/V) sodium azide. This antibody is purified through a protein A column, followed by peptide affinity purification.

**Storage**

Maintain refrigerated at 2-8°C for up to 2 weeks. For long term storage store at -20°C in small aliquots to prevent freeze-thaw cycles.

**Precautions**

BTBD9 Antibody (Center) is for research use only and not for use in diagnostic or therapeutic procedures.

**BTBD9 Antibody (Center) - Protein Information****Name** BTBD9

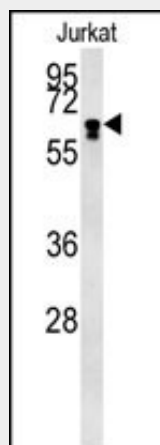
**Synonyms** KIAA1880**Tissue Location**

Detected in the brain (at protein level) (PubMed:22658601). Moderately expressed in all specific brain regions examined (PubMed:11572484). Expressed in the dopaminergic neurons of the substantia nigra and A11 neurons (PubMed:22658601). Highly expressed in kidney and moderately expressed in all other adult and fetal tissues (PubMed:11572484).

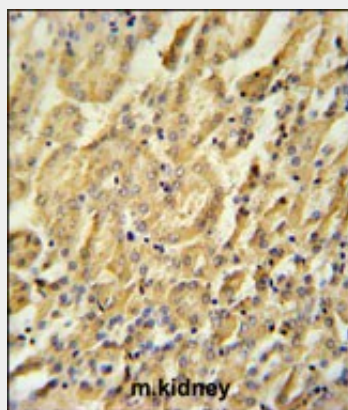
**BTBD9 Antibody (Center) - Protocols**

Provided below are standard protocols that you may find useful for product applications.

- [Western Blot](#)
- [Blocking Peptides](#)
- [Dot Blot](#)
- [Immunohistochemistry](#)
- [Immunofluorescence](#)
- [Immunoprecipitation](#)
- [Flow Cytometry](#)
- [Cell Culture](#)

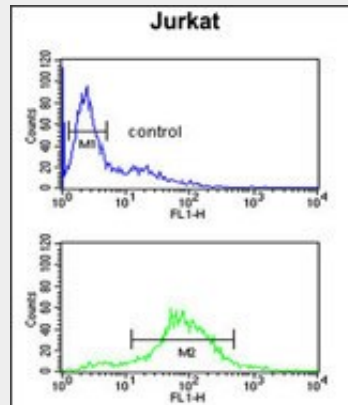
**BTBD9 Antibody (Center) - Images**

BTBD9 Antibody (Center) (Cat. #AP5672c) western blot analysis in Jurkat cell line lysates (15ug/lane). This demonstrates the BTBD9 antibody detected the BTBD9 protein (arrow).



BTBD9 Antibody (Center) (Cat. #AP5672c) immunohistochemistry analysis in formalin fixed and

paraffin embedded mouse kidney tissue followed by peroxidase conjugation of the secondary antibody and DAB staining. This data demonstrates the use of the BTBD9 Antibody (Center) for immunohistochemistry. Clinical relevance has not been evaluated.



BTBD9 Antibody (Center) (Cat. #AP5672c) flow cytometric analysis of Jurkat cells (bottom histogram) compared to a negative control cell (top histogram). FITC-conjugated goat-anti-rabbit secondary antibodies were used for the analysis.

#### **BTBD9 Antibody (Center) - Background**

This locus encodes a BTB/POZ domain-containing protein. This domain is known to be involved in protein-protein interactions. Polymorphisms at this locus have been reported to be associated with susceptibility to Restless Legs Syndrome and may also be associated with Tourette Syndrome.

#### **BTBD9 Antibody (Center) - References**

Riviere, J.B., et al. Arch. Neurol. 66(10):1267-1272(2009)  
Schimmelmann, B.G., et al. J Psychiatr Res 43(10):941-945(2009)  
Kemlink, D., et al. J. Med. Genet. 46(5):315-318(2009)  
Jones, L.C., et al. Genes Brain Behav. 7(5):513-514(2008)