

MARCH5 Antibody (N-term)
Affinity Purified Rabbit Polyclonal Antibody (Pab)
Catalog # AP5677a

Specification

MARCH5 Antibody (N-term) - Product Information

Application	WB, IHC-P-Leica,E
Primary Accession	Q9NX47
Other Accession	Q6GM44 , Q3KNM2 , Q5ZJ41 , Q3ZC24 , NP_060294
Reactivity	Human, Mouse
Predicted	Bovine, Chicken, Xenopus
Host	Rabbit
Clonality	Polyclonal
Isotype	Rabbit IgG
Antigen Region	4-32

MARCH5 Antibody (N-term) - Additional Information

Gene ID 54708

Other Names

E3 ubiquitin-protein ligase MARCH5, 632-, Membrane-associated RING finger protein 5, Membrane-associated RING-CH protein V, MARCH-V, Mitochondrial ubiquitin ligase, MITOL, RING finger protein 153, MARCH5, RNF153

Target/Specificity

This MARCH5 antibody is generated from rabbits immunized with a KLH conjugated synthetic peptide between 4-32 amino acids from the N-terminal region of human MARCH5.

Dilution

WB~~1:1000
IHC-P-Leica~~1:500

Format

Purified polyclonal antibody supplied in PBS with 0.09% (W/V) sodium azide. This antibody is purified through a protein A column, followed by peptide affinity purification.

Storage

Maintain refrigerated at 2-8°C for up to 2 weeks. For long term storage store at -20°C in small aliquots to prevent freeze-thaw cycles.

Precautions

MARCH5 Antibody (N-term) is for research use only and not for use in diagnostic or therapeutic procedures.

MARCH5 Antibody (N-term) - Protein Information

Name MARCHF5 ([HGNC:26025](#))

Synonyms MARCH5, RNF153

Function Mitochondrial E3 ubiquitin-protein ligase that plays a crucial role in the control of mitochondrial morphology by acting as a positive regulator of mitochondrial fission. May play a role in the prevention of cell senescence acting as a regulator of mitochondrial quality control. Promotes ubiquitination of FIS1, DNM1L and MFN1.

Cellular Location

Mitochondrion outer membrane; Multi-pass membrane protein. Endoplasmic reticulum membrane; Multi-pass membrane protein. Note=Authors show that the protein can be detected in endoplasmic reticulum (PubMed:14722266). Authors (PubMed:16874301) show its presence only in mitochondria (PubMed:16874301)

Tissue Location

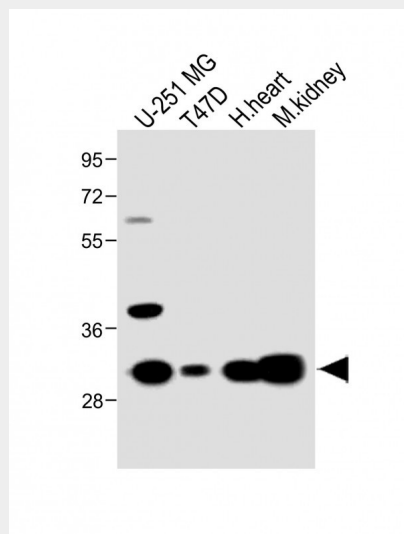
Expressed in brain, heart, liver, lung, spleen, stomach, testis, skeletal and muscle.

MARCH5 Antibody (N-term) - Protocols

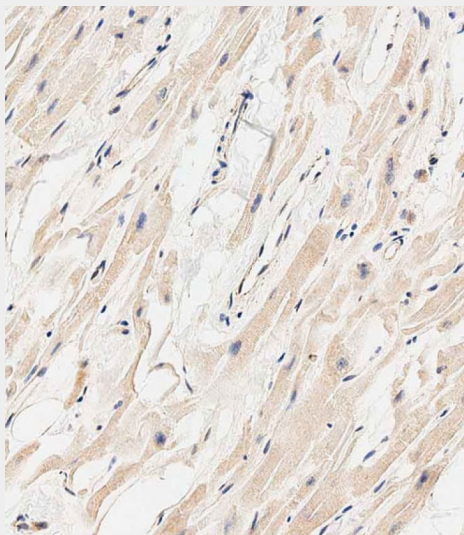
Provided below are standard protocols that you may find useful for product applications.

- [Western Blot](#)
- [Blocking Peptides](#)
- [Dot Blot](#)
- [Immunohistochemistry](#)
- [Immunofluorescence](#)
- [Immunoprecipitation](#)
- [Flow Cytometry](#)
- [Cell Culture](#)

MARCH5 Antibody (N-term) - Images



All lanes : Anti-MARCH5 Antibody (N-term) at 1:1000 dilution Lane 1: U-251 MG whole cell lysate Lane 2: T47D whole cell lysate Lane 3: Human heart lysate Lane 4: Mouse kidney lysate Lysates/proteins at 20 µg per lane. Secondary Goat Anti-Rabbit IgG, (H+L), Peroxidase conjugated at 1/10000 dilution. Predicted band size : 31 kDa Blocking/Dilution buffer: 5% NFDM/TBST.



Immunohistochemical analysis of paraffin-embedded human heart tissue using AP5677A performed on the Leica® BOND RXm. Tissue was fixed with formaldehyde at room temperature, antigen retrieval was by heat mediation with a EDTA buffer (pH9. 0). Samples were incubated with primary antibody(1:500) for 1 hours at room temperature. A undiluted biotinylated CRF Anti-Polyvalent HRP Polymer antibody was used as the secondary antibody.

MARCH5 Antibody (N-term) - Background

MARCH5 is a ubiquitin ligase of the mitochondrial outer membrane that plays a role in the control of mitochondrial morphology by regulating mitofusin-2 (MFN2; MIM 608507) and DRP1 (DNM1L; MIM 603850) (Nakamura et al., 2006 [PubMed 16936636]).

MARCH5 Antibody (N-term) - References

Yonashiro, R., et al. Mol. Biol. Cell 20(21):4524-4530(2009) Karbowski, M., et al. J. Cell Biol. 178(1):71-84(2007) Nakamura, N., et al. EMBO Rep. 7(10):1019-1022(2006)