

**CALCR Antibody (C-term)**  
**Affinity Purified Rabbit Polyclonal Antibody (Pab)**  
**Catalog # AP5688b****Specification**

---

**CALCR Antibody (C-term) - Product Information**

Application	IF, WB, FC,E
Primary Accession	<a href="#">P30988</a>
Other Accession	<a href="#">NP_001733.1</a>
Reactivity	Human
Host	Rabbit
Clonality	Polyclonal
Isotype	Rabbit IgG
Antigen Region	465-494

**CALCR Antibody (C-term) - Additional Information****Gene ID** 799**Other Names**

Calcitonin receptor, CT-R, CALCR

**Target/Specificity**

This CALCR antibody is generated from rabbits immunized with a KLH conjugated synthetic peptide between 444-474 amino acids of human CALCR.

**Dilution**

IF~~1:10~50

WB~~1:1000

FC~~1:10~50

**Format**

Purified polyclonal antibody supplied in PBS with 0.09% (W/V) sodium azide. This antibody is purified through a protein A column, followed by peptide affinity purification.

**Storage**

Maintain refrigerated at 2-8°C for up to 2 weeks. For long term storage store at -20°C in small aliquots to prevent freeze-thaw cycles.

**Precautions**

CALCR Antibody (C-term) is for research use only and not for use in diagnostic or therapeutic procedures.

**CALCR Antibody (C-term) - Protein Information****Name** CALCR ([HGNC:1440](#))**Function** This is a receptor for calcitonin. The activity of this receptor is mediated by G proteins

which activate adenylyl cyclase. The calcitonin receptor is thought to couple to the heterotrimeric guanosine triphosphate-binding protein that is sensitive to cholera toxin.

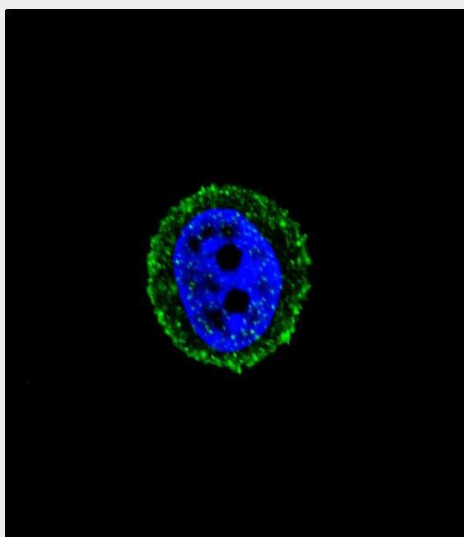
**Cellular Location**

Cell membrane; Multi-pass membrane protein.

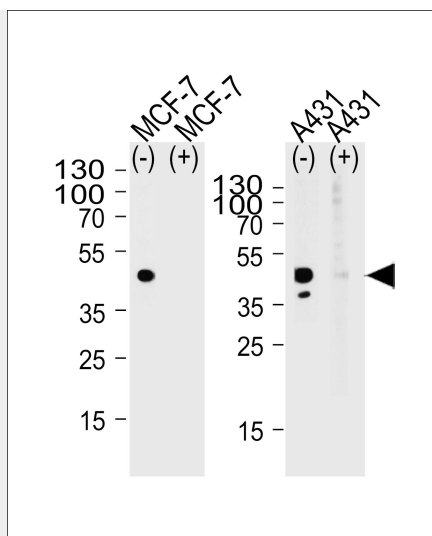
**CALCR Antibody (C-term) - Protocols**

Provided below are standard protocols that you may find useful for product applications.

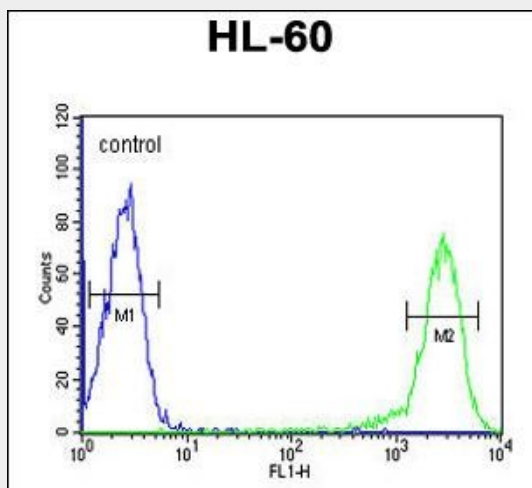
- [Western Blot](#)
- [Blocking Peptides](#)
- [Dot Blot](#)
- [Immunohistochemistry](#)
- [Immunofluorescence](#)
- [Immunoprecipitation](#)
- [Flow Cytometry](#)
- [Cell Culture](#)

**CALCR Antibody (C-term) - Images**

Confocal immunofluorescent analysis of CALCR Antibody (C-term)(Cat#AP5688b) with MCF-7 cell followed by Alexa Fluor® 488-conjugated goat anti-rabbit IgG (green). DAPI was used to stain the cell nuclear (blue).



Western blot analysis of lysate from MCF-7, A431 cell line, using CALCR Antibody (C-term)(Cat. #AP5688b) with(+) or without(-) peptides. AP5688b was diluted at 1:1000 at each lane. A goat anti-rabbit(HRP) at 1:5000 dilution was used as the secondary antibody. Lysate at 35ug per lane.



CALCR Antibody (C-term) (Cat. #AP5688b) flow cytometric analysis of HL-60 cells (right histogram) compared to a negative control cell (left histogram).FITC-conjugated goat-anti-rabbit secondary antibodies were used for the analysis.

### **CALCR Antibody (C-term) - Background**

CALCR is a high affinity receptor for the peptide hormone calcitonin and belongs to a subfamily of seven transmembrane-spanning G protein-coupled receptors. The encoded protein is involved in maintaining calcium homeostasis and in regulating osteoclast-mediated bone resorption. Polymorphisms in this gene have been associated with variations in bone mineral density and onset of osteoporosis.

### **CALCR Antibody (C-term) - References**

Nussenzveig, D.R., et al. Endocrinology 136(5):2047-2051(1995) Nakamura, M., et al. Biochem. Biophys. Res. Commun. 209(2):744-751(1995) Egerton, M., et al. J. Mol. Endocrinol. 14(2):179-189(1995) Gorn, A.H., et al. J. Clin. Invest. 90(5):1726-1735(1992)