

**RCN3 Antibody (Center)**  
**Affinity Purified Rabbit Polyclonal Antibody (Pab)**  
**Catalog # AP5788c****Specification**

---

**RCN3 Antibody (Center) - Product Information**

Application	WB, FC,E
Primary Accession	<a href="#">Q96D15</a>
Other Accession	<a href="#">Q8BH97</a> , <a href="#">Q2KJ39</a> , <a href="#">NP_065701.2</a> , <a href="#">I6L9G5</a>
Reactivity	Human, Mouse
Predicted	Bovine, Rat
Host	Rabbit
Clonality	Polyclonal
Isotype	Rabbit IgG
Calculated MW	37493
Antigen Region	134-163

**RCN3 Antibody (Center) - Additional Information****Gene ID** 57333**Other Names**

Reticulocalbin-3, EF-hand calcium-binding protein RLP49, RCN3

**Target/Specificity**

This RCN3 antibody is generated from rabbits immunized with a KLH conjugated synthetic peptide between 134-163 amino acids from the Central region of human RCN3.

**Dilution**

WB~~1:2000

FC~~1:10~50

**Format**

Purified polyclonal antibody supplied in PBS with 0.09% (W/V) sodium azide. This antibody is purified through a protein A column, followed by peptide affinity purification.

**Storage**

Maintain refrigerated at 2-8°C for up to 2 weeks. For long term storage store at -20°C in small aliquots to prevent freeze-thaw cycles.

**Precautions**

RCN3 Antibody (Center) is for research use only and not for use in diagnostic or therapeutic procedures.

**RCN3 Antibody (Center) - Protein Information****Name** RCN3 ([HGNC:21145](#))

**Function** Probable molecular chaperone assisting protein biosynthesis and transport in the endoplasmic reticulum (PubMed:[16433634](#), PubMed:[28939891](#)). Required for the proper biosynthesis and transport of pulmonary surfactant-associated protein A/SP-A, pulmonary surfactant-associated protein D/SP-D and the lipid transporter ABCA3 (By similarity). By regulating both the proper expression and the degradation through the endoplasmic reticulum-associated protein degradation pathway of these proteins plays a crucial role in pulmonary surfactant homeostasis (By similarity). Has an anti-fibrotic activity by negatively regulating the secretion of type I and type III collagens (PubMed:[28939891](#)). This calcium-binding protein also transiently associates with immature PCSK6 and regulates its secretion (PubMed:[16433634](#)).

#### Cellular Location

Endoplasmic reticulum lumen

#### Tissue Location

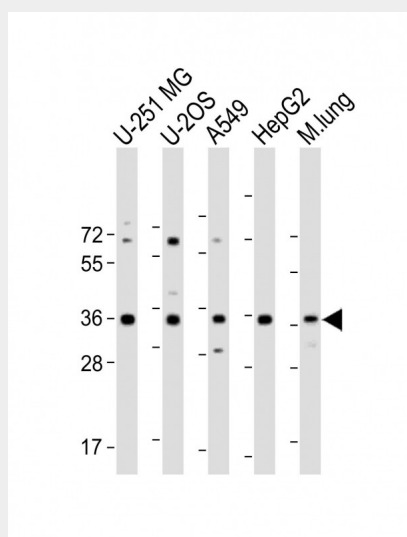
Widely expressed..

### RCN3 Antibody (Center) - Protocols

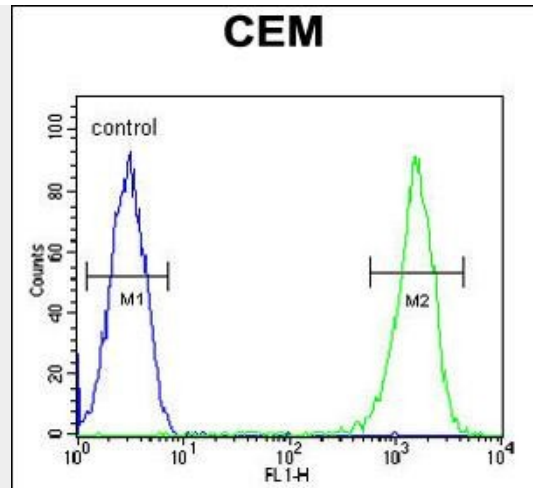
Provided below are standard protocols that you may find useful for product applications.

- [Western Blot](#)
- [Blocking Peptides](#)
- [Dot Blot](#)
- [Immunohistochemistry](#)
- [Immunofluorescence](#)
- [Immunoprecipitation](#)
- [Flow Cytometry](#)
- [Cell Culture](#)

### RCN3 Antibody (Center) - Images



All lanes : Anti-RCN3 Antibody (Center) at 1:2000 dilution Lane 1: U-251 MG whole cell lysate Lane 2: U-2OS whole cell lysate Lane 3: A549 whole cell lysate Lane 4: HepG2 whole cell lysate Lane 5: Mouse lung lysate Lysates/proteins at 20 µg per lane. Secondary Goat Anti-Rabbit IgG, (H+L), Peroxidase conjugated at 1/10000 dilution. Predicted band size : 37 kDa Blocking/Dilution buffer: 5% NFD/MTBST.



RCN3 Antibody (Center) (Cat. #AP5788c) flow cytometric analysis of CEM cells (right histogram) compared to a negative control cell (left histogram). FITC-conjugated goat-anti-rabbit secondary antibodies were used for the analysis.

#### **RCN3 Antibody (Center) - Background**

Calcipressin 3 inhibits calcineurin dependent transcriptional responses by binding to the catalytic domain of calcineurin A, and may play a role during central nervous system development. Highest expression occurs in heart, skeletal muscle kidney, liver and peripheral blood leukocytes.

#### **RCN3 Antibody (Center) - References**

Tsuji, A., et al. Biochem. J. 396(1):51-59(2006)  
Clark, H.F., et al. Genome Res. 13(10):2265-2270(2003)  
Hu, R.M., et al. Proc. Natl. Acad. Sci. U.S.A. 97(17):9543-9548(2000)

#### **RCN3 Antibody (Center) - Citations**

- [Reticulocalbin 3 deficiency in alveolar epithelium attenuated LPS-induced ALI via NFκB signaling](#)