

LSM4 Antibody (Center)
Affinity Purified Rabbit Polyclonal Antibody (Pab)
Catalog # AP5835c

Specification

LSM4 Antibody (Center) - Product Information

| | |
|-------------------|---|
| Application | WB,E |
| Primary Accession | O9Y4Z0 |
| Other Accession | O9OXA5 , O3ZBK6 , NP_036453.1 |
| Reactivity | Human, Mouse |
| Predicted | Bovine |
| Host | Rabbit |
| Clonality | Polyclonal |
| Isotype | Rabbit IgG |
| Calculated MW | 15350 |
| Antigen Region | 47-74 |

LSM4 Antibody (Center) - Additional Information

Gene ID 25804

Other Names

U6 snRNA-associated Sm-like protein LSm4, Glycine-rich protein, GRP, LSM4

Target/Specificity

This LSM4 antibody is generated from rabbits immunized with a KLH conjugated synthetic peptide between 47-74 amino acids from the Central region of human LSM4.

Dilution

WB~~1:1000

Format

Purified polyclonal antibody supplied in PBS with 0.09% (W/V) sodium azide. This antibody is purified through a protein A column, followed by peptide affinity purification.

Storage

Maintain refrigerated at 2-8°C for up to 2 weeks. For long term storage store at -20°C in small aliquots to prevent freeze-thaw cycles.

Precautions

LSM4 Antibody (Center) is for research use only and not for use in diagnostic or therapeutic procedures.

LSM4 Antibody (Center) - Protein Information

Name LSM4

Function Plays a role in pre-mRNA splicing as component of the U4/U6- U5 tri-snRNP complex that

is involved in spliceosome assembly, and as component of the precatalytic spliceosome (spliceosome B complex) (PubMed:[28781166](#)). The heptameric LSM2-8 complex binds specifically to the 3'-terminal U-tract of U6 snRNA (PubMed:[10523320](#)).

Cellular Location

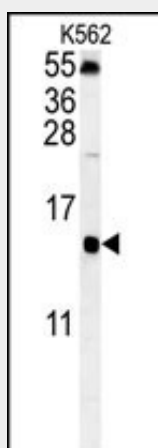
Nucleus

LSM4 Antibody (Center) - Protocols

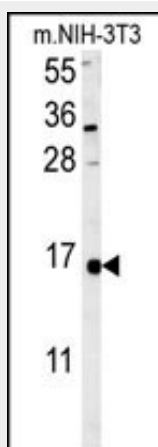
Provided below are standard protocols that you may find useful for product applications.

- [Western Blot](#)
- [Blocking Peptides](#)
- [Dot Blot](#)
- [Immunohistochemistry](#)
- [Immunofluorescence](#)
- [Immunoprecipitation](#)
- [Flow Cytometry](#)
- [Cell Culture](#)

LSM4 Antibody (Center) - Images



LSM4 Antibody (Center) (Cat. #AP5835c) western blot analysis in K562 cell line lysates (35ug/lane). This demonstrates the LSM4 antibody detected the LSM4 protein (arrow).



LSM4 Antibody (Center) (Cat. #AP5835c) western blot analysis in mouse NIH-3T3 cell line lysates (35ug/lane). This demonstrates the LSM4 antibody detected the LSM4 protein (arrow).