

**LRRC52 Antibody (C-term)**  
**Affinity Purified Rabbit Polyclonal Antibody (Pab)**  
**Catalog # AP5857b****Specification**

---

**LRRC52 Antibody (C-term) - Product Information**

Application	WB,E
Primary Accession	<a href="#">Q8N7C0</a>
Other Accession	<a href="#">NP_001005214.2</a>
Reactivity	Human
Host	Rabbit
Clonality	Polyclonal
Isotype	Rabbit IgG
Calculated MW	35126
Antigen Region	267-296

**LRRC52 Antibody (C-term) - Additional Information****Gene ID** 440699**Other Names**

Leucine-rich repeat-containing protein 52, BK channel auxiliary gamma subunit LRRC52, LRRC52

**Target/Specificity**

This LRRC52 antibody is generated from rabbits immunized with a KLH conjugated synthetic peptide between 267-296 amino acids from the C-terminal region of human LRRC52.

**Dilution**

WB~~1:1000

**Format**

Purified polyclonal antibody supplied in PBS with 0.09% (W/V) sodium azide. This antibody is purified through a protein A column, followed by peptide affinity purification.

**Storage**

Maintain refrigerated at 2-8°C for up to 2 weeks. For long term storage store at -20°C in small aliquots to prevent freeze-thaw cycles.

**Precautions**

LRRC52 Antibody (C-term) is for research use only and not for use in diagnostic or therapeutic procedures.

**LRRC52 Antibody (C-term) - Protein Information****Name** LRRC52

**Function** Auxiliary protein of the large-conductance, voltage and calcium-activated potassium channel (BK alpha). Modulates gating properties by producing a marked shift in the BK channel's

voltage dependence of activation in the hyperpolarizing direction, and in the absence of calcium. KCNU1 channel auxiliary protein. May modulate KCNU1 gating properties.

**Cellular Location**

Cell membrane; Single-pass membrane protein. Note=Expression at the cell surface may require the presence of KCNU1

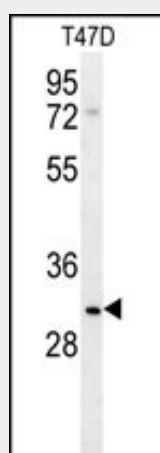
**Tissue Location**

Mainly expressed in testis and skeletal muscle.

**LRRC52 Antibody (C-term) - Protocols**

Provided below are standard protocols that you may find useful for product applications.

- [Western Blot](#)
- [Blocking Peptides](#)
- [Dot Blot](#)
- [Immunohistochemistry](#)
- [Immunofluorescence](#)
- [Immunoprecipitation](#)
- [Flow Cytometry](#)
- [Cell Culture](#)

**LRRC52 Antibody (C-term) - Images**

LRRC52 Antibody (C-term) (Cat. #AP5857b) western blot analysis in T47D cell line lysates (35ug/lane). This demonstrates the LRRC52 antibody detected the LRRC52 protein (arrow).