

**ADCY10 Antibody (Center)**  
**Affinity Purified Rabbit Polyclonal Antibody (Pab)**  
**Catalog # AP5862c****Specification**

---

**ADCY10 Antibody (Center) - Product Information**

|                   |  |
|-------------------|--|
| Application       | WB, FC,E   |
| Primary Accession | <a href="#">Q96PN6</a>                                       |
| Other Accession   | <a href="#">NP_001161221.1</a> , <a href="#">NP_060887.2</a> |
| Reactivity        | Human  |
| Host              | Rabbit   |
| Clonality         | Polyclonal   |
| Isotype           | Rabbit IgG   |
| Calculated MW     | 187149   |
| Antigen Region    | 557-583  |

**ADCY10 Antibody (Center) - Additional Information****Gene ID** 55811**Other Names**

Adenylate cyclase type 10, AH-related protein, Adenylate cyclase homolog, Germ cell soluble adenylyl cyclase, hsAC, sAC, Testicular soluble adenylyl cyclase, ADCY10, SAC

**Target/Specificity**

This ADCY10 antibody is generated from rabbits immunized with a KLH conjugated synthetic peptide between 557-583 amino acids from the Central region of human ADCY10.

**Dilution**

WB~~1:1000  
FC~~1:10~50

**Format**

Purified polyclonal antibody supplied in PBS with 0.09% (W/V) sodium azide. This antibody is purified through a protein A column, followed by peptide affinity purification.

**Storage**

Maintain refrigerated at 2-8°C for up to 2 weeks. For long term storage store at -20°C in small aliquots to prevent freeze-thaw cycles.

**Precautions**

ADCY10 Antibody (Center) is for research use only and not for use in diagnostic or therapeutic procedures.

**ADCY10 Antibody (Center) - Protein Information****Name** ADCY10

## Synonyms SAC

**Function** Catalyzes the formation of the signaling molecule cAMP (PubMed:[12609998](#), PubMed:[15659711](#), PubMed:[24616449](#), PubMed:[25040695](#), PubMed:[24567411](#)). May function as sensor that mediates responses to changes in cellular bicarbonate and CO<sub>2</sub> levels (PubMed:[15659711](#), PubMed:[17591988](#)). Has a critical role in mammalian spermatogenesis by producing the cAMP which regulates cAMP-responsive nuclear factors indispensable for sperm maturation in the epididymis. Induces capacitation, the maturational process that sperm undergo prior to fertilization (By similarity). Involved in ciliary beat regulation (PubMed:[17591988](#)).

## Cellular Location

Cell membrane; Peripheral membrane protein; Cytoplasmic side. Cytoplasm, cytoskeleton. Cytoplasm, perinuclear region. Nucleus. Cell projection, cilium. Cytoplasm Mitochondrion. Note=Distributed to subcellular compartments containing cAMP targets. Found as a plasma membrane-associated protein, protein concentrated in the perinuclear region and protein colocalized with actin or tubulin

## Tissue Location

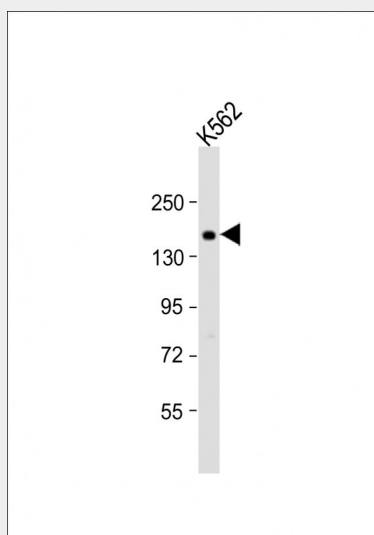
Detected in airway epithelial cells and testis (at protein level) (PubMed:[17591988](#)). Weakly expressed in multiple tissues Expressed in brain, heart, kidney, liver, lung, pancreas, peripheral blood leukocytes, placenta, skeletal muscle, stomach, thymus, airway epithelial cells, duodenum, jejunum and ileum. Very low level of expression in bone.

## ADCY10 Antibody (Center) - Protocols

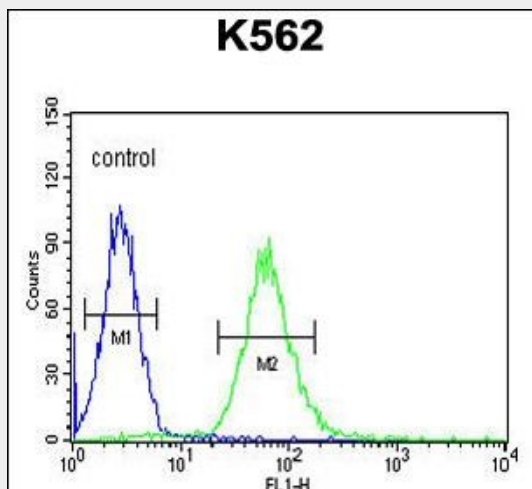
Provided below are standard protocols that you may find useful for product applications.

- [Western Blot](#)
- [Blocking Peptides](#)
- [Dot Blot](#)
- [Immunohistochemistry](#)
- [Immunofluorescence](#)
- [Immunoprecipitation](#)
- [Flow Cytometry](#)
- [Cell Culture](#)

## ADCY10 Antibody (Center) - Images



Anti-ADCY10 Antibody (Center) at 1:1000 dilution + K562 whole cell lysate Lysates/proteins at 20 µg per lane. Secondary Goat Anti-Rabbit IgG, (H+L), Peroxidase conjugated at 1/10000 dilution. Predicted band size : 187 kDa Blocking/Dilution buffer: 5% NFDM/TBST.



ADCY10 Antibody (Center) (Cat. #AP5862c) flow cytometric analysis of K562 cells (right histogram) compared to a negative control cell (left histogram). FITC-conjugated goat-anti-rabbit secondary antibodies were used for the analysis.

#### **ADCY10 Antibody (Center) - Citations**

- [Sodium-hydrogen exchanger NHA1 and NHA2 control sperm motility and male fertility.](#)