

**SLC12A5 Antibody (N-term)**  
**Affinity Purified Rabbit Polyclonal Antibody (Pab)**  
**Catalog # AP5876a**

**Specification**

---

**SLC12A5 Antibody (N-term) - Product Information**

|                   |  |
|-------------------|--|
| Application       | WB, IHC-P,E  |
| Primary Accession | <a href="#">Q9H2X9</a>                                       |
| Other Accession   | <a href="#">NP_065759.1</a> , <a href="#">NP_001128243.1</a> |
| Reactivity        | Human  |
| Host              | Rabbit   |
| Clonality         | Polyclonal   |
| Isotype           | Rabbit IgG   |
| Calculated MW     | 126184   |
| Antigen Region    | 5-33   |

**SLC12A5 Antibody (N-term) - Additional Information**

**Gene ID** 57468

**Other Names**

Solute carrier family 12 member 5, Electroneutral potassium-chloride cotransporter 2, K-Cl cotransporter 2, hKCC2, Neuronal K-Cl cotransporter, SLC12A5, KCC2, KIAA1176

**Target/Specificity**

This SLC12A5 antibody is generated from rabbits immunized with a KLH conjugated synthetic peptide between 5-33 amino acids from the N-terminal region of human SLC12A5.

**Dilution**

WB~~1:1000  
IHC-P~~1:50~100

**Format**

Purified polyclonal antibody supplied in PBS with 0.09% (W/V) sodium azide. This antibody is purified through a protein A column, followed by peptide affinity purification.

**Storage**

Maintain refrigerated at 2-8°C for up to 2 weeks. For long term storage store at -20°C in small aliquots to prevent freeze-thaw cycles.

**Precautions**

SLC12A5 Antibody (N-term) is for research use only and not for use in diagnostic or therapeutic procedures.

**SLC12A5 Antibody (N-term) - Protein Information**

**Name** SLC12A5 ([HGNC:13818](#))

**Function** Mediates electroneutral potassium-chloride cotransport in mature neurons and is required for neuronal Cl(-) homeostasis (PubMed:[12106695](#)). As major extruder of intracellular chloride, it establishes the low neuronal Cl(-) levels required for chloride influx after binding of GABA-A and glycine to their receptors, with subsequent hyperpolarization and neuronal inhibition (By similarity). Involved in the regulation of dendritic spine formation and maturation (PubMed:[24668262](#)).

#### Cellular Location

Cell membrane {ECO:0000250|UniProtKB:Q91V14}; Multi-pass membrane protein {ECO:0000250|UniProtKB:Q91V14}. Cell projection, dendrite {ECO:0000250|UniProtKB:Q91V14}. Note=Detected on dendrites, but not on axons of spinal cord neurons and at GPHN-positive inhibitory synapses. {ECO:0000250|UniProtKB:Q91V14}

#### Tissue Location

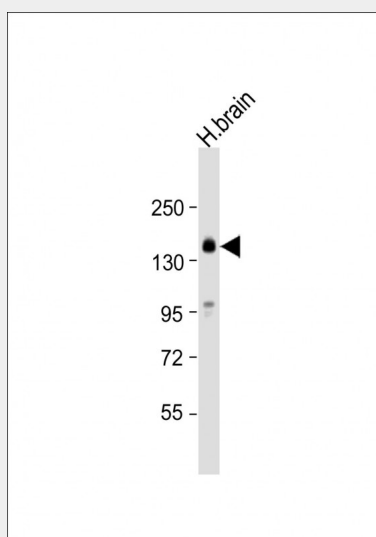
Brain specific. Detected in neuronal cells.

### SLC12A5 Antibody (N-term) - Protocols

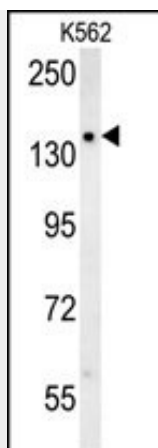
Provided below are standard protocols that you may find useful for product applications.

- [Western Blot](#)
- [Blocking Peptides](#)
- [Dot Blot](#)
- [Immunohistochemistry](#)
- [Immunofluorescence](#)
- [Immunoprecipitation](#)
- [Flow Cytometry](#)
- [Cell Culture](#)

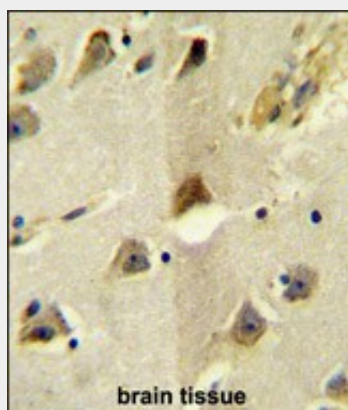
### SLC12A5 Antibody (N-term) - Images



Anti-SLC12A5 Antibody (N-term) at 1:4000 dilution + human brain lysate Lysates/proteins at 20 µg per lane. Secondary Goat Anti-Rabbit IgG, (H+L), Peroxidase conjugated at 1/10000 dilution. Predicted band size : 126 kDa Blocking/Dilution buffer: 5% NFDM/TBST.



SLC12A5 Antibody (N-term) (Cat. #AP5876a) western blot analysis in K562 cell line lysates (35ug/lane). This demonstrates the SLC12A5 antibody detected the SLC12A5 protein (arrow).



SLC12A5 Antibody (N-term) (Cat. #AP5876a) immunohistochemistry analysis in formalin fixed and paraffin embedded human brain tissue followed by peroxidase conjugation of the secondary antibody and DAB staining. This data demonstrates the use of the SLC12A5 Antibody (N-term) for immunohistochemistry. Clinical relevance has not been evaluated.