

SAMSN1 Antibody (Center)
Affinity Purified Rabbit Polyclonal Antibody (Pab)
Catalog # AP5877c

Specification

SAMSN1 Antibody (Center) - Product Information

Application	WB, IHC-P, FC,E
Primary Accession	O9NSI8
Other Accession	NP_071419.3
Reactivity	Human
Host	Rabbit
Clonality	Polyclonal
Isotype	Rabbit IgG
Calculated MW	41708
Antigen Region	255-283

SAMSN1 Antibody (Center) - Additional Information

Gene ID 64092

Other Names

SAM domain-containing protein SAMSN-1, Hematopoietic adaptor containing SH3 and SAM domains 1, Nash1, SAM domain, SH3 domain and nuclear localization signals protein 1, SH3-SAM adaptor protein, SAMSN1, HACSI

Target/Specificity

This SAMSN1 antibody is generated from rabbits immunized with a KLH conjugated synthetic peptide between 255-283 amino acids from the Central region of human SAMSN1.

Dilution

WB~~1:1000
IHC-P~~1:50~100
FC~~1:10~50

Format

Purified polyclonal antibody supplied in PBS with 0.09% (W/V) sodium azide. This antibody is purified through a protein A column, followed by peptide affinity purification.

Storage

Maintain refrigerated at 2-8°C for up to 2 weeks. For long term storage store at -20°C in small aliquots to prevent freeze-thaw cycles.

Precautions

SAMSN1 Antibody (Center) is for research use only and not for use in diagnostic or therapeutic procedures.

SAMSN1 Antibody (Center) - Protein Information

Name SAMS1

Synonyms HAC1

Function Negative regulator of B-cell activation. Down-regulates cell proliferation (in vitro). Promotes RAC1-dependent membrane ruffle formation and reorganization of the actin cytoskeleton. Regulates cell spreading and cell polarization. Stimulates HDAC1 activity. Regulates LYN activity by modulating its tyrosine phosphorylation (By similarity).

Cellular Location

Nucleus. Cytoplasm. Cell projection, ruffle. Note=Shuttles between cytoplasm and nucleus. Colocalizes with the actin cytoskeleton and actin-rich membrane ruffles (By similarity).

Tissue Location

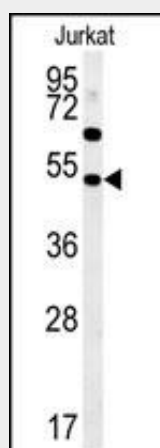
Detected in peripheral blood B-cells (at protein level). Detected in spleen, liver and peripheral blood

SAMS1 Antibody (Center) - Protocols

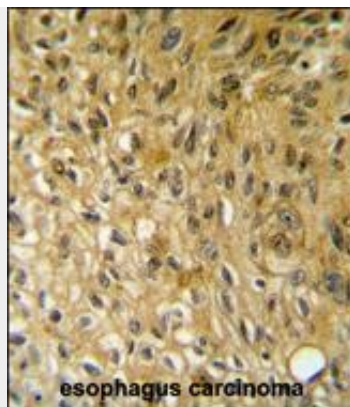
Provided below are standard protocols that you may find useful for product applications.

- [Western Blot](#)
- [Blocking Peptides](#)
- [Dot Blot](#)
- [Immunohistochemistry](#)
- [Immunofluorescence](#)
- [Immunoprecipitation](#)
- [Flow Cytometry](#)
- [Cell Culture](#)

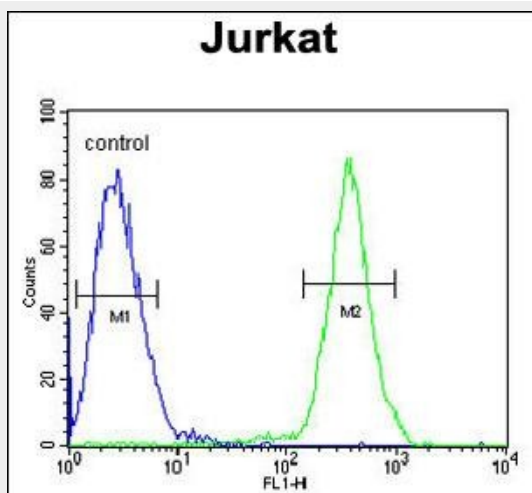
SAMS1 Antibody (Center) - Images



SAMS1 Antibody (Center) (Cat. #AP5877c) western blot analysis in Jurkat cell line lysates (35ug/lane). This demonstrates the SAMS1 antibody detected the SAMS1 protein (arrow).



SAMSN1 Antibody (Center) (Cat. #AP5877c) immunohistochemistry analysis in formalin fixed and paraffin embedded human esophagus carcinoma followed by peroxidase conjugation of the secondary antibody and DAB staining. This data demonstrates the use of the SAMSN1 Antibody (Center) for immunohistochemistry. Clinical relevance has not been evaluated.



SAMSN1 Antibody (Center) (Cat. #AP5877c) flow cytometric analysis of Jurkat cells (right histogram) compared to a negative control cell (left histogram). FITC-conjugated goat-anti-rabbit secondary antibodies were used for the analysis.