

**TMUB1 Antibody (Center)**  
**Affinity Purified Rabbit Polyclonal Antibody (Pab)**  
**Catalog # AP5928c****Specification**

---

**TMUB1 Antibody (Center) - Product Information**

Application	WB, IHC-P,E
Primary Accession	<a href="#">Q9BVT8</a>
Other Accession	<a href="#">Q53A04</a> , <a href="#">NP_001129516.1</a> , <a href="#">NP_113622.1</a>
Reactivity	Human, Mouse
Predicted	Rat
Host	Rabbit
Clonality	Polyclonal
Isotype	Rabbit IgG
Calculated MW	26261
Antigen Region	112-141

**TMUB1 Antibody (Center) - Additional Information****Gene ID** 83590**Other Names**

Transmembrane and ubiquitin-like domain-containing protein 1, Dendritic cell-derived ubiquitin-like protein, DULP, Hepatocyte odd protein shuttling protein, Ubiquitin-like protein SB144, TMUB1, C7orf21, DULP, HOPS

**Target/Specificity**

This TMUB1 antibody is generated from rabbits immunized with a KLH conjugated synthetic peptide between 112-141 amino acids from the Central region of human TMUB1.

**Dilution**

WB~~1:1000  
IHC-P~~1:50~100

**Format**

Purified polyclonal antibody supplied in PBS with 0.09% (W/V) sodium azide. This antibody is purified through a protein A column, followed by peptide affinity purification.

**Storage**

Maintain refrigerated at 2-8°C for up to 2 weeks. For long term storage store at -20°C in small aliquots to prevent freeze-thaw cycles.

**Precautions**

TMUB1 Antibody (Center) is for research use only and not for use in diagnostic or therapeutic procedures.

**TMUB1 Antibody (Center) - Protein Information**

**Name** TMUB1**Synonyms** C7orf21, DULP, HOPS

**Function** Involved in sterol-regulated ubiquitination and degradation of HMG-CoA reductase HMGCR (PubMed:[21343306](#)). Involved in positive regulation of AMPA-selective glutamate receptor GRIA2 recycling to the cell surface (By similarity). Acts as a negative regulator of hepatocyte growth during regeneration (By similarity).

**Cellular Location**

Membrane {ECO:0000250|UniProtKB:Q9JMG3}; Multi-pass membrane protein {ECO:0000250|UniProtKB:Q9JMG3}. Postsynaptic cell membrane {ECO:0000250|UniProtKB:Q9JMG3}. Recycling endosome {ECO:0000250|UniProtKB:Q53AQ4}. Cytoplasm {ECO:0000250|UniProtKB:Q9JMG3}. Nucleus {ECO:0000250|UniProtKB:Q9JMG3} Nucleus, nucleolus {ECO:0000250|UniProtKB:Q9JMG3}

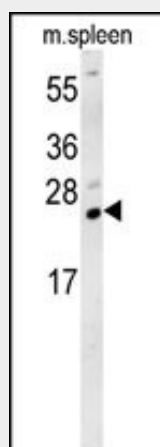
**Tissue Location**

Ubiquitously expressed with highest levels in mammary and thyroid glands, bone marrow and spleen; limited expression in cardiac, pancreatic and ovarian tissues

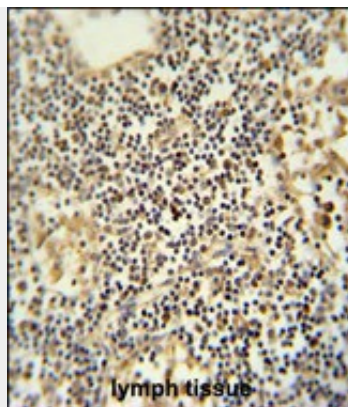
**TMUB1 Antibody (Center) - Protocols**

Provided below are standard protocols that you may find useful for product applications.

- [Western Blot](#)
- [Blocking Peptides](#)
- [Dot Blot](#)
- [Immunohistochemistry](#)
- [Immunofluorescence](#)
- [Immunoprecipitation](#)
- [Flow Cytometry](#)
- [Cell Culture](#)

**TMUB1 Antibody (Center) - Images**

TMUB1 Antibody (Center) (Cat. #AP5928c) western blot analysis in mouse spleen tissue lysates (15ug/lane). This demonstrates the TMUB1 antibody detected TMUB1 protein (arrow).



TMUB1 antibody (Center) (Cat. #AP5928c) immunohistochemistry analysis in formalin fixed and paraffin embedded human lymph tissue followed by peroxidase conjugation of the secondary antibody and DAB staining. This data demonstrates the use of the TMUB1 antibody (Center) for immunohistochemistry. Clinical relevance has not been evaluated.