

HTR3C Antibody (Center)
Affinity Purified Rabbit Polyclonal Antibody (Pab)
Catalog # AP5973c

Specification

HTR3C Antibody (Center) - Product Information

Application	WB,E
Primary Accession	Q8WXA8
Other Accession	NP_570126.2
Reactivity	Human
Host	Rabbit
Clonality	Polyclonal
Isotype	Rabbit IgG
Calculated MW	50220
Antigen Region	128-157

HTR3C Antibody (Center) - Additional Information

Gene ID 170572

Other Names

5-hydroxytryptamine receptor 3C, 5-HT3-C, 5-HT3C, Serotonin receptor 3C, HTR3C

Target/Specificity

This HTR3C antibody is generated from rabbits immunized with a KLH conjugated synthetic peptide between 128-157 amino acids from the Central region of human HTR3C.

Dilution

WB~~1:1000

Format

Purified polyclonal antibody supplied in PBS with 0.09% (W/V) sodium azide. This antibody is purified through a protein A column, followed by peptide affinity purification.

Storage

Maintain refrigerated at 2-8°C for up to 2 weeks. For long term storage store at -20°C in small aliquots to prevent freeze-thaw cycles.

Precautions

HTR3C Antibody (Center) is for research use only and not for use in diagnostic or therapeutic procedures.

HTR3C Antibody (Center) - Protein Information

Name HTR3C ([HGNC:24003](#))

Function Forms serotonin (5-hydroxytryptamine/5-HT3)-activated cation- selective channel complexes, which when activated cause fast, depolarizing responses in neurons.

Cellular Location

Postsynaptic cell membrane; Multi-pass membrane protein. Cell membrane; Multi-pass membrane protein. Note=Presumably retained within the endoplasmic reticulum unless complexed with HTR3A

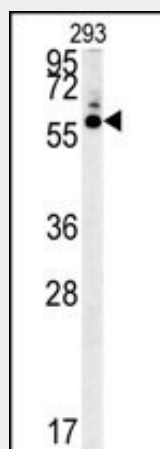
Tissue Location

Expressed in many tissues including adult brain, colon, intestine, lung, muscle and stomach as well as fetal colon and kidney.

HTR3C Antibody (Center) - Protocols

Provided below are standard protocols that you may find useful for product applications.

- [Western Blot](#)
- [Blocking Peptides](#)
- [Dot Blot](#)
- [Immunohistochemistry](#)
- [Immunofluorescence](#)
- [Immunoprecipitation](#)
- [Flow Cytometry](#)
- [Cell Culture](#)

HTR3C Antibody (Center) - Images

HTR3C Antibody (Center) (Cat. #AP5973c) western blot analysis in 293 cell line lysates (35ug/lane). This demonstrates the HTR3C antibody detected the HTR3C protein (arrow).