

**DDX47 Antibody (C-term)**  
**Affinity Purified Rabbit Polyclonal Antibody (Pab)**  
**Catalog # AP5989b****Specification**

---

**DDX47 Antibody (C-term) - Product Information**

Application	WB, FC,E
Primary Accession	<a href="#">O9H0S4</a>
Other Accession	<a href="#">O9CWX9</a> , <a href="#">Q29S22</a> , <a href="#">NP_057439.2</a> , <a href="#">NP_957518.1</a>
Reactivity	Human, Mouse
Predicted	Bovine
Host	Rabbit
Clonality	Polyclonal
Isotype	Rabbit IgG
Calculated MW	50647
Antigen Region	353-380

**DDX47 Antibody (C-term) - Additional Information****Gene ID** 51202**Other Names**

Probable ATP-dependent RNA helicase DDX47, DEAD box protein 47, DDX47

**Target/Specificity**

This DDX47 antibody is generated from rabbits immunized with a KLH conjugated synthetic peptide between 353-380 amino acids from the C-terminal region of human DDX47.

**Dilution**

WB~~1:1000

FC~~1:10~50

**Format**

Purified polyclonal antibody supplied in PBS with 0.09% (W/V) sodium azide. This antibody is purified through a protein A column, followed by peptide affinity purification.

**Storage**

Maintain refrigerated at 2-8°C for up to 2 weeks. For long term storage store at -20°C in small aliquots to prevent freeze-thaw cycles.

**Precautions**

DDX47 Antibody (C-term) is for research use only and not for use in diagnostic or therapeutic procedures.

**DDX47 Antibody (C-term) - Protein Information****Name** DDX47

**Function** Required for efficient ribosome biogenesis (By similarity). May have a role in mRNA splicing (PubMed:[16963496](#)). Involved in apoptosis (PubMed:[15977068](#)).

**Cellular Location**

Nucleus, nucleolus. Note=Localizes in the nucleolar- organizing region during ribosome biogenesis

**Tissue Location**

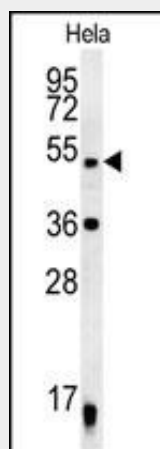
Expressed in skin, lung and breast. Also expressed in the brain.

**DDX47 Antibody (C-term) - Protocols**

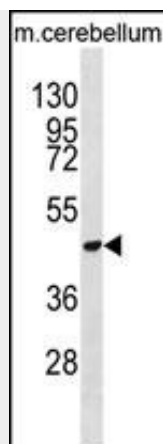
Provided below are standard protocols that you may find useful for product applications.

- [Western Blot](#)
- [Blocking Peptides](#)
- [Dot Blot](#)
- [Immunohistochemistry](#)
- [Immunofluorescence](#)
- [Immunoprecipitation](#)
- [Flow Cytometry](#)
- [Cell Culture](#)

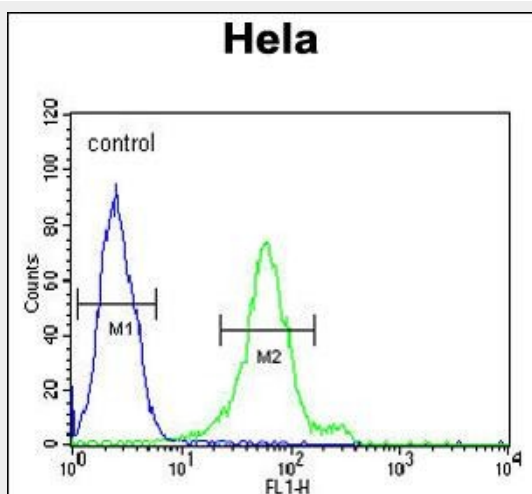
**DDX47 Antibody (C-term) - Images**



DDX47 Antibody (C-term) (Cat. #AP5989b) western blot analysis in HeLa cell line lysates (35ug/lane). This demonstrates the DDX47 antibody detected the DDX47 protein (arrow).



DDX47 Antibody (C-term) (Cat. #AP5989b) western blot analysis in mouse cerebellum tissue lysates (35ug/lane). This demonstrates the DDX47 antibody detected the DDX47 protein (arrow).



DDX47 Antibody (C-term) (Cat. #AP5989b) flow cytometric analysis of HeLa cells (right histogram) compared to a negative control cell (left histogram). FITC-conjugated goat-anti-rabbit secondary antibodies were used for the analysis.