

**FKBP8 Antibody (Center)**  
**Affinity Purified Rabbit Polyclonal Antibody (Pab)**  
**Catalog # AP5990c****Specification**

---

**FKBP8 Antibody (Center) - Product Information**

|                   |   |
|-------------------|---|
| Application       | WB,E  |
| Primary Accession | <a href="#">Q14318</a>  |
| Other Accession   | <a href="#">Q3B7U9</a> , <a href="#">O35465</a> , <a href="#">NP_036313.3</a> |
| Reactivity        | Human   |
| Predicted         | Mouse, Rat  |
| Host              | Rabbit  |
| Clonality         | Polyclonal  |
| Isotype           | Rabbit IgG  |
| Calculated MW     | 44562   |
| Antigen Region    | 199-226   |

**FKBP8 Antibody (Center) - Additional Information****Gene ID** 23770**Other Names**

Peptidyl-prolyl cis-trans isomerase FKBP8, PPIase FKBP8, 38 kDa FK506-binding protein, 38 kDa FKBP, FKBP-38, hFKBP38, FK506-binding protein 8, FKBP-8, FKBPR38, Rotamase, FKBP8, FKBP38

**Target/Specificity**

This FKBP8 antibody is generated from rabbits immunized with a KLH conjugated synthetic peptide between 199-226 amino acids from the Central region of human FKBP8.

**Dilution**

WB~~1:1000

**Format**

Purified polyclonal antibody supplied in PBS with 0.09% (W/V) sodium azide. This antibody is purified through a protein A column, followed by peptide affinity purification.

**Storage**

Maintain refrigerated at 2-8°C for up to 2 weeks. For long term storage store at -20°C in small aliquots to prevent freeze-thaw cycles.

**Precautions**

FKBP8 Antibody (Center) is for research use only and not for use in diagnostic or therapeutic procedures.

**FKBP8 Antibody (Center) - Protein Information****Name** FKBP8

**Synonyms** FKBP38

**Function** Constitutively inactive PPIase, which becomes active when bound to calmodulin and calcium. Seems to act as a chaperone for BCL2, targets it to the mitochondria and modulates its phosphorylation state. The BCL2/FKBP8/calmodulin/calcium complex probably interferes with the binding of BCL2 to its targets. The active form of FKBP8 may therefore play a role in the regulation of apoptosis. Involved in the inhibition of viral infection by influenza A viruses (IAV) (PubMed:[28169297](#)).

**Cellular Location**

Mitochondrion. Mitochondrion membrane; Single-pass membrane protein; Cytoplasmic side [Isoform 3]: Mitochondrion membrane; Single-pass membrane protein; Cytoplasmic side

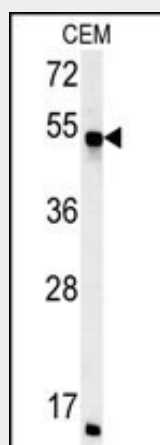
**Tissue Location**

Widely expressed. Highest levels seen in the brain. Highly abundant in the retina.

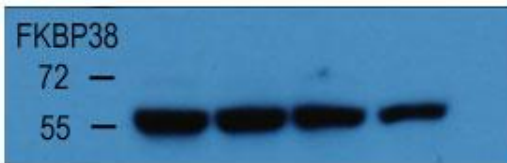
**FKBP8 Antibody (Center) - Protocols**

Provided below are standard protocols that you may find useful for product applications.

- [Western Blot](#)
- [Blocking Peptides](#)
- [Dot Blot](#)
- [Immunohistochemistry](#)
- [Immunofluorescence](#)
- [Immunoprecipitation](#)
- [Flow Cytometry](#)
- [Cell Culture](#)

**FKBP8 Antibody (Center) - Images**

FKBP8 Antibody (Center) (Cat. #AP5990c) western blot analysis in CEM cell line lysates (35ug/lane). This demonstrates the FKBP8 antibody detected the FKBP8 protein (arrow).

**HepG2 CELL LINE**
**DC120    0    5    10    20**


With HepG2 cell line lysate, the resolved proteins were electrophoretically transferred to PVDF membrane and incubated sequentially with primary antibody FKBP38 ( abgent, Cat. AP5990C, 1:1000, 4°C overnight ) and horseradish peroxidase-conjugated second antibody. After washing, the bound antibody complex was detected using an ECL chemiluminescence reagent and XAR film (Kodak).