

**HES1 Antibody (N-term T24)**  
**Purified Rabbit Polyclonal Antibody (Pab)**  
**Catalog # AP6276a****Specification**

---

**HES1 Antibody (N-term T24) - Product Information**

Application	IF, WB, FC,E
Primary Accession	<a href="#">Q14469</a>
Other Accession	<a href="#">Q04666</a> , <a href="#">P35428</a> , <a href="#">Q3ZBG4</a> , <a href="#">Q8AVU4</a> , <a href="#">Q6IRB2</a>
Reactivity	Human
Predicted	Xenopus, Bovine, Mouse, Rat
Host	Rabbit
Clonality	Polyclonal
Isotype	Rabbit IgG
Antigen Region	9-38

**HES1 Antibody (N-term T24) - Additional Information****Gene ID** 3280**Other Names**

Transcription factor HES-1, Class B basic helix-loop-helix protein 39, bHLHb39, Hairy and enhancer of split 1, Hairy homolog, Hairy-like protein, hHL, HES1, BHLHB39, HL, HRY

**Target/Specificity**

This HES1 antibody is generated from rabbits immunized with a KLH conjugated synthetic peptide between 9-38 amino acids from the N-terminal region of human HES1.

**Dilution**

IF~~1:10~50  
WB~~1:1000  
FC~~1:10~50

**Format**

Purified polyclonal antibody supplied in PBS with 0.09% (W/V) sodium azide. This antibody is prepared by Saturated Ammonium Sulfate (SAS) precipitation followed by dialysis against PBS.

**Storage**

Maintain refrigerated at 2-8°C for up to 2 weeks. For long term storage store at -20°C in small aliquots to prevent freeze-thaw cycles.

**Precautions**

HES1 Antibody (N-term T24) is for research use only and not for use in diagnostic or therapeutic procedures.

**HES1 Antibody (N-term T24) - Protein Information****Name** HES1

**Synonyms** BHLHB39, HL, HRY

**Function** Transcriptional repressor of genes that require a bHLH protein for their transcription. May act as a negative regulator of myogenesis by inhibiting the functions of MYOD1 and ASH1. Binds DNA on N-box motifs: 5'-CACNAG-3' with high affinity and on E-box motifs: 5'-CANNTG-3' with low affinity (By similarity). May play a role in a functional FA core complex response to DNA cross-link damage, being required for the stability and nuclear localization of FA core complex proteins, as well as for FANCD2 monoubiquitination in response to DNA damage.

**Cellular Location**

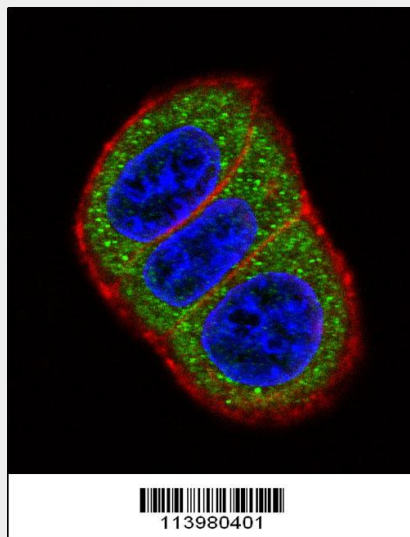
Nucleus.

**HES1 Antibody (N-term T24) - Protocols**

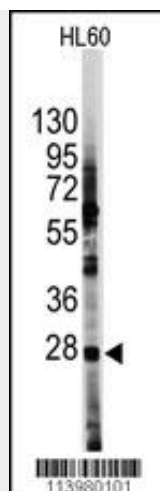
Provided below are standard protocols that you may find useful for product applications.

- [Western Blot](#)
- [Blocking Peptides](#)
- [Dot Blot](#)
- [Immunohistochemistry](#)
- [Immunofluorescence](#)
- [Immunoprecipitation](#)
- [Flow Cytometry](#)
- [Cell Culture](#)

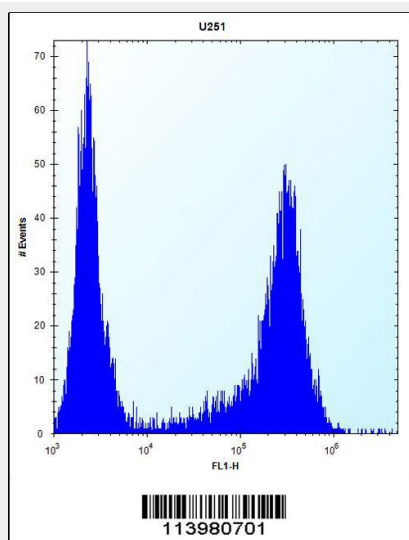
**HES1 Antibody (N-term T24) - Images**



Confocal immunofluorescent analysis of HES1 Antibody (N-term T24)(Cat#AP6276a) with HeLa cell followed by Alexa Fluor 488-conjugated goat anti-rabbit IgG (green). Actin filaments have been labeled with Alexa Fluor 555 phalloidin (red). DAPI was used to stain the cell nuclear (blue).



Western blot analysis of anti-HES1 Antibody (N-term T24) (RB13980) in HL60 cell line lysates (35ug/lane). HES1 (arrow) was detected using the purified Pab.



HES1 Antibody (N-term T24) (Cat. #AP6276a) flow cytometric analysis of U251 cells (right histogram) compared to a negative control cell (left histogram). FITC-conjugated goat-anti-rabbit secondary antibodies were used for the analysis.

### **HES1 Antibody (N-term T24) - Background**

HES1 belongs to the basic helix-loop-helix family of transcription factors. It is a transcriptional repressor of genes that require a bHLH protein for their transcription. HES1 has a particular type of basic domain that contains a helix interrupting protein that binds to the N-box rather than the canonical E-box.

### **HES1 Antibody (N-term T24) - References**

Liu, J., Int. J. Gynecol. Cancer 17 (6), 1293-1299 (2007)  
Karlsson, C., J. Orthop. Res. 25 (2), 152-163 (2007)