

GRB2 Antibody (Y209)
Affinity Purified Rabbit Polyclonal Antibody (Pab)
Catalog # AP6283a

Specification

GRB2 Antibody (Y209) - Product Information

Application	WB, IHC-P,E
Primary Accession	P62993
Other Accession	P62994 , Q60631 , Q07883 , Q6GPJ9 , P87379
Reactivity	Human
Predicted	Xenopus, Chicken, Mouse, Rat
Host	Rabbit
Clonality	Polyclonal
Isotype	Rabbit IgG
Calculated MW	25206
Antigen Region	187-216

GRB2 Antibody (Y209) - Additional Information

Gene ID 2885

Other Names

Growth factor receptor-bound protein 2, Adapter protein GRB2, Protein Ash, SH2/SH3 adapter GRB2, GRB2, ASH

Target/Specificity

This GRB2 antibody is generated from rabbits immunized with a KLH conjugated synthetic peptide between 187-216 amino acids from human GRB2.

Dilution

WB~~1:1000
IHC-P~~1:10~50

Format

Purified polyclonal antibody supplied in PBS with 0.09% (W/V) sodium azide. This antibody is purified through a protein A column, followed by peptide affinity purification.

Storage

Maintain refrigerated at 2-8°C for up to 2 weeks. For long term storage store at -20°C in small aliquots to prevent freeze-thaw cycles.

Precautions

GRB2 Antibody (Y209) is for research use only and not for use in diagnostic or therapeutic procedures.

GRB2 Antibody (Y209) - Protein Information

Name GRB2

Synonyms ASH

Function Adapter protein that provides a critical link between cell surface growth factor receptors and the Ras signaling pathway.

Cellular Location

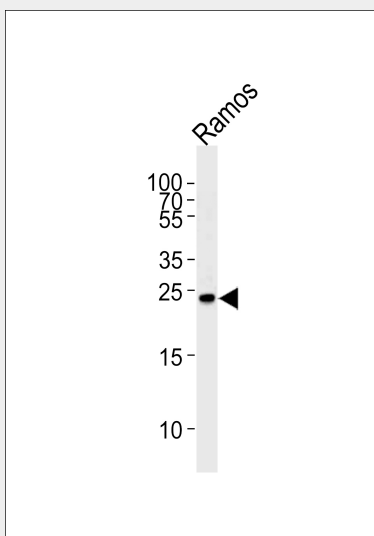
Nucleus. Cytoplasm. Endosome Golgi apparatus {ECO:0000250|UniProtKB:Q60631}

GRB2 Antibody (Y209) - Protocols

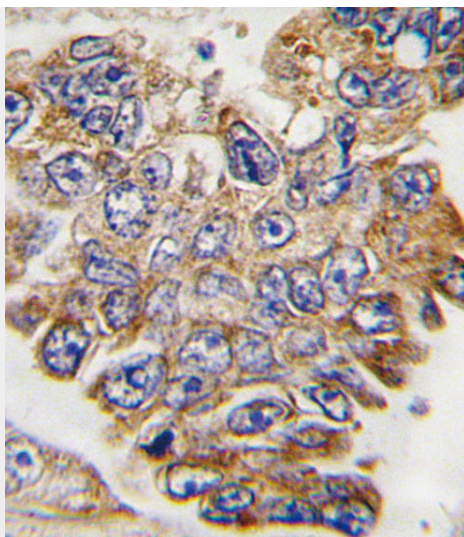
Provided below are standard protocols that you may find useful for product applications.

- [Western Blot](#)
- [Blocking Peptides](#)
- [Dot Blot](#)
- [Immunohistochemistry](#)
- [Immunofluorescence](#)
- [Immunoprecipitation](#)
- [Flow Cytometry](#)
- [Cell Culture](#)

GRB2 Antibody (Y209) - Images



Western blot analysis of lysate from Ramos cell line, using GRB2 Antibody (pY209)(Cat. #AP6283a). AP6283a was diluted at 1:1000. A goat anti-rabbit IgG H&L(HRP) at 1:5000 dilution was used as the secondary antibody. Lysate at 35ug.



Formalin-fixed and paraffin-embedded human lung carcinoma tissue reacted with GRB2 Antibody (Y209), which was peroxidase-conjugated to the secondary antibody, followed by DAB staining. This data demonstrates the use of this antibody for immunohistochemistry; clinical relevance has not been evaluated.

GRB2 Antibody (Y209) - Background

GRB2 binds the epidermal growth factor receptor and contains one SH2 domain and two SH3 domains. Its two SH3 domains direct complex formation with proline-rich regions of other proteins, and its SH2 domain binds tyrosine phosphorylated sequences. This gene is similar to the Sem5 gene of *C.elegans*, which is involved in the signal transduction pathway.

GRB2 Antibody (Y209) - References

Kondo,A., J. Biol. Chem. 283 (3), 1428-1436 (2008) Morimatsu,M., Proc. Natl. Acad. Sci. U.S.A. 104 (46), 18013-18018 (2007) Martinez,N., Cell. Signal. 19 (11), 2277-2285 (2007)