

GRB2 Antibody (Center)
Purified Rabbit Polyclonal Antibody (Pab)
Catalog # AP6283C**Specification**

GRB2 Antibody (Center) - Product Information

Application	WB, IHC-P,E
Primary Accession	P62993
Other Accession	P62994 , Q60631 , Q6GPJ9 , P87379
Reactivity	Human
Predicted	Xenopus, Mouse, Rat
Host	Rabbit
Clonality	Polyclonal
Isotype	Rabbit IgG
Calculated MW	25206
Antigen Region	89-118

GRB2 Antibody (Center) - Additional Information**Gene ID** 2885**Other Names**

Growth factor receptor-bound protein 2, Adapter protein GRB2, Protein Ash, SH2/SH3 adapter
GRB2, GRB2, ASH

Target/Specificity

This GRB2 antibody is generated from rabbits immunized with a KLH conjugated synthetic peptide between 89-118 amino acids from the Central region of human GRB2.

Dilution

WB~~1:1000
IHC-P~~1:50~100

Format

Purified polyclonal antibody supplied in PBS with 0.09% (W/V) sodium azide. This antibody is prepared by Saturated Ammonium Sulfate (SAS) precipitation followed by dialysis against PBS.

Storage

Maintain refrigerated at 2-8°C for up to 2 weeks. For long term storage store at -20°C in small aliquots to prevent freeze-thaw cycles.

Precautions

GRB2 Antibody (Center) is for research use only and not for use in diagnostic or therapeutic procedures.

GRB2 Antibody (Center) - Protein Information**Name** GRB2

Synonyms ASH

Function Adapter protein that provides a critical link between cell surface growth factor receptors and the Ras signaling pathway.

Cellular Location

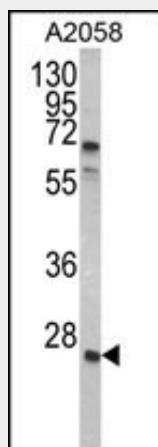
Nucleus. Cytoplasm. Endosome Golgi apparatus {ECO:0000250|UniProtKB:Q60631}

GRB2 Antibody (Center) - Protocols

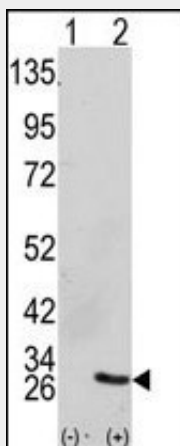
Provided below are standard protocols that you may find useful for product applications.

- [Western Blot](#)
- [Blocking Peptides](#)
- [Dot Blot](#)
- [Immunohistochemistry](#)
- [Immunofluorescence](#)
- [Immunoprecipitation](#)
- [Flow Cytometry](#)
- [Cell Culture](#)

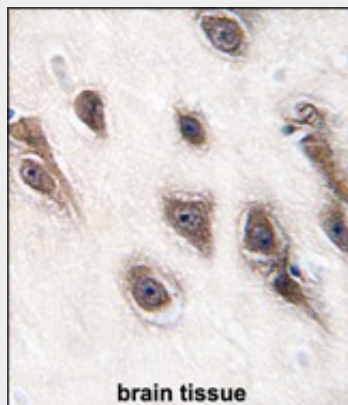
GRB2 Antibody (Center) - Images



Western blot analysis of GRB2 Antibody (Center) (Cat. #AP6283c) in A2058 cell line lysates (35ug/lane). GRB2 (arrow) was detected using the purified Pab.



Western blot analysis of GRB2 (arrow) using GRB2 Antibody (Center) (Cat.#AP6283c). 293 cell lysates (2 ug/lane) either nontransfected (Lane 1) or transiently transfected with the GRB2 gene (Lane 2) (Origene Technologies).



Formalin-fixed and paraffin-embedded human brain tissue reacted with GRB2 antibody (Center), which was peroxidase-conjugated to the secondary antibody, followed by DAB staining. This data demonstrates the use of this antibody for immunohistochemistry; clinical relevance has not been evaluated.

GRB2 Antibody (Center) - Background

GRB2 binds the epidermal growth factor receptor and contains one SH2 domain and two SH3 domains. Its two SH3 domains direct complex formation with proline-rich regions of other proteins, and its SH2 domain binds tyrosine phosphorylated sequences.

GRB2 Antibody (Center) - References

- Kondo,A., J. Biol. Chem. 283 (3), 1428-1436 (2008)
Morimatsu,M., Proc. Natl. Acad. Sci. U.S.A. 104 (46), 18013-18018 (2007)
Martinez,N., Cell. Signal. 19 (11), 2277-2285 (2007)