

**MEF2C Antibody (S387)**  
**Affinity Purified Rabbit Polyclonal Antibody (Pab)**  
**Catalog # AP6285a**

**Specification**

---

**MEF2C Antibody (S387) - Product Information**

Application	IF, WB, IHC-P,E
Primary Accession	<a href="#">Q06413</a>
Other Accession	<a href="#">A4UTP7</a> , <a href="#">A0A096MJY4</a>
Reactivity	Human, Mouse
Predicted	Pig, Rat
Host	Rabbit
Clonality	Polyclonal
Isotype	Rabbit IgG
Antigen Region	365-394

**MEF2C Antibody (S387) - Additional Information**

**Gene ID** 4208

**Other Names**

Myocyte-specific enhancer factor 2C, MEF2C

**Target/Specificity**

This MEF2C antibody is generated from rabbits immunized with a KLH conjugated synthetic peptide between 365-394 amino acids from human MEF2C.

**Dilution**

IF~~1:10~50  
WB~~1:1000-2000  
IHC-P~~1:10~50

**Format**

Purified polyclonal antibody supplied in PBS with 0.09% (W/V) sodium azide. This antibody is purified through a protein A column, followed by peptide affinity purification.

**Storage**

Maintain refrigerated at 2-8°C for up to 2 weeks. For long term storage store at -20°C in small aliquots to prevent freeze-thaw cycles.

**Precautions**

MEF2C Antibody (S387) is for research use only and not for use in diagnostic or therapeutic procedures.

**MEF2C Antibody (S387) - Protein Information**

**Name** MEF2C ([HGNC:6996](#))

**Function** Transcription activator which binds specifically to the MEF2 element present in the regulatory regions of many muscle-specific genes. Controls cardiac morphogenesis and myogenesis, and is also involved in vascular development. Enhances transcriptional activation mediated by SOX18. Plays an essential role in hippocampal-dependent learning and memory by suppressing the number of excitatory synapses and thus regulating basal and evoked synaptic transmission. Crucial for normal neuronal development, distribution, and electrical activity in the neocortex. Necessary for proper development of megakaryocytes and platelets and for bone marrow B-lymphopoiesis. Required for B-cell survival and proliferation in response to BCR stimulation, efficient IgG1 antibody responses to T-cell-dependent antigens and for normal induction of germinal center B-cells. May also be involved in neurogenesis and in the development of cortical architecture (By similarity). Isoforms that lack the repressor domain are more active than isoform 1.

**Cellular Location**

Nucleus {ECO:0000250|UniProtKB:A0A096MJY4}. Cytoplasm, sarcoplasm {ECO:0000250|UniProtKB:A0A096MJY4}

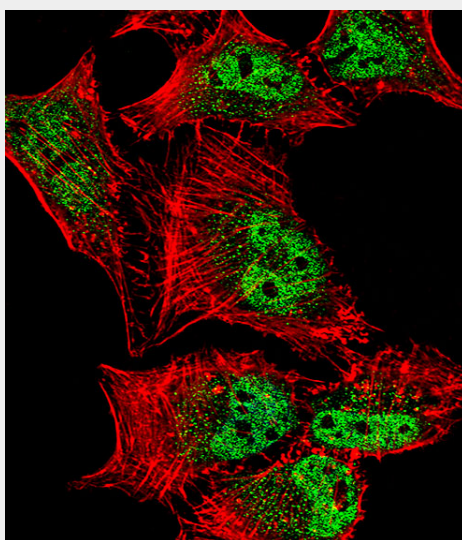
**Tissue Location**

Expressed in brain and skeletal muscle.

**MEF2C Antibody (S387) - Protocols**

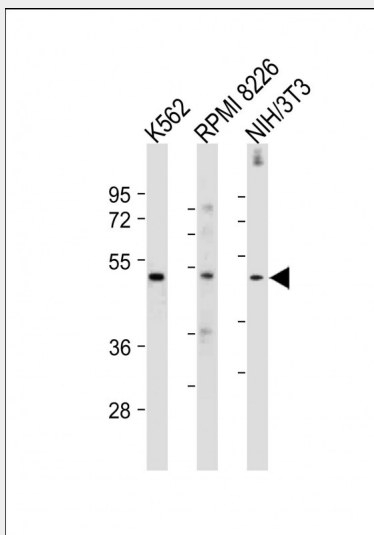
Provided below are standard protocols that you may find useful for product applications.

- [Western Blot](#)
- [Blocking Peptides](#)
- [Dot Blot](#)
- [Immunohistochemistry](#)
- [Immunofluorescence](#)
- [Immunoprecipitation](#)
- [Flow Cytometry](#)
- [Cell Culture](#)

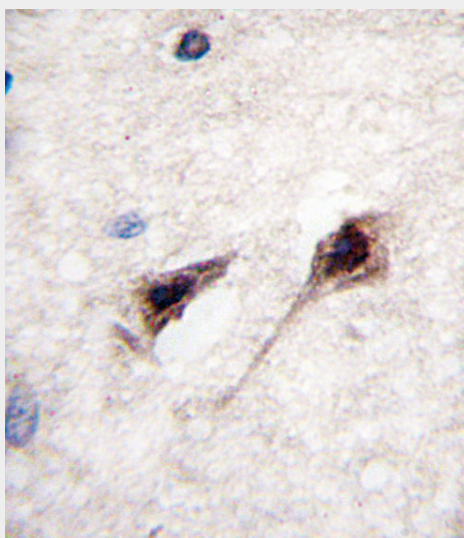
**MEF2C Antibody (S387) - Images**

Fluorescent confocal image of HeLa cell stained with MEF2C Antibody (S387)(Cat#AP6285a). HeLa cells were fixed with 4% PFA (20 min), permeabilized with Triton X-100 (0.1%, 10 min), then

incubated with MEF2C primary antibody (1:25, 1 h at 37°C). For secondary antibody, Alexa Fluor® 488 conjugated donkey anti-rabbit antibody (green) was used (1:400, 50 min at 37°C). Cytoplasmic actin was counterstained with Alexa Fluor® 555 (red) conjugated Phalloidin (7 units/ml, 1 h at 37°C). Nuclei were counterstained with DAPI (blue) (10 µg/ml, 10 min). MEF2C immunoreactivity is localized to vesicles and Nucleus significantly.



All lanes : Anti-MEF2C-pS387. ctrl at 1:1000-2000 dilution Lane 1: K562 whole cell lysate Lane 2: RPMI 8226 whole cell lysate Lane 3: NIH/3T3 whole cell lysate Lysates/proteins at 20 µg per lane. Secondary Goat Anti-Rabbit IgG, (H+L), Peroxidase conjugated at 1/10000 dilution. Predicted band size : 51 kDa Blocking/Dilution buffer: 5% NFDm/TBST.



Formalin-fixed and paraffin-embedded human brain tissue reacted with MEF2C Antibody (S387) (Cat.#AP6285a), which was peroxidase-conjugated to the secondary antibody, followed by DAB staining. This data demonstrates the use of this antibody for immunohistochemistry; clinical relevance has not been evaluated.

### MEF2C Antibody (S387) - Background

MEF2C is a transcription activator which binds specifically to the MEF2 element present in the regulatory regions of many muscle-specific genes. This protein controls cardiac morphogenesis and myogenesis, and is also involved in vascular development. It may also be involved in neurogenesis and in the development of cortical architecture.

**MEF2C Antibody (S387) - References**

Konig, S., et al., J. Biol. Chem. 279(27):28187-28196 (2004). Maeda, T., et al., J. Biol. Chem. 277(50):48889-48898 (2002). Maeda, T., et al., Biochem. Biophys. Res. Commun. 294(4):791-797 (2002). Janson, C.G., et al., Brain Res. Mol. Brain Res. 97(1):70-82 (2001). Krainc, D., et al., Genomics 29(3):809-811 (1995).