

**Parp6 Antibody (C-term 503)**  
**Purified Rabbit Polyclonal Antibody (Pab)**  
**Catalog # AP6286b****Specification**

---

**Parp6 Antibody (C-term 503) - Product Information**

Application	WB,E
Primary Accession	<a href="#">Q2NL67</a>
Other Accession	<a href="#">Q6P6P7</a>
Reactivity	Human
Predicted	Mouse
Host	Rabbit
Clonality	Polyclonal
Isotype	Rabbit IgG
Calculated MW	71115
Antigen Region	508-538

**Parp6 Antibody (C-term 503) - Additional Information****Gene ID** 56965**Other Names**

Poly [ADP-ribose] polymerase 6, PARP-6, ADP-ribosyltransferase diphtheria toxin-like 17, ARTD17, PARP6

**Target/Specificity**

This Parp6 antibody is generated from rabbits immunized with a KLH conjugated synthetic peptide between 508-538 amino acids from the C-terminal region of human Parp6.

**Dilution**

WB~~1:1000

**Format**

Purified polyclonal antibody supplied in PBS with 0.09% (W/V) sodium azide. This antibody is prepared by Saturated Ammonium Sulfate (SAS) precipitation followed by dialysis against PBS.

**Storage**

Maintain refrigerated at 2-8°C for up to 2 weeks. For long term storage store at -20°C in small aliquots to prevent freeze-thaw cycles.

**Precautions**

Parp6 Antibody (C-term 503) is for research use only and not for use in diagnostic or therapeutic procedures.

**Parp6 Antibody (C-term 503) - Protein Information****Name** PARP6 ([HGNC:26921](#))

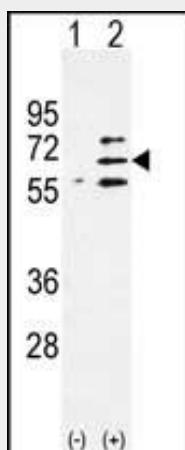
**Function** Mono-ADP-ribosyltransferase that mediates mono-ADP- ribosylation of target proteins.

### Parp6 Antibody (C-term 503) - Protocols

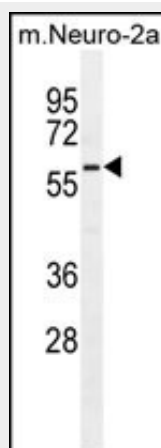
Provided below are standard protocols that you may find useful for product applications.

- [Western Blot](#)
- [Blocking Peptides](#)
- [Dot Blot](#)
- [Immunohistochemistry](#)
- [Immunofluorescence](#)
- [Immunoprecipitation](#)
- [Flow Cytometry](#)
- [Cell Culture](#)

### Parp6 Antibody (C-term 503) - Images



Western blot analysis of Parp6 (arrow) using rabbit polyclonal Parp6 Antibody (C-term) (Cat. #AP6286b). 293 cell lysates (2 ug/lane) either nontransfected (Lane 1) or transiently transfected (Lane 2) with the Parp6 gene.



Parp6 Antibody (C-term) (Cat. #AP6286b) western blot analysis in mouse Neuro-2a cell line lysates (35ug/lane). This demonstrates the Parp6 antibody detected the Parp6 protein (arrow).

### Parp6 Antibody (C-term 503) - Background

Poly(ADP-ribosyl)ation is an immediate DNA-damage-dependent post-translational modification of histones and other nuclear proteins that contributes to the survival of injured proliferating cells. Poly(ADP-ribose) polymerases (PARPs) now constitute a large family of 18 proteins, encoded by different genes and displaying a conserved catalytic domain in which PARP-1 (113 kDa), the founding member, and PARP-2 (62 kDa) are so far the sole enzymes whose catalytic activity has been shown to be immediately stimulated by DNA strand breaks. A large repertoire of sequences encoding novel PARPs now extends considerably the field of poly(ADP-ribosyl)ation reactions to various aspects of the cell biology including cell proliferation and cell death. Some of these new members interact with each other, share common partners and common subcellular localizations suggesting possible fine tuning in the regulation of this post-translational modification of proteins.

#### **Parp6 Antibody (C-term 503) - References**

Ame,J.C., Bioessays 26 (8), 882-893 (2004)