

**PARP3 Antibody (C-term)**  
**Purified Rabbit Polyclonal Antibody (Pab)**  
**Catalog # AP6296b**

**Specification**

---

**PARP3 Antibody (C-term) - Product Information**

Application	WB,E
Primary Accession	<a href="#">Q8CFB8</a>
Reactivity	Mouse
Host	Rabbit
Clonality	Polyclonal
Isotype	Rabbit IgG
Antigen Region	451-481

**PARP3 Antibody (C-term) - Additional Information**

**Other Names**

NAD+ ADP-ribosyltransferase 3 PARP-3; NOD-derived CD11c +ve dendritic cells cDNA, RIKEN full-length enriched library, clone:F630107G12 product:ADP-ribosyltransferase (NAD+; poly (ADP-ribose polymerase)-like 3, full insert sequence); Parp3; AdprtI3

**Target/Specificity**

This PARP3 antibody is generated from rabbits immunized with a KLH conjugated synthetic peptide between 451-481 amino acids of mouse PARP3.

**Dilution**

WB~~1:1000

**Format**

Purified polyclonal antibody supplied in PBS with 0.09% (W/V) sodium azide. This antibody is prepared by Saturated Ammonium Sulfate (SAS) precipitation followed by dialysis against PBS.

**Storage**

Maintain refrigerated at 2-8°C for up to 2 weeks. For long term storage store at -20°C in small aliquots to prevent freeze-thaw cycles.

**Precautions**

PARP3 Antibody (C-term) is for research use only and not for use in diagnostic or therapeutic procedures.

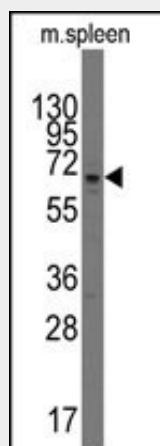
**PARP3 Antibody (C-term) - Protein Information**

**PARP3 Antibody (C-term) - Protocols**

Provided below are standard protocols that you may find useful for product applications.

- [Western Blot](#)
- [Blocking Peptides](#)
- [Dot Blot](#)
- [Immunohistochemistry](#)
- [Immunofluorescence](#)
- [Immunoprecipitation](#)
- [Flow Cytometry](#)
- [Cell Culture](#)

#### **PARP3 Antibody (C-term) - Images**



Western blot analysis of anti-PARP3 Pab (Cat.#AP6296b) in mouse spleen tissue lysates (35ug/lane). PARP3 (arrow) was detected using the purified Pab.

#### **PARP3 Antibody (C-term) - Background**

PARP3, poly(ADP-ribosyl)transferase 3, belongs to the PARP family. These enzymes modify nuclear proteins by poly-ADP-ribosylation, which is required for DNA repair, regulation of apoptosis, and maintenance of genomic stability. This protein is preferentially localized to the daughter centriole throughout the cell cycle.

#### **PARP3 Antibody (C-term) - References**

Urbanek, P., Folia Biol. (Praha) 48 (5), 182-191 (2002)