

**PXN Antibody (Y118)**  
**Affinity Purified Rabbit Polyclonal Antibody (Pab)**  
**Catalog # AP6408d**

## Specification

---

### PXN Antibody (Y118) - Product Information

Application	WB, IHC-P,E
Primary Accession	<a href="#">P49023</a>
Reactivity	Human
Host	Rabbit
Clonality	Polyclonal
Isotype	Rabbit IgG
Calculated MW	64505
Antigen Region	94-125

### PXN Antibody (Y118) - Additional Information

**Gene ID** 5829

#### Other Names

Paxillin, PXN

#### Target/Specificity

This PXN antibody is generated from rabbits immunized with a KLH conjugated synthetic peptide between 94-125 amino acids from human PXN.

#### Dilution

WB~~1:1000

IHC-P~~1:10~50

#### Format

Purified polyclonal antibody supplied in PBS with 0.09% (W/V) sodium azide. This antibody is purified through a protein A column, followed by peptide affinity purification.

#### Storage

Maintain refrigerated at 2-8°C for up to 2 weeks. For long term storage store at -20°C in small aliquots to prevent freeze-thaw cycles.

#### Precautions

PXN Antibody (Y118) is for research use only and not for use in diagnostic or therapeutic procedures.

### PXN Antibody (Y118) - Protein Information

#### Name PXN

**Function** Cytoskeletal protein involved in actin-membrane attachment at sites of cell adhesion to the extracellular matrix (focal adhesion). Recruits other proteins such as TRIM15 to focal adhesion.

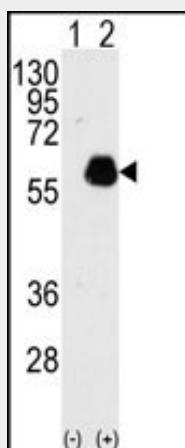
**Cellular Location**

Cytoplasm, cytoskeleton. Cell junction, focal adhesion. Cytoplasm, cell cortex  
{ECO:0000250|UniProtKB:Q8VI36}. Note=Colocalizes with integrins at the cell periphery.  
Colocalize with PXN to membrane ruffles and the leading edge of migrating cells  
(PubMed:23128389). {ECO:0000250, ECO:0000269|PubMed:23128389}

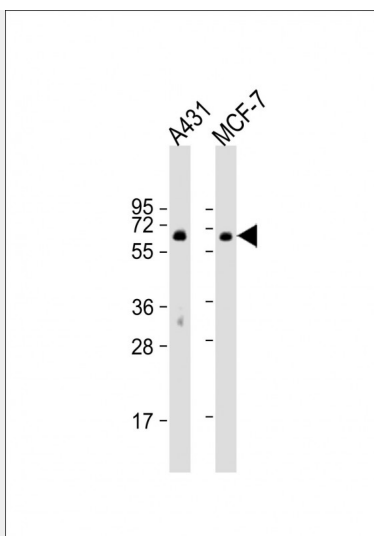
**PXN Antibody (Y118) - Protocols**

Provided below are standard protocols that you may find useful for product applications.

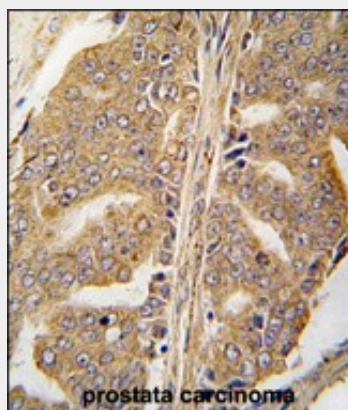
- [Western Blot](#)
- [Blocking Peptides](#)
- [Dot Blot](#)
- [Immunohistochemistry](#)
- [Immunofluorescence](#)
- [Immunoprecipitation](#)
- [Flow Cytometry](#)
- [Cell Culture](#)

**PXN Antibody (Y118) - Images**

Western blot analysis of PXN (arrow) using rabbit polyclonal PXN Antibody (Y118) (Cat.#AP6408d). 293 cell lysates (2 ug/lane) either nontransfected (Lane 1) or transiently transfected with PXN gene (Lane 2) (Origene Technologies).



All lanes : Anti-PXN Antibody (Y118) at 1:1000 dilution Lane 1: A431 whole cell lysate Lane 2: MCF-7 whole cell lysate Lysates/proteins at 20 µg per lane. Secondary Goat Anti-Rabbit IgG, (H+L), Peroxidase conjugated at 1/10000 dilution. Predicted band size : 65 kDa Blocking/Dilution buffer: 5% NFDM/TBST.



Formalin-fixed and paraffin-embedded human prostate carcinoma tissue reacted with PXN Antibody (Y118) (Cat.#AP6408d), which was peroxidase-conjugated to the secondary antibody, followed by DAB staining. This data demonstrates the use of this antibody for immunohistochemistry; clinical relevance has not been evaluated.

### PXN Antibody (Y118) - Background

PXN is a cytoskeletal adapter protein involved in organisation and function of focal adhesions, which are critical to cell adhesion and migration. This in turn plays a role in a wide variety of processes including embryogenesis, organogenesis, wound repair, inflammation and cancer. PXN contains LD motifs, LIM domains, SH3 and SH2 binding domains that serve as docking sites for cytoskeletal proteins, tyrosine kinases (e.g., FAK, Pyk 2, Src), serine/threonine kinases, GTPase activating proteins and other adaptor proteins (e.g., Actin, Vinculin, Crk).