

**ANGPTL7 Antibody (N-term)**  
**Purified Rabbit Polyclonal Antibody (Pab)**  
**Catalog # AP6535a****Specification**

---

**ANGPTL7 Antibody (N-term) - Product Information**

Application	WB,E
Primary Accession	<a href="#">O43827</a>
Reactivity	Human
Host	Rabbit
Clonality	Polyclonal
Isotype	Rabbit IgG
Calculated MW	40018
Antigen Region	74-104

**ANGPTL7 Antibody (N-term) - Additional Information****Gene ID** 10218**Other Names**

Angiopoietin-related protein 7, Angiopoietin-like factor, Angiopoietin-like protein 7, Cornea-derived transcript 6 protein, ANGPTL7, CDT6

**Target/Specificity**

This ANGPTL7 antibody is generated from rabbits immunized with a KLH conjugated synthetic peptide between 74-104 amino acids from the N-terminal region of human ANGPTL7.

**Dilution**

WB~~1:1000

**Format**

Purified polyclonal antibody supplied in PBS with 0.09% (W/V) sodium azide. This antibody is prepared by Saturated Ammonium Sulfate (SAS) precipitation followed by dialysis against PBS.

**Storage**

Maintain refrigerated at 2-8°C for up to 2 weeks. For long term storage store at -20°C in small aliquots to prevent freeze-thaw cycles.

**Precautions**

ANGPTL7 Antibody (N-term) is for research use only and not for use in diagnostic or therapeutic procedures.

**ANGPTL7 Antibody (N-term) - Protein Information****Name** ANGPTL7**Synonyms** CDT6

**Function** Has a role in the formation and organization of the extracellular matrix. In the eye, it functions as a mediator of dexamethasone-induced matrix deposition in the trabecular meshwork, the tissue responsible for the outflow of the ocular aqueous humor and for the maintenance of intraocular pressure (PubMed:[21199193](#)). Is a negative regulator of angiogenesis in the cornea, and plays a major role in maintaining corneal avascularity and transparency (PubMed:[25622036](#)).

#### Cellular Location

Secreted.

#### Tissue Location

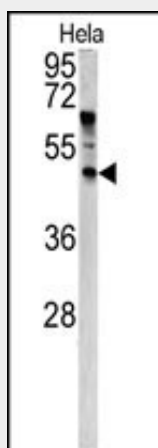
Highly expressed in the cornea (at protein level) (PubMed:11682471). Expression is restricted to the stromal layer (PubMed:11682471). Also detected at the junction between the corneal stromal layer and the conjunctiva. Not detected in the sclera (PubMed:11682471).

### ANGPTL7 Antibody (N-term) - Protocols

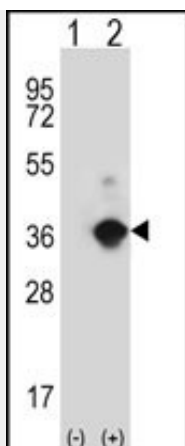
Provided below are standard protocols that you may find useful for product applications.

- [Western Blot](#)
- [Blocking Peptides](#)
- [Dot Blot](#)
- [Immunohistochemistry](#)
- [Immunofluorescence](#)
- [Immunoprecipitation](#)
- [Flow Cytometry](#)
- [Cell Culture](#)

### ANGPTL7 Antibody (N-term) - Images



Western blot analysis of ANGPTL7 antibody (N-term) (Cat.# AP6535a) in HeLa cell line lysates (35ug/lane). ANGPTL7 (arrow) was detected using the purified Pab.



Western blot analysis of ANGPTL7 (arrow) using rabbit polyclonal ANGPTL7 Antibody (N-term) (Cat.# AP6535a). 293 cell lysates (2 ug/lane) either nontransfected (Lane 1) or transiently transfected (Lane 2) with the ANGPTL7 gene.

#### **ANGPTL7 Antibody (N-term) - References**

Kuchtey,J., Invest. Ophthalmol. Vis. Sci. 49 (8), 3438-3448 (2008)