

**DNAJC19 Antibody (Center)**  
**Purified Rabbit Polyclonal Antibody (Pab)**  
**Catalog # AP6542c****Specification**

---

**DNAJC19 Antibody (Center) - Product Information**

Application	WB,E
Primary Accession	<a href="#">Q96DA6</a>
Other Accession	<a href="#">Q9CQV7</a>
Reactivity	Human, Mouse
Host	Rabbit
Clonality	Polyclonal
Isotype	Rabbit IgG
Calculated MW	12499
Antigen Region	55-84

**DNAJC19 Antibody (Center) - Additional Information****Gene ID** 131118**Other Names**

Mitochondrial import inner membrane translocase subunit TIM14, DnaJ homolog subfamily C member 19, DNAJC19, TIM14, TIMM14

**Target/Specificity**

This DNAJC19 antibody is generated from rabbits immunized with a KLH conjugated synthetic peptide between 55-84 amino acids from the Central region of human DNAJC19.

**Dilution**

WB~~1:1000

**Format**

Purified polyclonal antibody supplied in PBS with 0.09% (W/V) sodium azide. This antibody is prepared by Saturated Ammonium Sulfate (SAS) precipitation followed by dialysis against PBS.

**Storage**

Maintain refrigerated at 2-8°C for up to 2 weeks. For long term storage store at -20°C in small aliquots to prevent freeze-thaw cycles.

**Precautions**

DNAJC19 Antibody (Center) is for research use only and not for use in diagnostic or therapeutic procedures.

**DNAJC19 Antibody (Center) - Protein Information****Name** DNAJC19**Synonyms** TIM14, TIMM14

**Function** Mitochondrial co-chaperone which forms a complex with prohibitins to regulate cardiolipin remodeling (By similarity). May be a component of the PAM complex, a complex required for the translocation of transit peptide-containing proteins from the inner membrane into the mitochondrial matrix in an ATP-dependent manner. May act as a co-chaperone that stimulate the ATP-dependent activity (By similarity).

**Cellular Location**

Mitochondrion inner membrane; Single-pass membrane protein; Matrix side  
{ECO:0000250|UniProtKB:Q9CQV7}

**Tissue Location**

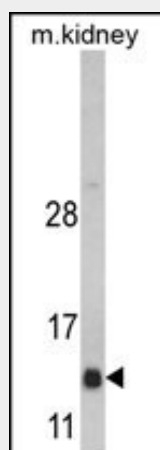
Ubiquitously expressed.

**DNAJC19 Antibody (Center) - Protocols**

Provided below are standard protocols that you may find useful for product applications.

- [Western Blot](#)
- [Blocking Peptides](#)
- [Dot Blot](#)
- [Immunohistochemistry](#)
- [Immunofluorescence](#)
- [Immunoprecipitation](#)
- [Flow Cytometry](#)
- [Cell Culture](#)

**DNAJC19 Antibody (Center) - Images**



Western blot analysis of DNAJC19 Antibody (Center) (Cat. #AP6542c) in mouse kidney tissue lysates (35ug/lane). DNAJC19 (arrow) was detected using the purified Pab.

**DNAJC19 Antibody (Center) - Background**

DNAJC19 is a probable component of the PAM complex, a complex required for the translocation of transit peptide-containing proteins from the inner membrane into the mitochondrial matrix in an ATP-dependent manner. The protein may act as a co-chaperone that stimulate the ATP-dependent activity.

**DNAJC19 Antibody (Center) - References**

Sparkes,R., Cardiol Young 17 (2), 215-217 (2007)  
Davey,K.M., J. Med. Genet. 43 (5), 385-393 (2006)  
Mokranjac,D., EMBO J. 22 (19), 4945-4956 (2003)