

CPZ Antibody (N-term)
Purified Rabbit Polyclonal Antibody (Pab)
Catalog # AP6546a**Specification**

CPZ Antibody (N-term) - Product Information

Application	WB, IHC-P,E
Primary Accession	Q66K79
Reactivity	Human
Host	Rabbit
Clonality	Polyclonal
Isotype	Rabbit IgG
Calculated MW	73655
Antigen Region	143-172

CPZ Antibody (N-term) - Additional Information**Gene ID** 8532**Other Names**

Carboxypeptidase Z, CPZ, 3417-, CPZ

Target/Specificity

This CPZ antibody is generated from rabbits immunized with a KLH conjugated synthetic peptide between 143-172 amino acids from the N-terminal region of human CPZ.

Dilution

WB~~1:1000

IHC-P~~1:50~100

Format

Purified polyclonal antibody supplied in PBS with 0.09% (W/V) sodium azide. This antibody is prepared by Saturated Ammonium Sulfate (SAS) precipitation followed by dialysis against PBS.

Storage

Maintain refrigerated at 2-8°C for up to 2 weeks. For long term storage store at -20°C in small aliquots to prevent freeze-thaw cycles.

Precautions

CPZ Antibody (N-term) is for research use only and not for use in diagnostic or therapeutic procedures.

CPZ Antibody (N-term) - Protein Information**Name** CPZ

Function Cleaves substrates with C-terminal arginine residues. Probably modulates the Wnt signaling pathway, by cleaving some undefined protein. May play a role in cleavage during

prohormone processing.

Cellular Location

Secreted, extracellular space, extracellular matrix

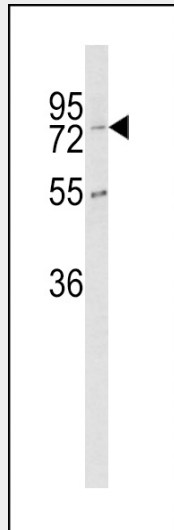
Tissue Location

In placenta, it is present within invasive trophoblasts and in the surrounding extracellular space. Also present in amnion cells, but is not readily apparent in the extracellular matrix of this cell type. Present in normal pituitary gland and neoplastic pituitary gland (especially POMC-, GH- and PRL-producing adenomas) (at protein level). Widely expressed

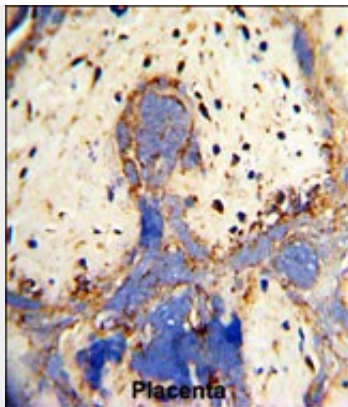
CPZ Antibody (N-term) - Protocols

Provided below are standard protocols that you may find useful for product applications.

- [Western Blot](#)
- [Blocking Peptides](#)
- [Dot Blot](#)
- [Immunohistochemistry](#)
- [Immunofluorescence](#)
- [Immunoprecipitation](#)
- [Flow Cytometry](#)
- [Cell Culture](#)

CPZ Antibody (N-term) - Images

Western blot analysis of CPZ Antibody (N-term) (Cat.# AP6546a) in K562 cell line lysates (35ug/lane). CPZ (arrow) was detected using the purified Pab.



Formalin-fixed and paraffin-embedded human placenta with CPZ Antibody (N-term), which was peroxidase-conjugated to the secondary antibody, followed by DAB staining. This data demonstrates the use of this antibody for immunohistochemistry; clinical relevance has not been evaluated.

CPZ Antibody (N-term) - Background

CPZ is a member of the metallocarboxypeptidase family. This enzyme displays carboxypeptidase activity towards substrates with basic C-terminal residues. It is most active at neutral pH and is inhibited by active site-directed inhibitors of metallocarboxypeptidases.

CPZ Antibody (N-term) - References

Fan,X., J. Histochem. Cytochem. 50 (11), 1509-1516 (2002)
Reznik,S.E., Cell. Mol. Life Sci. 58 (12-13), 1790-1804 (2001)