

**GNS Antibody (Center S298)**  
**Purified Rabbit Polyclonal Antibody (Pab)**  
**Catalog # AP6574b****Specification**

---

**GNS Antibody (Center S298) - Product Information**

Application	WB, IHC-P, FC,E
Primary Accession	<a href="#">P15586</a>
Reactivity	Human
Host	Rabbit
Clonality	Polyclonal
Isotype	Rabbit IgG
Calculated MW	62082
Antigen Region	283-313

**GNS Antibody (Center S298) - Additional Information****Gene ID** 2799**Other Names**

N-acetylglucosamine-6-sulfatase, Glucosamine-6-sulfatase, G6S, GNS

**Target/Specificity**

This GNS antibody is generated from rabbits immunized with a KLH conjugated synthetic peptide between 283-313 amino acids from the Central region of human GNS.

**Dilution**

WB~~1:1000  
IHC-P~~1:50~100  
FC~~1:10~50

**Format**

Purified polyclonal antibody supplied in PBS with 0.09% (W/V) sodium azide. This antibody is prepared by Saturated Ammonium Sulfate (SAS) precipitation followed by dialysis against PBS.

**Storage**

Maintain refrigerated at 2-8°C for up to 2 weeks. For long term storage store at -20°C in small aliquots to prevent freeze-thaw cycles.

**Precautions**

GNS Antibody (Center S298) is for research use only and not for use in diagnostic or therapeutic procedures.

**GNS Antibody (Center S298) - Protein Information****Name** GNS**Cellular Location**

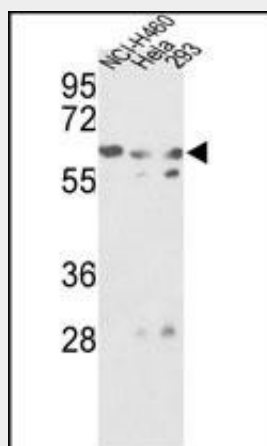
Lysosome.

### GNS Antibody (Center S298) - Protocols

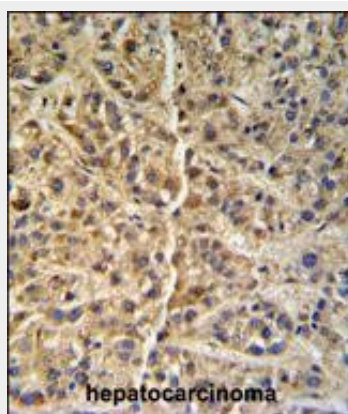
Provided below are standard protocols that you may find useful for product applications.

- [Western Blot](#)
- [Blocking Peptides](#)
- [Dot Blot](#)
- [Immunohistochemistry](#)
- [Immunofluorescence](#)
- [Immunoprecipitation](#)
- [Flow Cytometry](#)
- [Cell Culture](#)

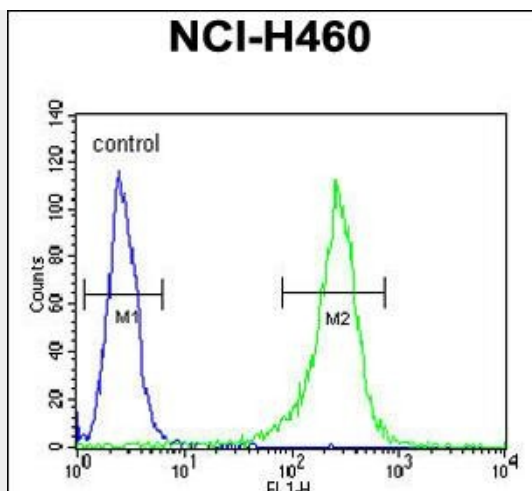
### GNS Antibody (Center S298) - Images



Western blot analysis of GNS Antibody (Center S298) (Cat. #AP6574b) in NCI-H460, Hela, 293 cell line lysates (35ug/lane). GNS (arrow) was detected using the purified Pab.



GNS Antibody (Center S298) (Cat. #AP6574b) IHC analysis in formalin fixed and paraffin embedded human hepatocarcinoma followed by peroxidase conjugation of the secondary antibody and DAB staining. This data demonstrates the use of the GNS Antibody (Center S298) for immunohistochemistry. Clinical relevance has not been evaluated.



GNS Antibody (Center S298) (Cat. #AP6574b) flow cytometric analysis of NCI-H460 cells (right histogram) compared to a negative control cell (left histogram). FITC-conjugated goat-anti-rabbit secondary antibodies were used for the analysis.

#### **GNS Antibody (Center S298) - Background**

GNS is a lysosomal enzyme found in all cells. It is involved in the catabolism of heparin, heparan sulphate, and keratan sulphate. Deficiency of this enzyme results in the accumulation of undegraded substrate and the lysosomal storage disorder mucopolysaccharidosis type IIID (Sanfilippo D syndrome). Mucopolysaccharidosis type IIID is the least common of the four subtypes of Sanfilippo syndrome.

#### **GNS Antibody (Center S298) - References**

Zhang, H., Li, X. J., Nat. Biotechnol. 21 (6), 660-666 (2003)