

ARPC3 Antibody (C-term)
Purified Rabbit Polyclonal Antibody (Pab)
Catalog # AP6601b**Specification**

ARPC3 Antibody (C-term) - Product Information

Application	WB, IHC-P,E
Primary Accession	O15145
Other Accession	Q3T035
Reactivity	Human
Predicted	Bovine
Host	Rabbit
Clonality	Polyclonal
Isotype	Rabbit IgG
Calculated MW	20547
Antigen Region	131-158

ARPC3 Antibody (C-term) - Additional Information**Gene ID** 10094**Other Names**

Actin-related protein 2/3 complex subunit 3, Arp2/3 complex 21 kDa subunit, p21-ARC, ARPC3, ARC21

Target/Specificity

This ARPC3 antibody is generated from rabbits immunized with a KLH conjugated synthetic peptide between 131-158 amino acids from the C-terminal region of human ARPC3.

DilutionWB~~1:1000
IHC-P~~1:50~100**Format**

Purified polyclonal antibody supplied in PBS with 0.09% (W/V) sodium azide. This antibody is prepared by Saturated Ammonium Sulfate (SAS) precipitation followed by dialysis against PBS.

Storage

Maintain refrigerated at 2-8°C for up to 2 weeks. For long term storage store at -20°C in small aliquots to prevent freeze-thaw cycles.

Precautions

ARPC3 Antibody (C-term) is for research use only and not for use in diagnostic or therapeutic procedures.

ARPC3 Antibody (C-term) - Protein Information**Name** ARPC3

Synonyms ARC21

Function Component of the Arp2/3 complex, a multiprotein complex that mediates actin polymerization upon stimulation by nucleation-promoting factor (NPF) (PubMed:[9230079](#)). The Arp2/3 complex mediates the formation of branched actin networks in the cytoplasm, providing the force for cell motility (PubMed:[9230079](#)). In addition to its role in the cytoplasmic cytoskeleton, the Arp2/3 complex also promotes actin polymerization in the nucleus, thereby regulating gene transcription and repair of damaged DNA (PubMed:[29925947](#)). The Arp2/3 complex promotes homologous recombination (HR) repair in response to DNA damage by promoting nuclear actin polymerization, leading to drive motility of double-strand breaks (DSBs) (PubMed:[29925947](#)).

Cellular Location

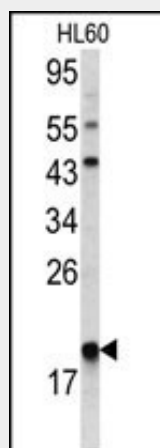
Cytoplasm, cytoskeleton. Cell projection Nucleus

ARPC3 Antibody (C-term) - Protocols

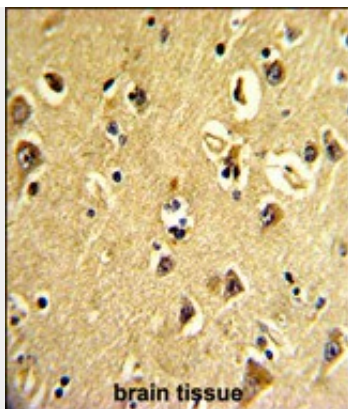
Provided below are standard protocols that you may find useful for product applications.

- [Western Blot](#)
- [Blocking Peptides](#)
- [Dot Blot](#)
- [Immunohistochemistry](#)
- [Immunofluorescence](#)
- [Immunoprecipitation](#)
- [Flow Cytometry](#)
- [Cell Culture](#)

ARPC3 Antibody (C-term) - Images



Western blot analysis of ARPC3 antibody (C-term) (Cat. #AP6601b) in HL60 cell line lysates(35ug/lane). ARPC3 (arrow) was detected using the purified Pab.



Formalin-fixed and paraffin-embedded human brain tissue reacted with ARPC3 Antibody (C-term), which was peroxidase-conjugated to the secondary antibody, followed by DAB staining. This data demonstrates the use of this antibody for immunohistochemistry; clinical relevance has not been evaluated.

ARPC3 Antibody (C-term) - Background

ARPC3 is one of seven subunits of the human Arp2/3 protein complex. The Arp2/3 protein complex has been implicated in the control of actin polymerization in cells and has been conserved through evolution. The exact role of the protein, the p21 subunit, has yet to be determined.

ARPC3 Antibody (C-term) - References

Dubois,T., Nat. Cell Biol. 7 (4), 353-364 (2005)